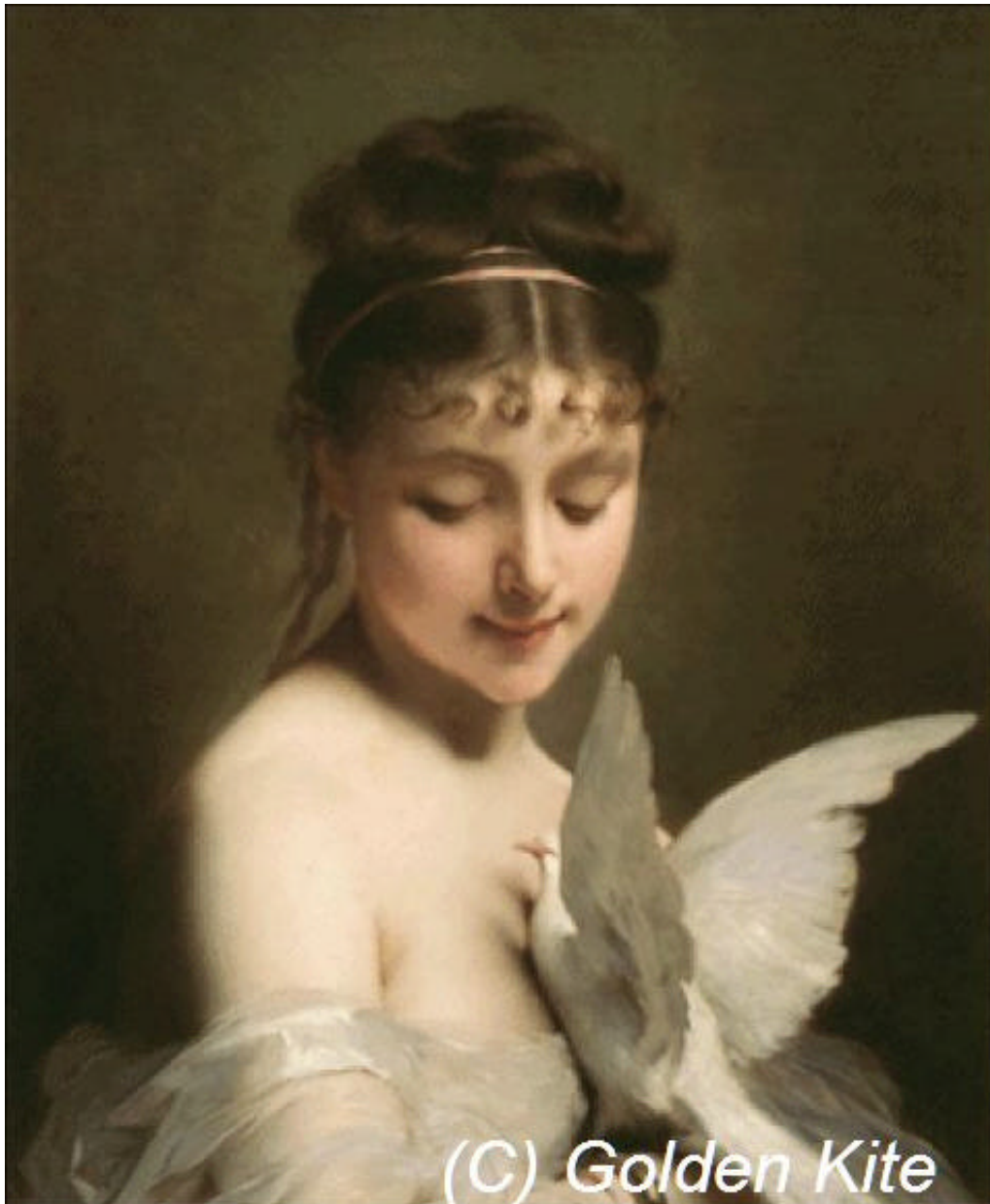


1129 Young Woman with a Dove



This pattern may not be copied, sold or in any other way handled in any way that violates the international copyright laws. If you get hold of this pattern (and or this document) in any other way than via a direct download from www.goldenkite.com or via a mail from us, you should report that to us at legal_actions@goldenkite.com .

Copyright (c) 2007-, Golden Kite. All rights reserved.

Instructions

Thank you for choosing Golden Kite products!
We hope you will have lots of fun with this cross-stitch pattern!

Fabric

Press the fabric with an iron if needed. A good thing to prevent the fabric from fraying is to machine zigzag the edges.

On large patterns, it is easiest to start from the upper left corner of the design. Make sure you have the proper margins before starting and that the fabric piece is of the correct size. The best way to verify this is to count all stitch positions on the fabric from the upper left corner downwards and to the right to make sure there is enough space for the design.

Some prefer to start in the center of the design instead. To locate the center of the fabric, fold the fabric in half both vertically and horizontally. The center is located where these two folds meet.

Stitches

Each length of DMC tread consists of six strands.
Use two of these strands for all stitches.

Note that some colors may be mixes (or blends) between two different pure colors. In that case take one strand of the two colors each and thread the two strands into the needle at the same time for stitching.

All stitches are full cross-stitches. No half-stitching and no back-stitching is necessary in this pattern.

All cross-stitches will be worked into the holes in the fabric from left to right. Always use the larger holes in the fabric for the stitches. Adjacent stitches should meet in the same hole. Make sure all stitches cross in the same direction.

Please be careful when washing the finished embroidery! The cotton thread may bleed when washed. Only hand wash it in lukewarm water. Remove excess water by roll it in a towel and lay it flat to air dry. Natural fabrics may shrink slightly when washed. We do not recommend washing the embroidery if not absolutely necessary and we take no responsibility for any damage that may occur.

When you start using this product you agree that Golden Kite (Golden K), or any people working for or in association with Golden Kite (Golden K), cannot be set responsible for any physical, mental, economical or other type of damage caused by this product (including this document, pattern, threads, needles and any other parts received by you from Golden Kite (Golden K)).

This pattern may not be copied, sold or in any other way handled in any way that violates the international copyright laws. If you get hold of this pattern (and or this document) in any other way than via a direct download from www.goldenkite.com or via a mail from us, you should report that to us at legal_actions@goldenkite.com .

Young Woman with a Dove

Stitch Count	
Horizontal:	300
Vertical:	363

Recommended Fabric Color
Antique White

This table tells the size of the pattern (without any margins) and the size of the fabric required to stitch the pattern (including recommended margins). 3 inch margins have been added on each side in the 'Including Margins' row.

The sizes are given for 14, 16 and 18 stitches per inch fabrics.

Make sure to use the 'Including Margins' row when cutting the piece of fabric to be used. Also make sure that 3 inch margins are enough for your stitching technique and add more margin areas if necessary.

	14				16				18			
	Width		Height		Width		Height		Width		Height	
	cm	inch	cm	inch	cm	inch	cm	inch	cm	inch	cm	inch
Pattern:	55	21.37	66	25.87	48	18.7	58	22.64	43	16.625	52	20.125
Including Margins:	71	28	82	32	64	25	74	29	59	23	68	27
	10				12				24			
	Width		Height		Width		Height		Width		Height	
	cm	inch	cm	inch	cm	inch	cm	inch	cm	inch	cm	inch
Pattern:	77	29.91	92	36.21	64	24.93	77	30.18	32	12.46	38	15.09
Including Margins:	93	36	108	43	80	31	93	37	48	19	54	22
	25				26				27			
	Width		Height		Width		Height		Width		Height	
	cm	inch	cm	inch	cm	inch	cm	inch	cm	inch	cm	inch
Pattern:	30	11.96	36	14.48	29	11.5	35	13.93	28	11.08	34	13.41
Including Margins:	46	18	52	21	45	18	51	20	44	18	50	20
	28				30				32			
	Width		Height		Width		Height		Width		Height	
	cm	inch	cm	inch	cm	inch	cm	inch	cm	inch	cm	inch
Pattern:	27	10.68	33	12.93	25	9.97	30	12.07	24	9.34	28	11.31
Including Margins:	43	17	49	19	41	16	46	19	40	16	44	18

Solid Color Stitches. Use two strands of the specified color for these stitches.		
Symbol	DMC	Name
◁	372	Mustard-LT
✂	407	Desert Sand-DK
5	453	Shell Gray-LT
■	500	Blue Green-VY DK
н	524	Fern Green-VY LT
♡	543	Beige Brown-UL VY LT
♠	610	Drab Brown-DK
◇	612	Drab Brown-LT
∪	613	Drab Brown-VY LT
+	632	Desert Sand-UL VY DK
L	640	Beige Gray-VY DK
\$	642	Beige Gray-DK
√	644	Beige Gray-MD
☾	645	Beaver Gray-VY DK
☼	646	Beaver Gray-DK
≡	647	Beaver Gray-MD
::	648	Beaver Gray-LT
· ·	738	Tan-VY LT
	739	Tan-UL VY LT
+	754	Peach-LT
⊕	758	Terra Cotta-VY LT
(822	Beige Gray-LT
●	839	Beige Brown-DK
✱	840	Beige Brown-MD
⇒	841	Beige Brown-LT

◀◀	842	Beige Brown-VY LT
♠	844	Beaver Brown-UL DK
■	934	Black Avocado Green
9	945	Tawny
◊	948	Peach-VY LT
e	950	Desert Sand-LT
∞	951	Tawny-LT
☞	3021	Brown Gray-VY DK
◀	3022	Brown Gray-MD
◁	3023	Brown Gray-LT
③	3031	Mocha Brown-VY DK
☼	3032	Mocha Brown-MD
)	3033	Mocha Brown-VY LT
田	3053	Green Gray
⊕	3064	Desert Sand
1	3770	Tawny-VY LT
♠	3772	Desert Sand-VY DK
•	3774	Desert Sand-VY LT
☼	3779	Terra Cotta-UL VY LT
✱	3781	Mocha Brown-DK
∪	3782	Mocha Brown-LT
✱	3787	Brown Gray-DK
✱	3790	Beige Gray-UL DK
≡	3862	Mocha Beige-DK
☞	3863	Mocha Beige-MD
✱	3864	Mocha Beige-LT
∪	3866	Mocha Brown-UL VY LT
◀	Ecru	Ecru

Blend Stitches. Use one strand of each of DMC1 and DMC2 for these stitches.				
Symbol	DMC1	Name1	DMC2	Name2
●	934	Black Avocado Green	3031	Mocha Brown-VY DK
✱	839	Beige Brown-DK	3787	Brown Gray-DK
☾	3772	Desert Sand-VY DK	3860	Cocoa
☼	610	Drab Brown-DK	839	Beige Brown-DK
↑	3778	Terra Cotta-LT	356	Terra Cotta-MD
✱	3862	Mocha Beige-DK	3772	Desert Sand-VY DK
☼	738	Tan-VY LT	3864	Mocha Beige-LT
—	738	Tan-VY LT	758	Terra Cotta-VY LT
○	3787	Brown Gray-DK	3790	Beige Gray-UL DK
↑	3021	Brown Gray-VY DK	3051	Green Gray-DK
☼	610	Drab Brown-DK	3362	Pine Green-DK
☼	3781	Mocha Brown-DK	3051	Green Gray-DK
☼	610	Drab Brown-DK	632	Desert Sand-UL VY DK
☼	801	Coffee Brown-DK	3781	Mocha Brown-DK
×	356	Terra Cotta-MD	436	Tan
☼	610	Drab Brown-DK	640	Beige Gray-VY DK
☼	610	Drab Brown-DK	3787	Brown Gray-DK
☼	3362	Pine Green-DK	3787	Brown Gray-DK
☼	844	Beaver Brown-UL DK	3787	Brown Gray-DK
◆	610	Drab Brown-DK	840	Beige Brown-MD
○	3021	Brown Gray-VY DK	3031	Mocha Brown-VY DK

//	840	Beige Brown-MD	3772	Desert Sand-VY DK
III	407	Desert Sand-DK	372	Mustard-LT
:	739	Tan-UL VY LT	754	Peach-LT
+	524	Fern Green-VY LT	842	Beige Brown-VY LT
6	3772	Desert Sand-VY DK	3859	Rosewood-LT
%	3022	Brown Gray-MD	3032	Mocha Brown-MD
❖	640	Beige Gray-VY DK	645	Beaver Gray-VY DK
☉	839	Beige Brown-DK	3862	Mocha Beige-DK
8	739	Tan-UL VY LT	950	Desert Sand-LT
3	738	Tan-VY LT	945	Tawny
☆	738	Tan-VY LT	842	Beige Brown-VY LT
*	632	Desert Sand-UL VY DK	3772	Desert Sand-VY DK
↖	3828	Hazelnut Brown	3859	Rosewood-LT
⓪	612	Drab Brown-LT	3064	Desert Sand
⊕	612	Drab Brown-LT	840	Beige Brown-MD
○	353	Peach	754	Peach-LT
●	632	Desert Sand-UL VY DK	840	Beige Brown-MD
⊛	3362	Pine Green-DK	844	Beaver Brown-UL DK
Ⓢ	3828	Hazelnut Brown	356	Terra Cotta-MD
⚙	356	Terra Cotta-MD	632	Desert Sand-UL VY DK
H	640	Beige Gray-VY DK	646	Beaver Gray-DK
➡	3781	Mocha Brown-DK	839	Beige Brown-DK
◇	945	Tawny	842	Beige Brown-VY LT
m	758	Terra Cotta-VY LT	842	Beige Brown-VY LT
▼	3781	Mocha Brown-DK	3787	Brown Gray-DK
..	738	Tan-VY LT	3064	Desert Sand
⊕	632	Desert Sand-UL VY DK	3858	Rosewood-MD
▲	3781	Mocha Brown-DK	610	Drab Brown-DK
●	934	Black Avocado Green	935	Avocado Green-DK
⊛	935	Avocado Green-DK	3031	Mocha Brown-VY DK
✕	611	Drab Brown	3862	Mocha Beige-DK
◇	611	Drab Brown	3772	Desert Sand-VY DK
↓	3781	Mocha Brown-DK	3362	Pine Green-DK
Ⓢ	842	Beige Brown-VY LT	950	Desert Sand-LT
/	842	Beige Brown-VY LT	739	Tan-UL VY LT
⌘	3772	Desert Sand-VY DK	3828	Hazelnut Brown
III	758	Terra Cotta-VY LT	407	Desert Sand-DK
✓	524	Fern Green-VY LT	3782	Mocha Brown-LT
▲	839	Beige Brown-DK	3362	Pine Green-DK
✕	610	Drab Brown-DK	3862	Mocha Beige-DK
⊙	372	Mustard-LT	841	Beige Brown-LT
♯	839	Beige Brown-DK	840	Beige Brown-MD
○	3022	Brown Gray-MD	640	Beige Gray-VY DK
▸	611	Drab Brown	632	Desert Sand-UL VY DK
▲	632	Desert Sand-UL VY DK	3859	Rosewood-LT
○	3031	Mocha Brown-VY DK	3051	Green Gray-DK
♥	3031	Mocha Brown-VY DK	3781	Mocha Brown-DK
⋮	3064	Desert Sand	840	Beige Brown-MD
⊙	3859	Rosewood-LT	841	Beige Brown-LT
▣	433	Brown-MD	840	Beige Brown-MD
⌘	945	Tawny	758	Terra Cotta-VY LT
⸮	3032	Mocha Brown-MD	3790	Beige Gray-UL DK
7	950	Desert Sand-LT	758	Terra Cotta-VY LT
⋮	435	Brown-VY LT	3863	Mocha Beige-MD
✕	3021	Brown Gray-VY DK	3781	Mocha Brown-DK
2	3864	Mocha Beige-LT	758	Terra Cotta-VY LT
+	612	Drab Brown-LT	3863	Mocha Beige-MD
◀	611	Drab Brown	839	Beige Brown-DK
⌘	839	Beige Brown-DK	433	Brown-MD

Copyright (c) 2007-, Golden Kite (Golden K.)

Internet: www.goldenkite.com

e-mail: info@goldenkite.com

↓	945	Tawny	3064	Desert Sand
⬇	3064	Desert Sand	3859	Rosewood-LT
⬇	433	Brown-MD	3781	Mocha Brown-DK
⬇	610	Drab Brown-DK	801	Coffee Brown-DK
⬇	801	Coffee Brown-DK	632	Desert Sand-UL VY DK
⬇	433	Brown-MD	3862	Mocha Beige-DK
⬇	945	Tawny	739	Tan-UL VY LT
⬇	3862	Mocha Beige-DK	632	Desert Sand-UL VY DK
⬇	3772	Desert Sand-VY DK	435	Brown-VY LT
⬇	611	Drab Brown	3859	Rosewood-LT
⬇	758	Terra Cotta-VY LT	3064	Desert Sand
⬇	758	Terra Cotta-VY LT	372	Mustard-LT
⬇	3064	Desert Sand	372	Mustard-LT
⬇	3828	Hazelnut Brown	3064	Desert Sand
↑	3064	Desert Sand	950	Desert Sand-LT
⬆	356	Terra Cotta-MD	3858	Rosewood-MD
⬆	3858	Rosewood-MD	839	Beige Brown-DK
⬆	436	Tan	3778	Terra Cotta-LT
○	353	Peach	951	Tawny-LT
⌈	ecru	Ecru	948	Peach-VY LT
⬆	822	Beige Gray-LT	951	Tawny-LT
⬆	3052	Green Gray-MD	646	Beaver Gray-DK
⬆	3031	Mocha Brown-VY DK	3362	Pine Green-DK
4	543	Beige Brown-UL VY LT	453	Shell Gray-LT
⬆	3032	Mocha Brown-MD	3052	Green Gray-MD
⬆	3052	Green Gray-MD	3790	Beige Gray-UL DK
⬆	3052	Green Gray-MD	645	Beaver Gray-VY DK
⬆	3790	Beige Gray-UL DK	645	Beaver Gray-VY DK
★	3828	Hazelnut Brown	3858	Rosewood-MD
⬆	3064	Desert Sand	3862	Mocha Beige-DK
⬆	822	Beige Gray-LT	948	Peach-VY LT
⬆	3859	Rosewood-LT	758	Terra Cotta-VY LT
♣	610	Drab Brown-DK	3021	Brown Gray-VY DK

This table specifies how much thread of each color is required to stitch this pattern. It is good to know that one complete DMC skein contains 313 inches (795 cm) thread.

DMC	Name	Usage (cm)	Usage (inch)	Usage (cm)	Usage (inch)	Usage (cm)	Usage (inch)
		14		16		18	
353	Peach	32	12	31	12	27	10
356	Terra Cotta-MD	8	3	7	2	6	2
372	Mustard-LT	157	61	149	58	134	52
407	Desert Sand-DK	58	22	55	21	50	19
433	Brown-MD	43	16	41	16	37	14
435	Brown-VY LT	7	2	6	2	6	2
436	Tan	3	1	3	1	2	1
453	Shell Gray-LT	469	184	447	175	402	158
500	Blue Green-VY DK	52	20	49	19	44	17
524	Fern Green-VY LT	340	133	324	127	291	114
543	Beige Brown-UL VY LT	296	116	282	111	254	100
610	Drab Brown-DK	654	257	623	245	560	220
611	Drab Brown	82	32	78	30	70	27
612	Drab Brown-LT	127	50	121	47	109	42
613	Drab Brown-VY LT	117	46	112	44	101	39
632	Desert Sand-UL VY DK	109	42	103	40	93	36
640	Beige Gray-VY DK	326	128	310	122	279	109
642	Beige Gray-DK	220	86	209	82	188	74
644	Beige Gray-MD	399	157	380	149	342	134
645	Beaver Gray-VY DK	246	96	234	92	211	83
646	Beaver Gray-DK	115	45	109	42	98	38
647	Beaver Gray-MD	66	25	63	24	57	22
648	Beaver Gray-LT	56	22	54	21	48	18
738	Tan-VY LT	206	81	197	77	177	69
739	Tan-UL VY LT	302	118	287	112	258	101
754	Peach-LT	53	20	51	20	46	18
758	Terra Cotta-VY LT	158	62	150	59	135	53
801	Coffee Brown-DK	37	14	35	13	32	12
822	Beige Gray-LT	378	148	360	141	324	127
839	Beige Brown-DK	646	254	615	242	554	218
840	Beige Brown-MD	210	82	200	78	180	70
841	Beige Brown-LT	121	47	115	45	103	40
842	Beige Brown-VY LT	878	345	836	329	753	296
844	Beaver Brown-UL DK	131	51	124	48	112	44
934	Black Avocado Green	2112	831	2011	791	1810	712
935	Avocado Green-DK	1670	657	1590	625	1431	563
945	Tawny	142	55	135	53	122	48
948	Peach-VY LT	628	247	598	235	538	211
950	Desert Sand-LT	220	86	210	82	189	74
951	Tawny-LT	226	88	215	84	193	75
3021	Brown Gray-VY DK	2041	803	1944	765	1749	688
3022	Brown Gray-MD	260	102	247	97	223	87
3023	Brown Gray-LT	84	33	80	31	72	28
3031	Mocha Brown-VY DK	5127	2018	4883	1922	4394	1729
3032	Mocha Brown-MD	447	175	426	167	383	150
3033	Mocha Brown-VY LT	32	12	31	12	28	11
3051	Green Gray-DK	4171	1642	3973	1564	3575	1407
3052	Green Gray-MD	170	66	162	63	146	57
3053	Green Gray	9	3	8	3	7	2
3064	Desert Sand	299	117	285	112	256	100
3362	Pine Green-DK	1648	648	1569	617	1412	555
3770	Tawny-VY LT	12	4	12	4	11	4
3772	Desert Sand-VY DK	111	43	106	41	95	37
3774	Desert Sand-VY LT	402	158	383	150	345	135

Copyright (c) 2007-, Golden Kite (Golden K.)

Internet: www.goldenkite.com

e-mail: info@goldenkite.com

3778	Terra Cotta-LT	3	1	3	1	3	1
3779	Terra Cotta-UL VY LT	5	1	5	1	4	1
3781	Mocha Brown-DK	1894	745	1803	709	1623	638
3782	Mocha Brown-LT	248	97	236	92	212	83
3787	Brown Gray-DK	528	207	503	198	452	177
3790	Beige Gray-UL DK	282	111	269	105	242	95
3828	Hazelnut Brown	62	24	59	23	53	20
3858	Rosewood-MD	21	8	20	7	18	7
3859	Rosewood-LT	80	31	76	29	68	26
3860	Cocoa	4	1	4	1	3	1
3862	Mocha Beige-DK	207	81	198	77	178	70
3863	Mocha Beige-MD	80	31	76	29	69	27
3864	Mocha Beige-LT	134	52	127	50	115	45
3866	Mocha Brown-UL VY LT	64	25	61	24	55	21
ecru	Ecru	175	68	167	65	150	59

Extended thread usage table.							
DMC	Name	Usage (cm)	Usage (inch)	Usage (cm)	Usage (inch)	Usage (cm)	Usage (inch)
		10		12		24	
353	Peach	49	18	41	15	20	8
356	Terra Cotta-MD	11	4	9	3	5	2
372	Mustard-LT	241	94	201	78	101	39
407	Desert Sand-DK	90	34	75	29	38	14
433	Brown-MD	67	25	56	21	28	11
435	Brown-VY LT	11	4	9	3	5	2
436	Tan	4	2	3	2	2	1
453	Shell Gray-LT	724	284	603	237	302	119
500	Blue Green-VY DK	79	31	66	26	33	13
524	Fern Green-VY LT	524	205	437	171	218	86
543	Beige Brown-UL VY LT	457	180	381	150	191	75
610	Drab Brown-DK	1008	396	840	330	420	165
611	Drab Brown	126	49	105	41	53	20
612	Drab Brown-LT	196	76	164	63	82	32
613	Drab Brown-VY LT	182	70	152	59	76	29
632	Desert Sand-UL VY DK	167	65	140	54	70	27
640	Beige Gray-VY DK	502	196	419	164	209	82
642	Beige Gray-DK	338	133	282	111	141	56
644	Beige Gray-MD	616	241	513	201	257	101
645	Beaver Gray-VY DK	380	149	317	125	158	62
646	Beaver Gray-DK	176	68	147	57	74	29
647	Beaver Gray-MD	103	40	86	33	43	17
648	Beaver Gray-LT	86	32	72	27	36	14
738	Tan-VY LT	319	124	266	104	133	52
739	Tan-UL VY LT	464	182	387	152	194	76
754	Peach-LT	83	32	69	27	35	14
758	Terra Cotta-VY LT	243	95	203	80	101	40
801	Coffee Brown-DK	58	22	48	18	24	9
822	Beige Gray-LT	583	229	486	191	243	95
839	Beige Brown-DK	997	392	831	327	416	164
840	Beige Brown-MD	324	126	270	105	135	53
841	Beige Brown-LT	185	72	155	60	77	30
842	Beige Brown-VY LT	1355	533	1130	444	565	222
844	Beaver Brown-UL DK	202	79	168	66	84	33
934	Black Avocado Green	3258	1282	2715	1068	1358	534
935	Avocado Green-DK	2576	1013	2147	845	1073	422
945	Tawny	220	86	183	72	92	36

948	Peach-VY LT	968	380	807	317	404	158
950	Desert Sand-LT	340	133	284	111	142	56
951	Tawny-LT	347	135	290	113	145	56
3021	Brown Gray-VY DK	3148	1238	2624	1032	1312	516
3022	Brown Gray-MD	401	157	335	131	167	65
3023	Brown Gray-LT	130	50	108	42	54	21
3031	Mocha Brown-VY DK	7909	3112	6591	2594	3296	1297
3032	Mocha Brown-MD	689	270	575	225	287	113
3033	Mocha Brown-VY LT	50	20	42	17	21	8
3051	Green Gray-DK	6435	2533	5363	2111	2681	1055
3052	Green Gray-MD	263	103	219	86	110	43
3053	Green Gray	13	4	11	3	5	2
3064	Desert Sand	461	180	384	150	192	75
3362	Pine Green-DK	2542	999	2118	833	1059	416
3770	Tawny-VY LT	20	7	17	6	8	3
3772	Desert Sand-VY DK	171	67	143	56	71	28
3774	Desert Sand-VY LT	621	243	518	203	259	101
3778	Terra Cotta-LT	5	2	5	2	2	1
3779	Terra Cotta-UL VY LT	7	2	6	2	3	1
3781	Mocha Brown-DK	2921	1148	2435	957	1217	479
3782	Mocha Brown-LT	382	149	318	125	159	62
3787	Brown Gray-DK	814	319	678	266	339	133
3790	Beige Gray-UL DK	436	171	363	143	182	71
3828	Hazelnut Brown	95	36	80	30	40	15
3858	Rosewood-MD	32	13	27	11	14	5
3859	Rosewood-LT	122	47	102	39	51	20
3860	Cocoa	5	2	5	2	2	1
3862	Mocha Beige-DK	320	126	267	105	134	53
3863	Mocha Beige-MD	124	49	104	41	52	20
3864	Mocha Beige-LT	207	81	173	68	86	34
3866	Mocha Brown-UL VY LT	99	38	83	32	41	16
ecru	Ecru	270	106	225	89	113	44

Extended thread usage table.							
DMC	Name	Usage (cm)		Usage (inch)		Usage (cm)	
		25		26		27	
353	Peach	19	7	19	7	18	7
356	Terra Cotta-MD	4	1	4	1	4	1
372	Mustard-LT	96	37	93	36	89	35
407	Desert Sand-DK	36	14	35	13	33	13
433	Brown-MD	27	10	26	10	25	9
435	Brown-VY LT	4	1	4	1	4	1
436	Tan	1	1	1	1	1	1
453	Shell Gray-LT	289	114	278	109	268	105
500	Blue Green-VY DK	32	12	30	12	29	11
524	Fern Green-VY LT	210	82	201	79	194	76
543	Beige Brown-UL VY LT	183	72	176	69	169	67
610	Drab Brown-DK	403	158	388	152	373	147
611	Drab Brown	50	19	48	19	47	18
612	Drab Brown-LT	78	30	75	29	73	28
613	Drab Brown-VY LT	73	28	70	27	67	26
632	Desert Sand-UL VY DK	67	26	64	25	62	24
640	Beige Gray-VY DK	201	78	193	75	186	73
642	Beige Gray-DK	135	53	130	51	125	49
644	Beige Gray-MD	246	96	237	93	228	89
645	Beaver Gray-VY DK	152	60	146	57	141	55

646	Beaver Gray-DK	71	27	68	26	65	25
647	Beaver Gray-MD	41	16	39	15	38	15
648	Beaver Gray-LT	35	13	33	12	32	12
738	Tan-VY LT	127	50	123	48	118	46
739	Tan-UL VY LT	186	73	179	70	172	67
754	Peach-LT	33	13	32	12	31	12
758	Terra Cotta-VY LT	97	38	93	37	90	35
801	Coffee Brown-DK	23	9	22	8	21	8
822	Beige Gray-LT	233	91	224	88	216	85
839	Beige Brown-DK	399	157	384	151	369	145
840	Beige Brown-MD	130	50	125	48	120	47
841	Beige Brown-LT	74	29	71	28	69	27
842	Beige Brown-VY LT	542	213	521	205	502	197
844	Beaver Brown-UL DK	81	32	78	30	75	29
934	Black Avocado Green	1303	513	1253	493	1207	475
935	Avocado Green-DK	1030	405	991	390	954	375
945	Tawny	88	35	84	33	81	32
948	Peach-VY LT	387	152	372	146	359	141
950	Desert Sand-LT	136	53	131	51	126	49
951	Tawny-LT	139	54	134	52	129	50
3021	Brown Gray-VY DK	1259	495	1211	476	1166	459
3022	Brown Gray-MD	161	63	154	60	149	58
3023	Brown Gray-LT	52	20	50	19	48	19
3031	Mocha Brown-VY DK	3164	1245	3042	1197	2929	1153
3032	Mocha Brown-MD	276	108	265	104	255	100
3033	Mocha Brown-VY LT	20	8	19	8	19	7
3051	Green Gray-DK	2574	1013	2475	974	2383	938
3052	Green Gray-MD	105	41	101	39	97	38
3053	Green Gray	5	1	5	1	5	1
3064	Desert Sand	184	72	177	69	171	67
3362	Pine Green-DK	1017	400	978	384	941	370
3770	Tawny-VY LT	8	3	8	3	7	3
3772	Desert Sand-VY DK	68	27	66	26	63	25
3774	Desert Sand-VY LT	248	97	239	93	230	90
3778	Terra Cotta-LT	2	1	2	1	2	1
3779	Terra Cotta-UL VY LT	3	1	3	1	3	1
3781	Mocha Brown-DK	1169	459	1124	442	1082	425
3782	Mocha Brown-LT	153	60	147	57	141	55
3787	Brown Gray-DK	325	127	313	123	301	118
3790	Beige Gray-UL DK	174	68	168	66	161	63
3828	Hazelnut Brown	38	14	37	14	35	13
3858	Rosewood-MD	13	5	12	5	12	5
3859	Rosewood-LT	49	19	47	18	45	17
3860	Cocoa	2	1	2	1	2	1
3862	Mocha Beige-DK	128	50	123	48	119	47
3863	Mocha Beige-MD	50	19	48	19	46	18
3864	Mocha Beige-LT	83	32	80	31	77	30
3866	Mocha Brown-UL VY LT	40	15	38	15	37	14
ecru	Ecru	108	42	104	41	100	39

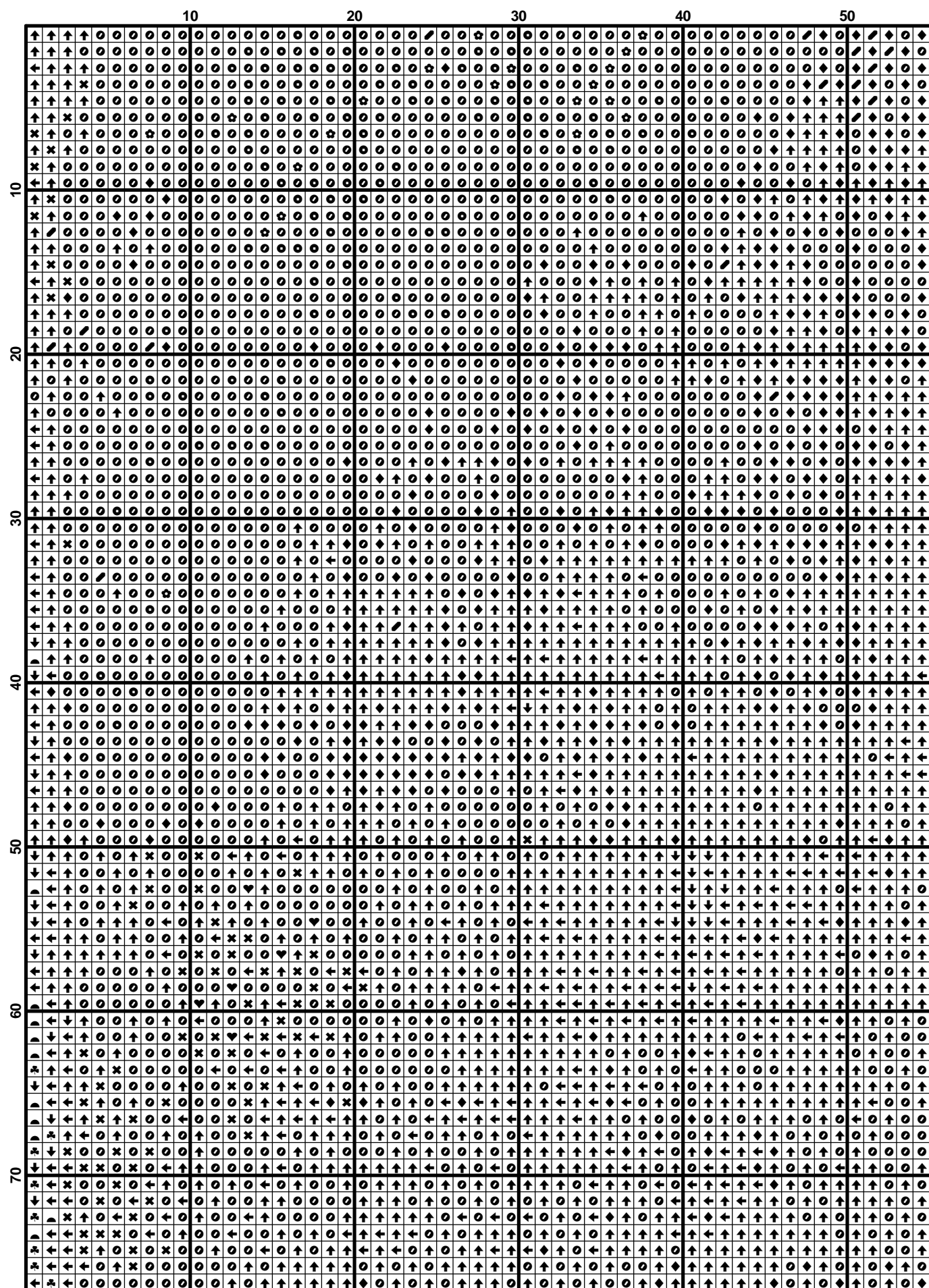
Extended thread usage table.							
DMC	Name	Usage (cm)	Usage (inch)	Usage (cm)	Usage (inch)	Usage (cm)	Usage (inch)
		28		30		32	
353	Peach	17	6	16	6	15	6
356	Terra Cotta-MD	4	1	4	1	3	1
372	Mustard-LT	86	33	80	31	75	29
407	Desert Sand-DK	32	12	30	11	28	11
433	Brown-MD	24	9	22	8	21	8
435	Brown-VY LT	4	1	4	1	3	1
436	Tan	1	1	1	1	1	1
453	Shell Gray-LT	258	102	241	95	226	89
500	Blue Green-VY DK	28	11	26	10	25	10
524	Fern Green-VY LT	187	73	175	68	164	64
543	Beige Brown-UL VY LT	163	64	152	60	143	56
610	Drab Brown-DK	360	141	336	132	315	124
611	Drab Brown	45	17	42	16	39	15
612	Drab Brown-LT	70	27	65	25	61	24
613	Drab Brown-VY LT	65	25	61	23	57	22
632	Desert Sand-UL VY DK	60	23	56	22	52	20
640	Beige Gray-VY DK	179	70	167	65	157	61
642	Beige Gray-DK	121	48	113	44	106	42
644	Beige Gray-MD	220	86	205	80	192	75
645	Beaver Gray-VY DK	136	53	127	50	119	47
646	Beaver Gray-DK	63	24	59	23	55	21
647	Beaver Gray-MD	37	14	34	13	32	12
648	Beaver Gray-LT	31	12	29	11	27	10
738	Tan-VY LT	114	44	106	41	100	39
739	Tan-UL VY LT	166	65	155	61	145	57
754	Peach-LT	30	12	28	11	26	10
758	Terra Cotta-VY LT	87	34	81	32	76	30
801	Coffee Brown-DK	21	8	19	7	18	7
822	Beige Gray-LT	208	82	194	76	182	71
839	Beige Brown-DK	356	140	332	131	312	123
840	Beige Brown-MD	116	45	108	42	101	39
841	Beige Brown-LT	66	26	62	24	58	23
842	Beige Brown-VY LT	484	190	452	178	424	167
844	Beaver Brown-UL DK	72	28	67	26	63	25
934	Black Avocado Green	1164	458	1086	427	1018	401
935	Avocado Green-DK	920	362	859	338	805	317
945	Tawny	78	31	73	29	69	27
948	Peach-VY LT	346	136	323	127	303	119
950	Desert Sand-LT	122	48	113	44	106	42
951	Tawny-LT	124	48	116	45	109	42
3021	Brown Gray-VY DK	1124	442	1049	413	984	387
3022	Brown Gray-MD	143	56	134	52	125	49
3023	Brown Gray-LT	46	18	43	17	41	16
3031	Mocha Brown-VY DK	2825	1112	2636	1037	2472	973
3032	Mocha Brown-MD	246	96	230	90	215	84
3033	Mocha Brown-VY LT	18	7	17	7	16	6
3051	Green Gray-DK	2298	905	2145	844	2011	791
3052	Green Gray-MD	94	37	88	34	82	32
3053	Green Gray	5	1	4	1	4	1
3064	Desert Sand	165	64	154	60	144	56
3362	Pine Green-DK	908	357	847	333	794	312
3770	Tawny-VY LT	7	3	7	2	6	2
3772	Desert Sand-VY DK	61	24	57	22	53	21
3774	Desert Sand-VY LT	222	87	207	81	194	76

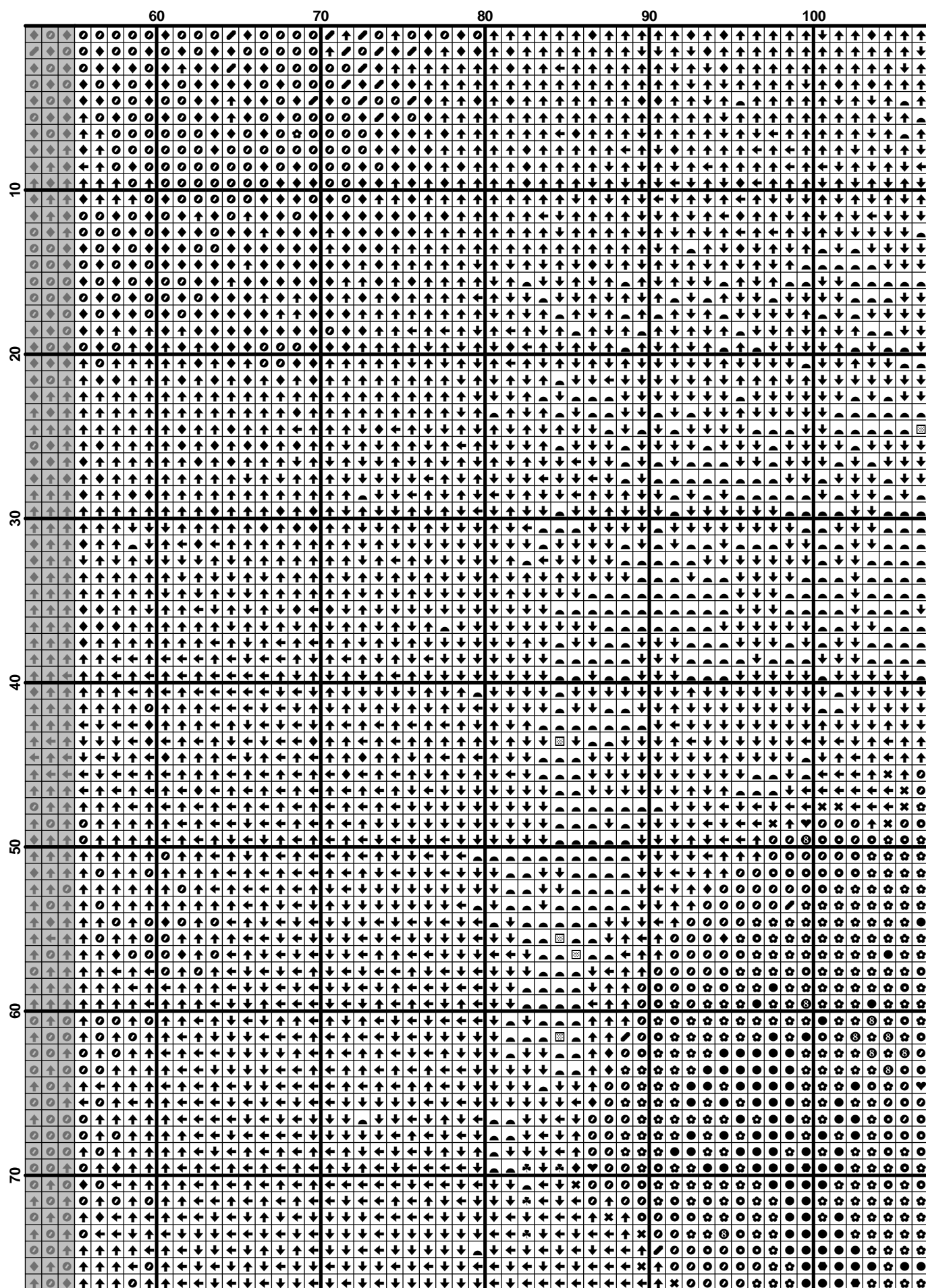
Copyright (c) 2007-, Golden Kite (Golden K.)

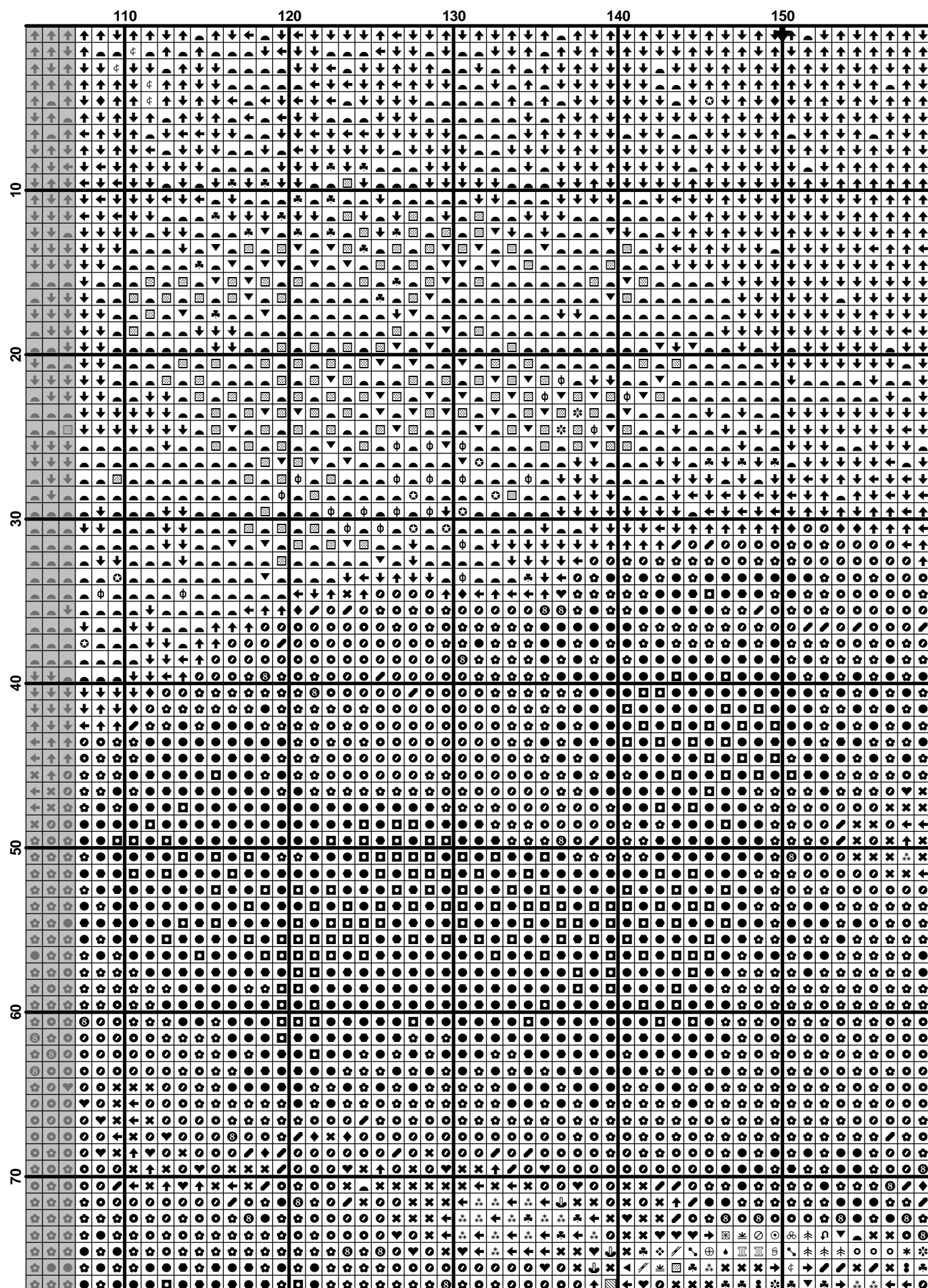
Internet: www.goldenkite.com

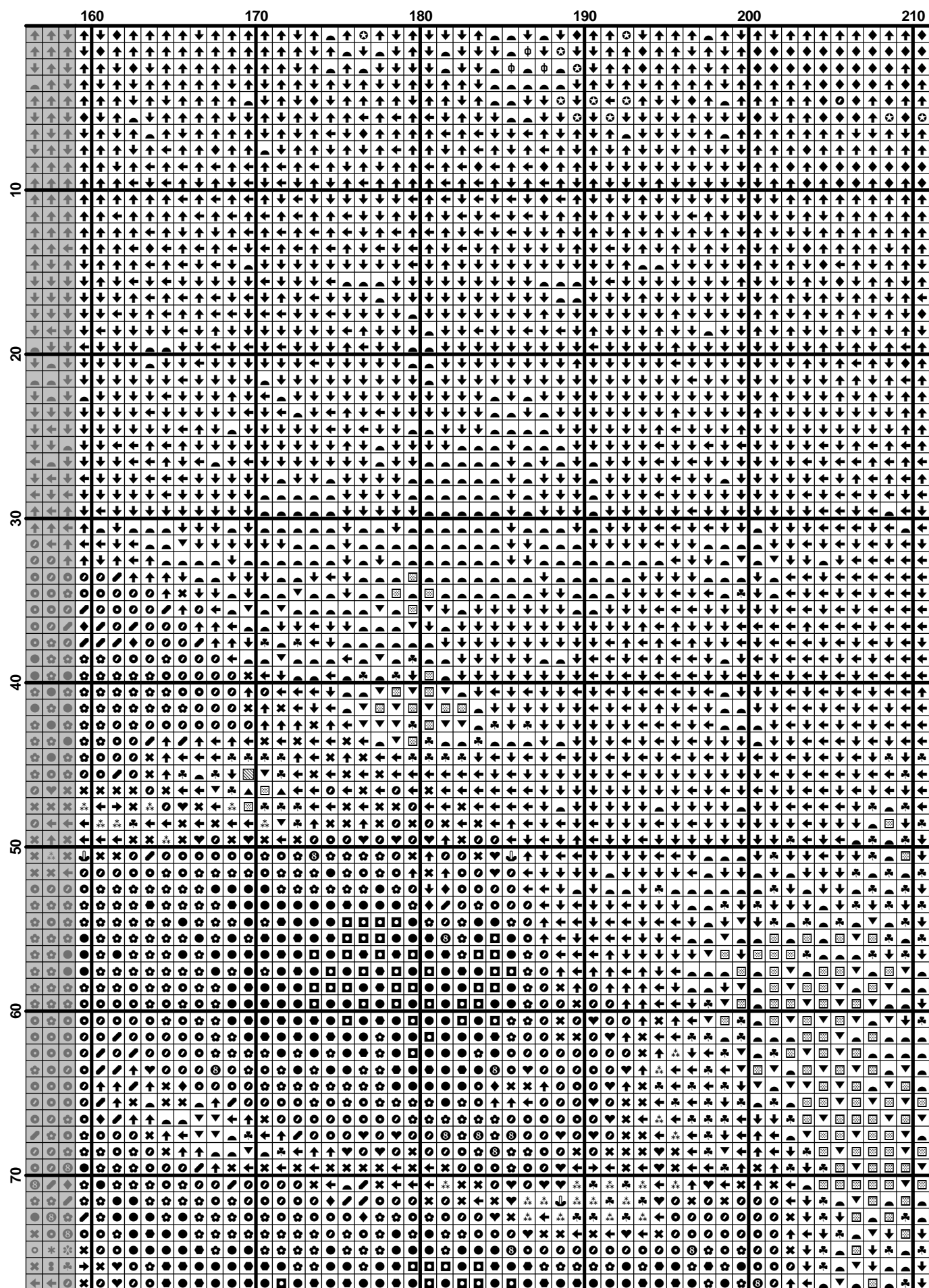
e-mail: info@goldenkite.com

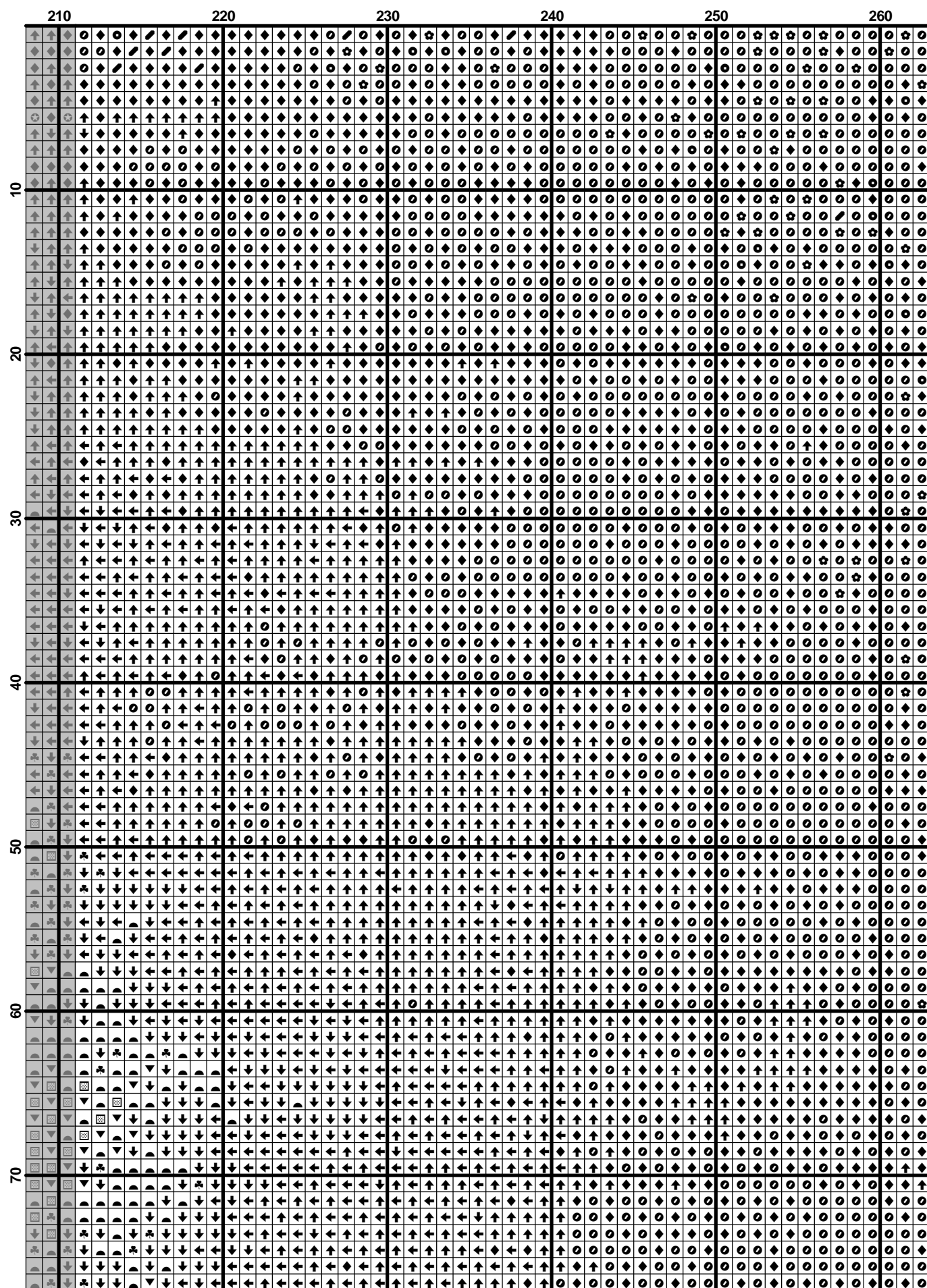
3778	Terra Cotta-LT	2	1	2	1	2	1
3779	Terra Cotta-UL VY LT	3	1	2	1	2	1
3781	Mocha Brown-DK	1043	410	974	383	913	359
3782	Mocha Brown-LT	136	53	127	50	119	47
3787	Brown Gray-DK	291	114	271	106	254	100
3790	Beige Gray-UL DK	156	61	145	57	136	53
3828	Hazelnut Brown	34	13	32	12	30	11
3858	Rosewood-MD	12	5	11	4	10	4
3859	Rosewood-LT	44	17	41	16	38	15
3860	Cocoa	2	1	2	1	2	1
3862	Mocha Beige-DK	114	45	107	42	100	39
3863	Mocha Beige-MD	44	17	41	16	39	15
3864	Mocha Beige-LT	74	29	69	27	65	25
3866	Mocha Brown-UL VY LT	35	14	33	13	31	12
ecru	Ecru	96	38	90	35	84	33

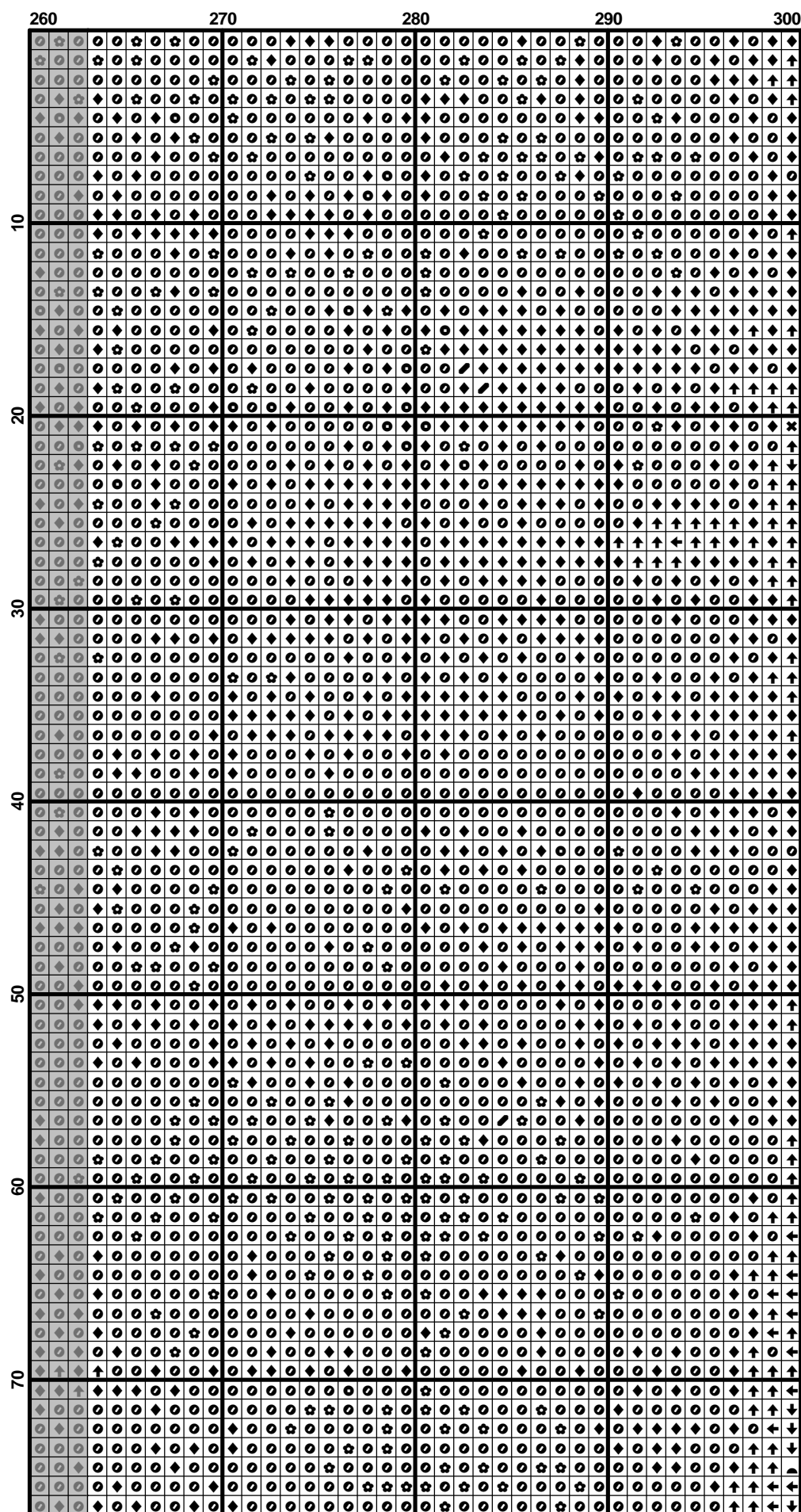


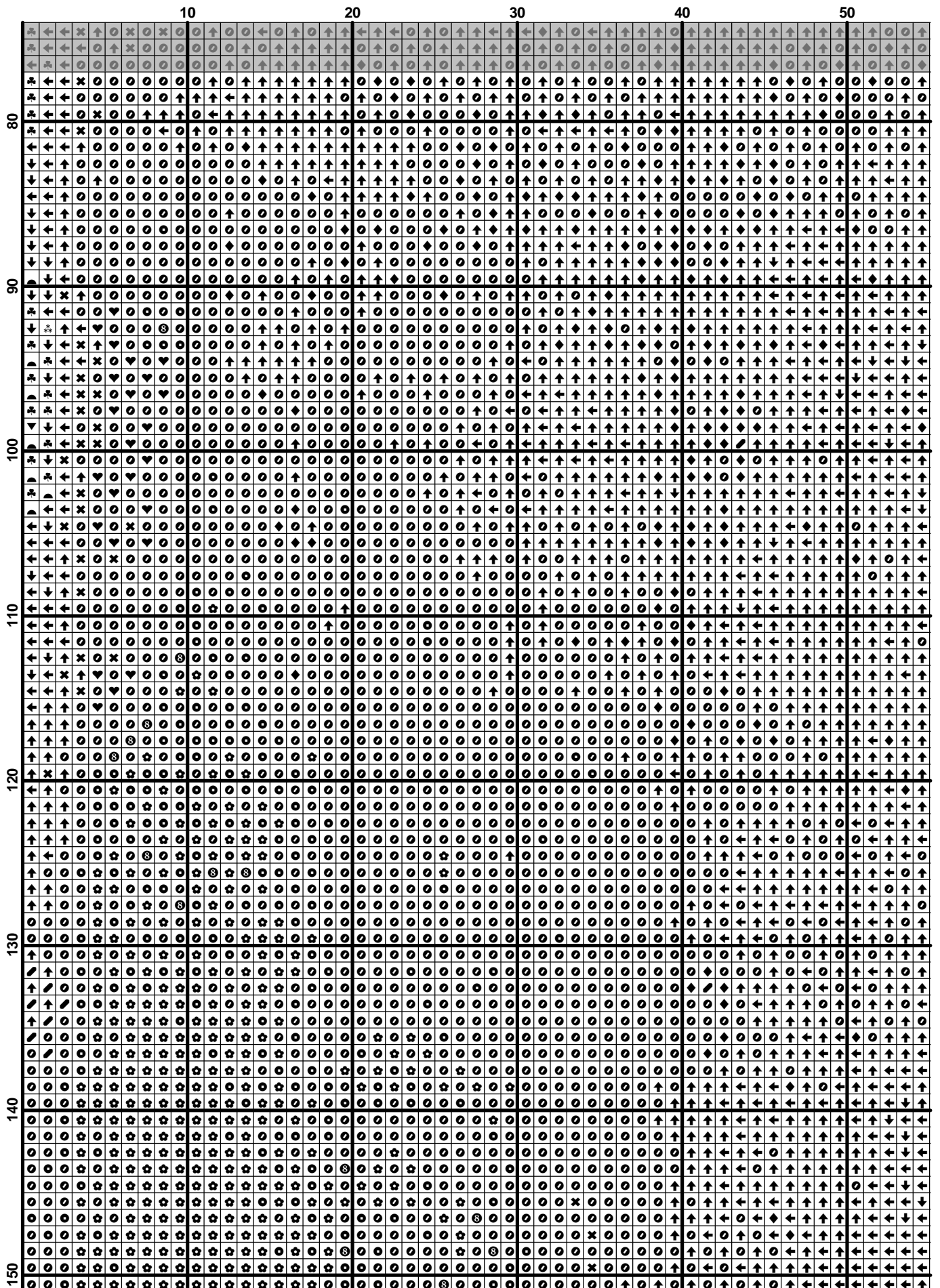


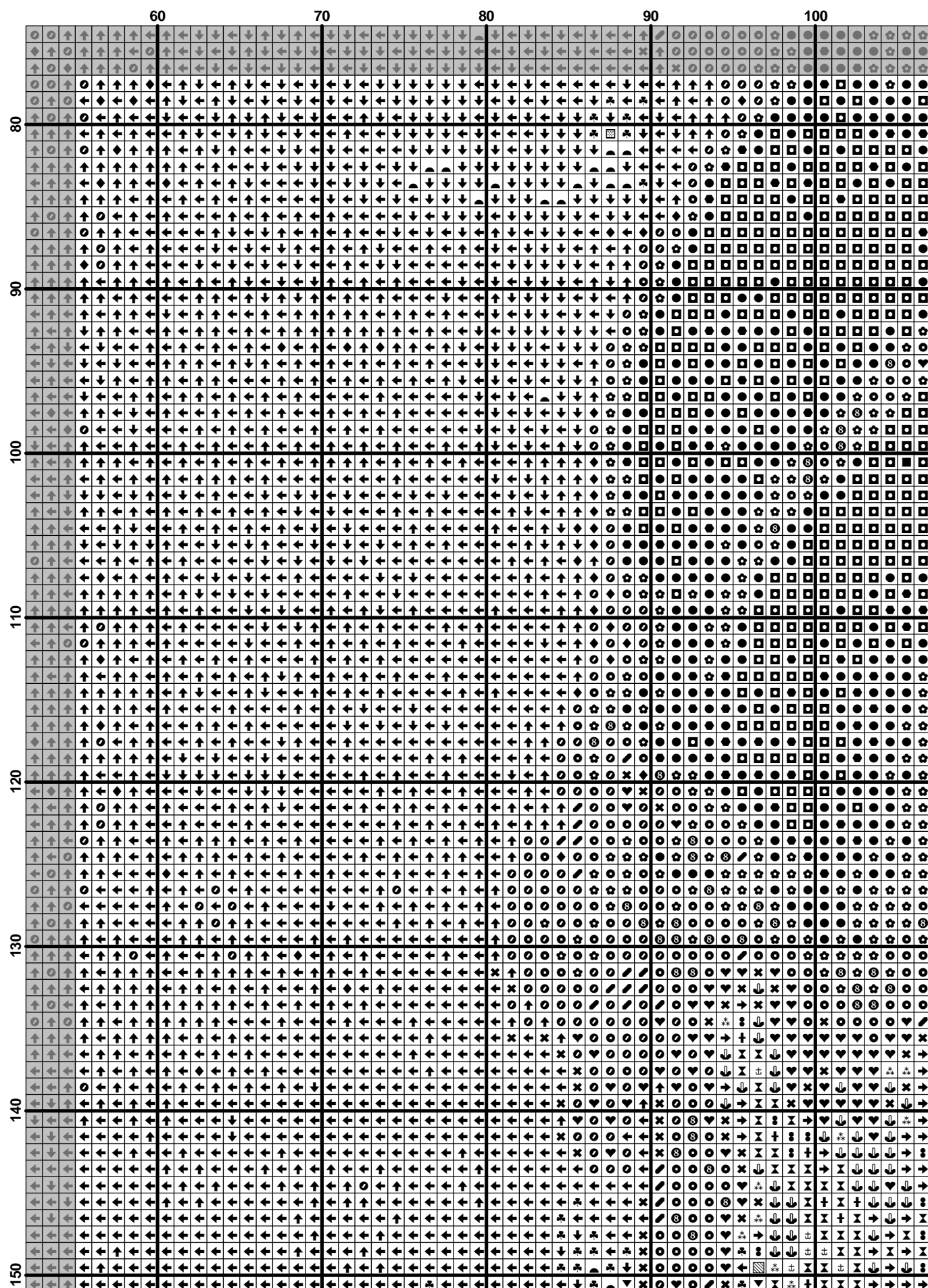


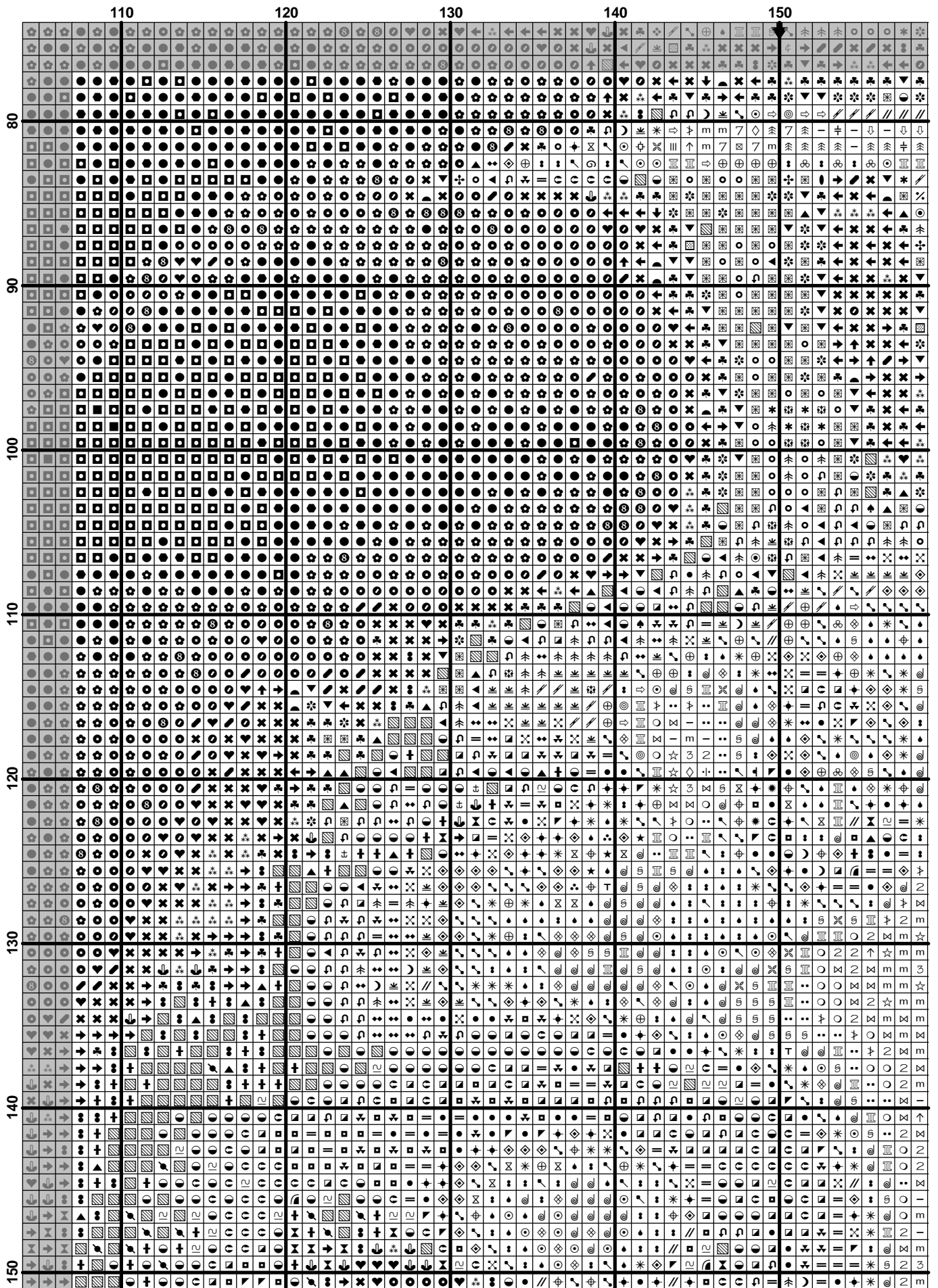




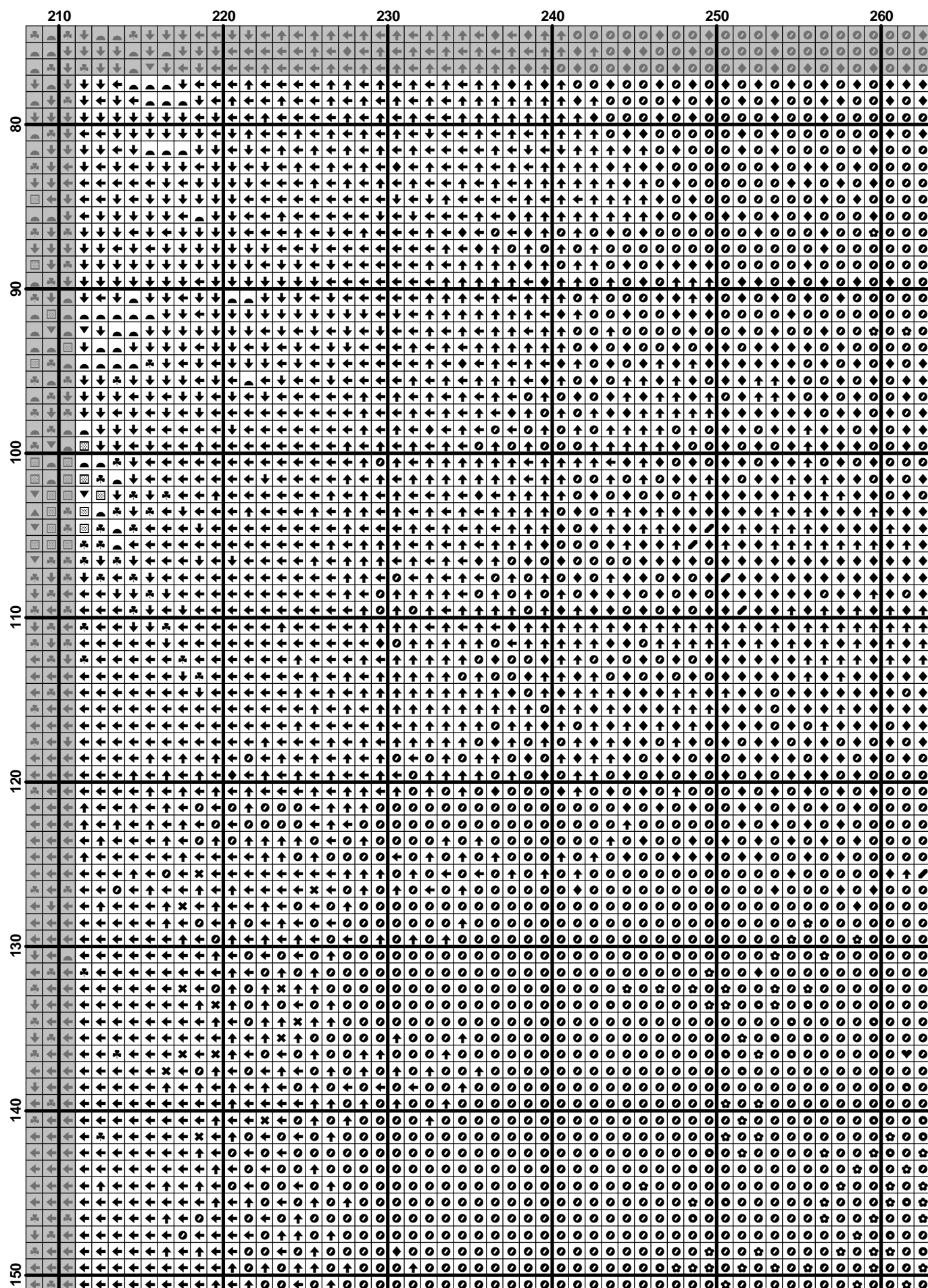


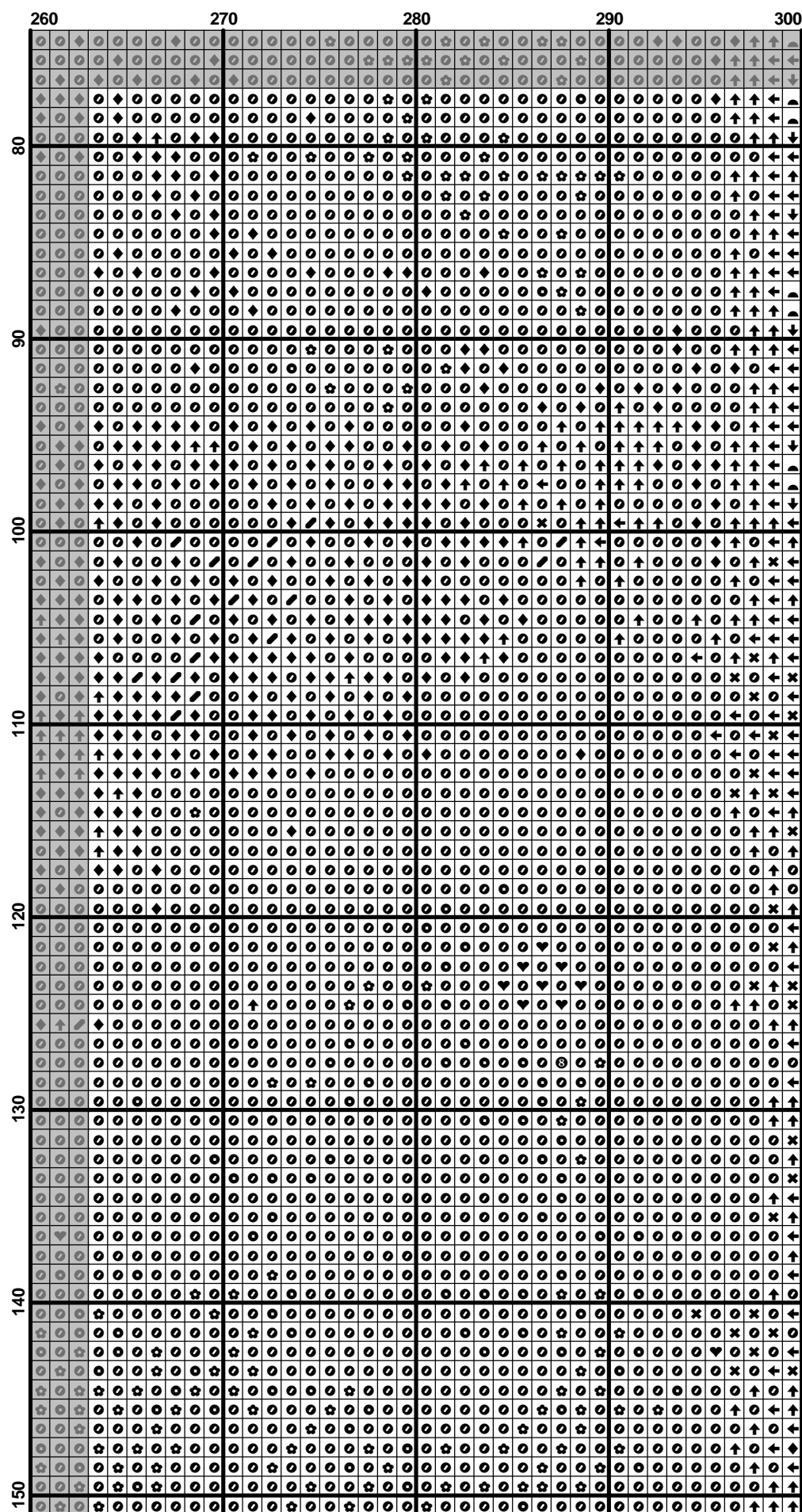


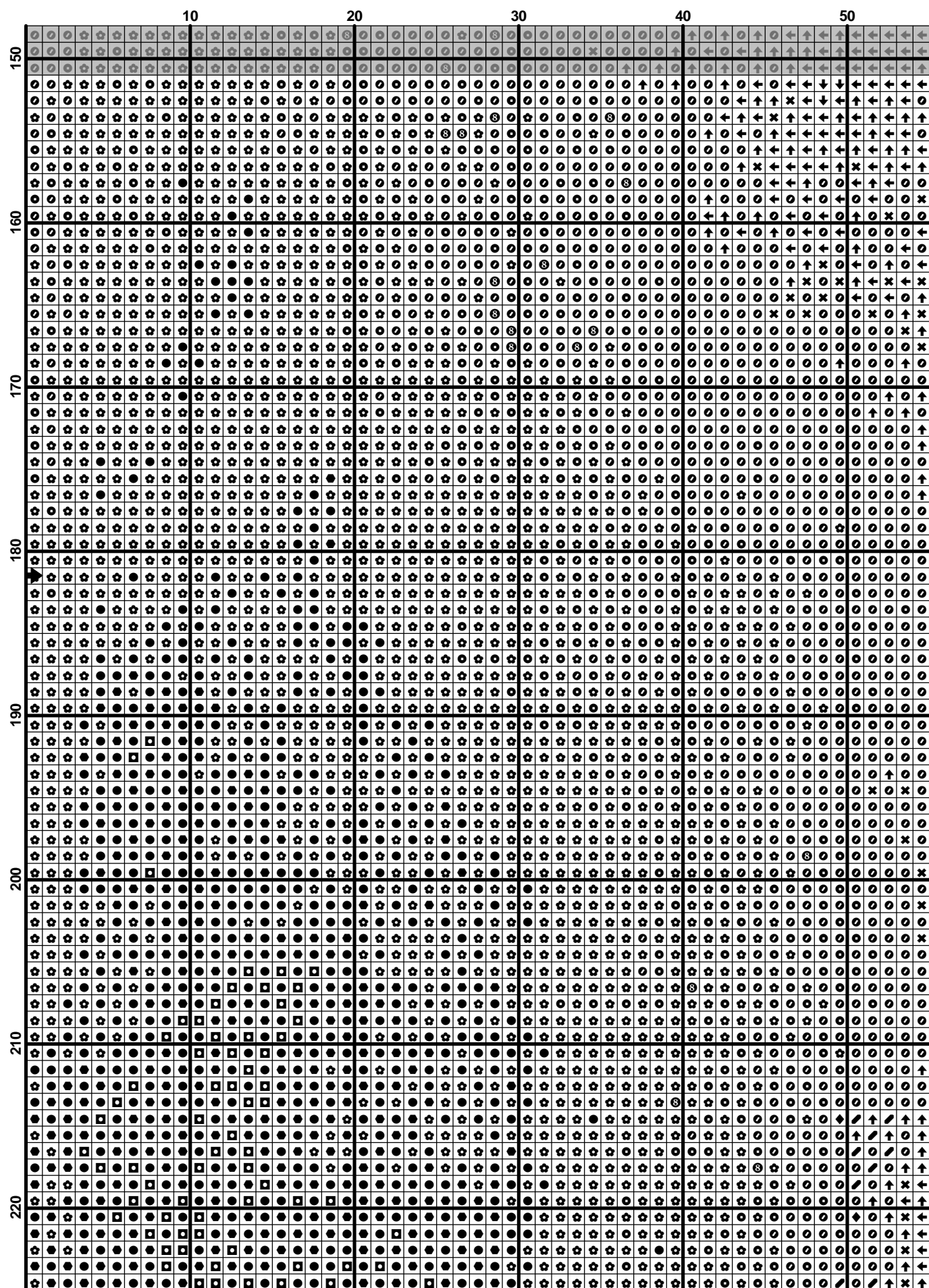


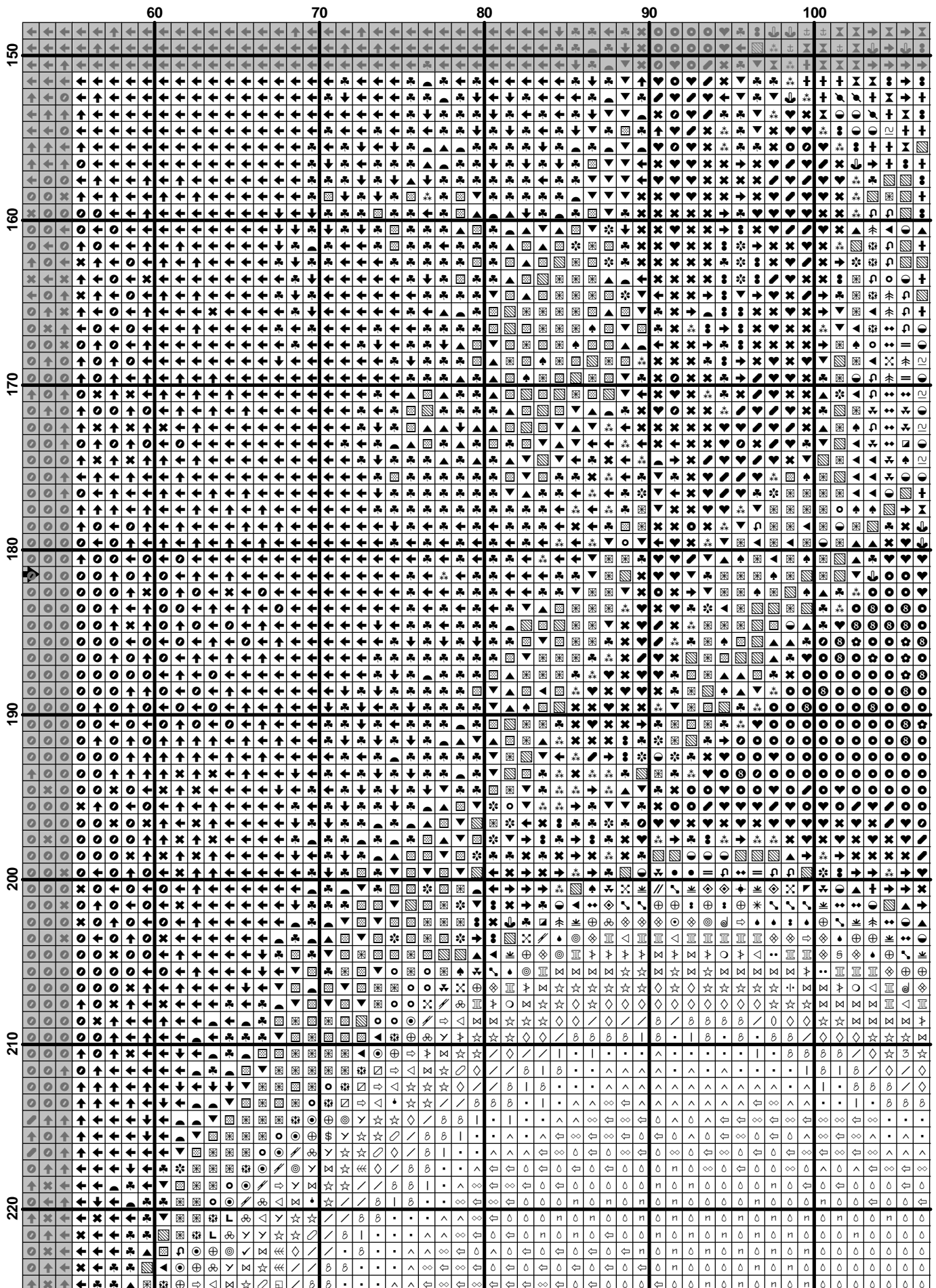


$$(16) \quad \mathcal{H}^1(\mathcal{O}_X) = 0 \quad (17)$$





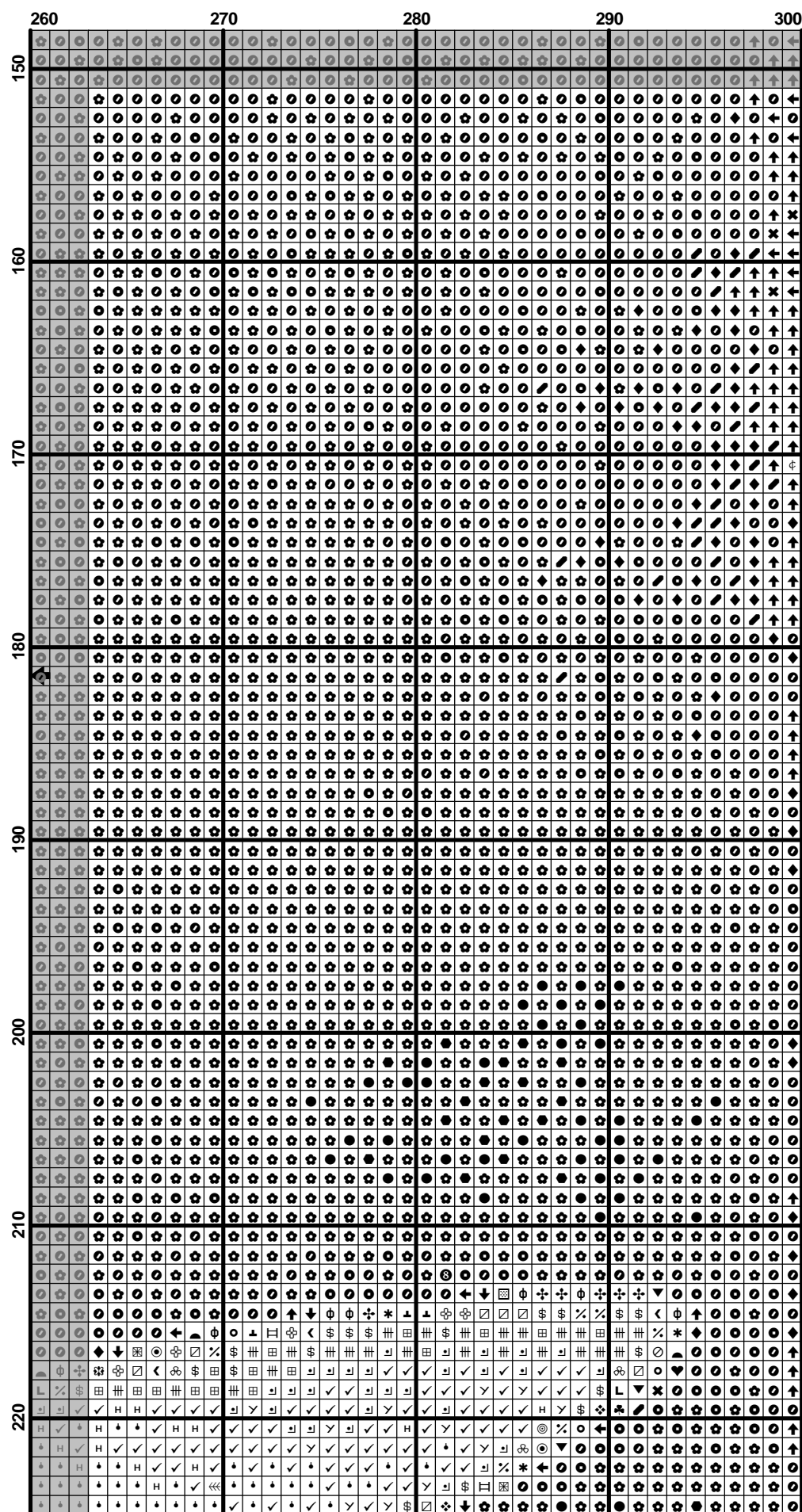


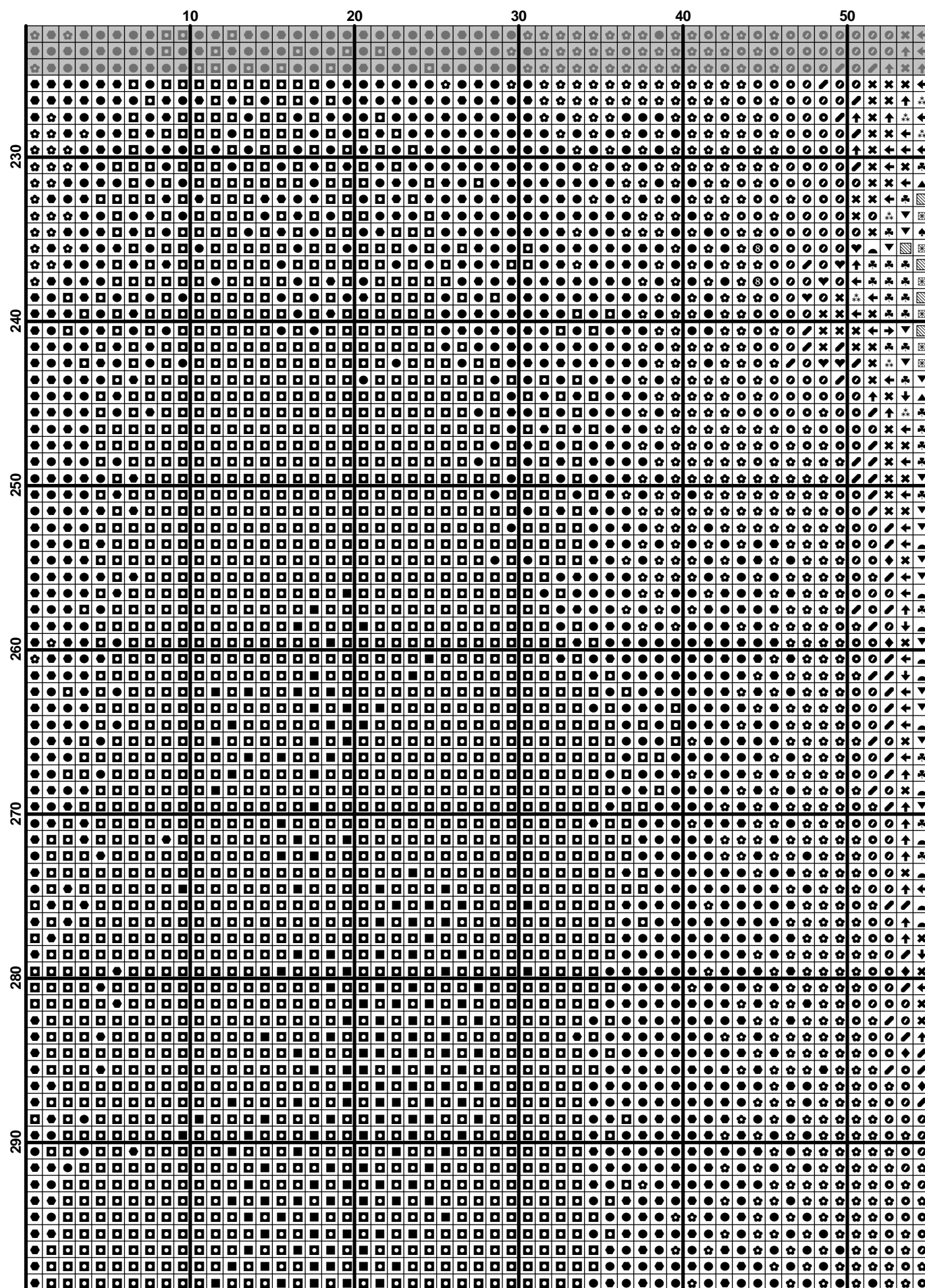


$$(21) \quad \mathcal{L}(\mathcal{A}) = \mathcal{L}(\mathcal{B}) \quad (22)$$

$$(22) \quad \mathcal{H}^{\text{reg}}_{\text{reg}} = \mathcal{H}^{\text{reg}}_{\text{reg}} \quad (23)$$

	210	220	230	240	250	260
150						
160						
170						
180						
190						
200						
210						
220						



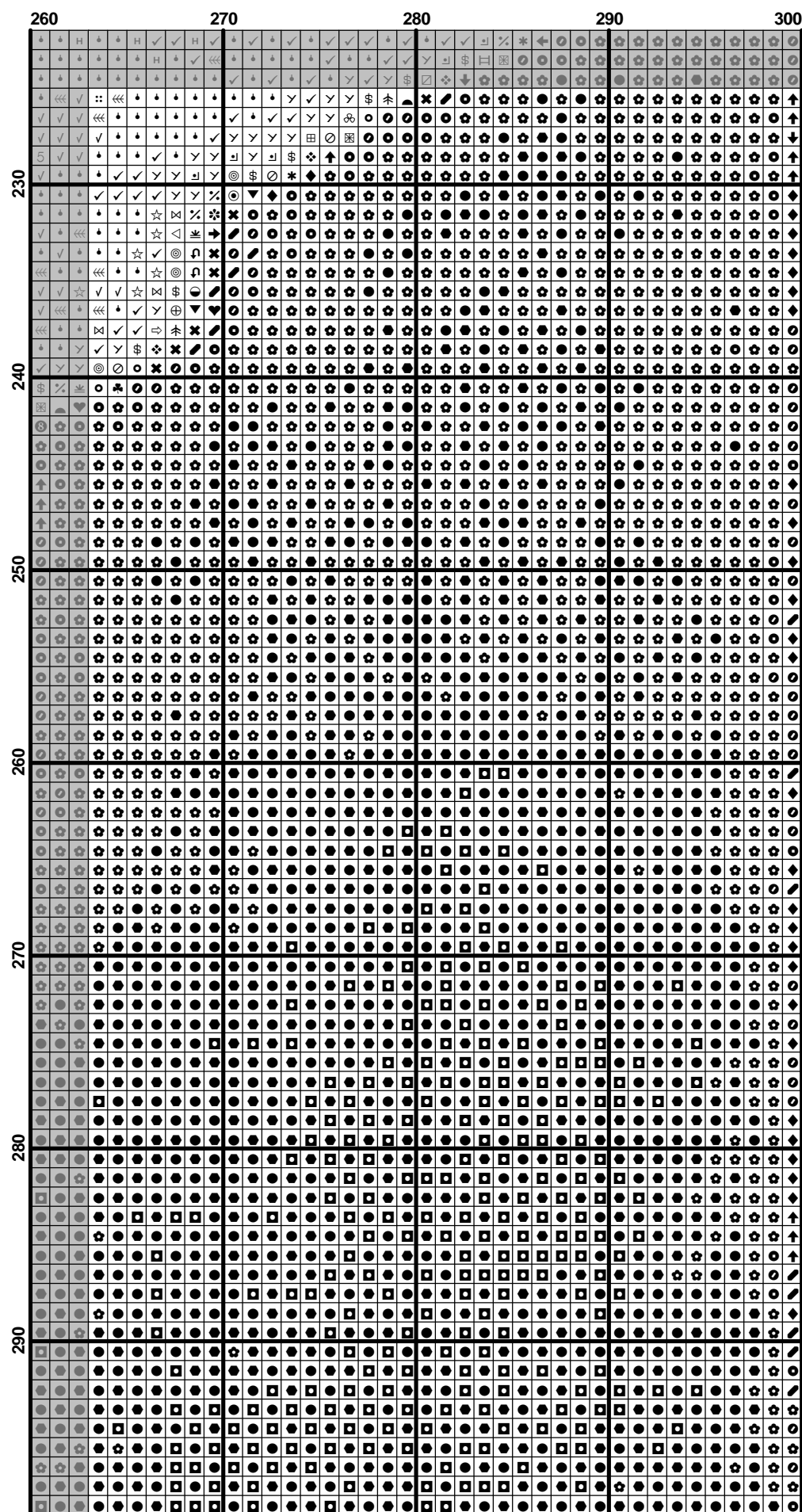


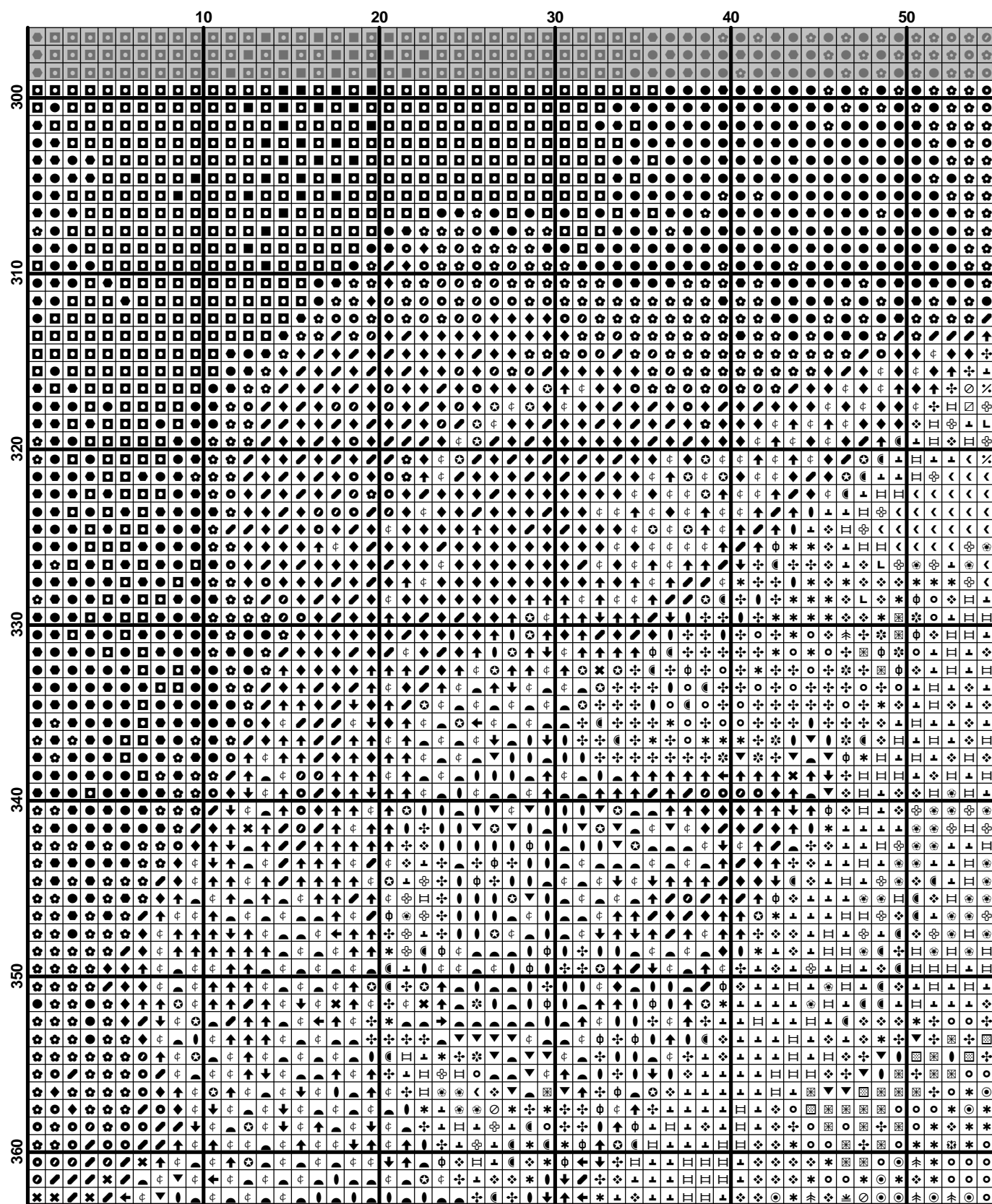
[illegible]

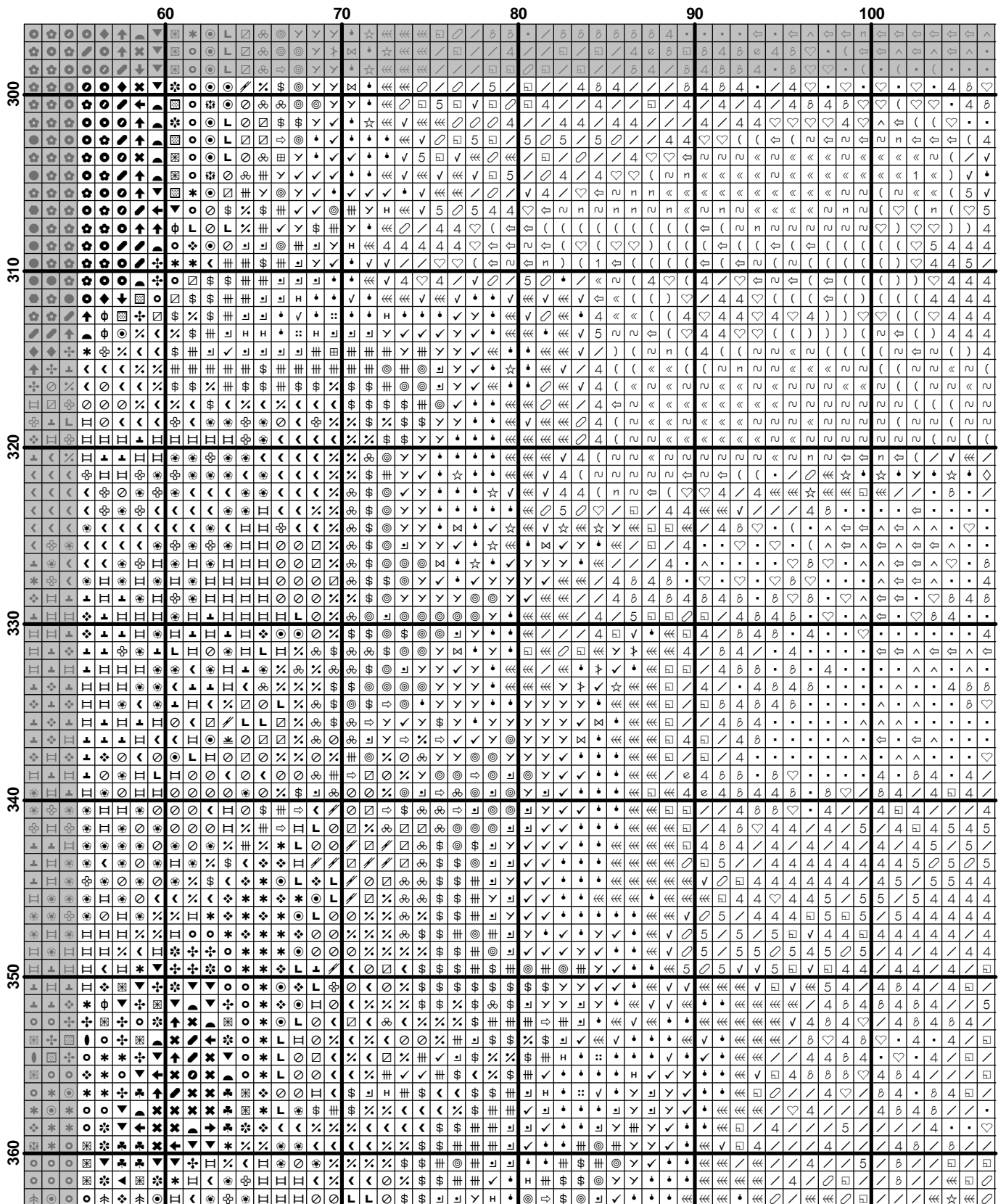
$$(27) \quad \mathcal{L}(\mathcal{A}) = \mathcal{L}(\mathcal{B}) \quad (28)$$

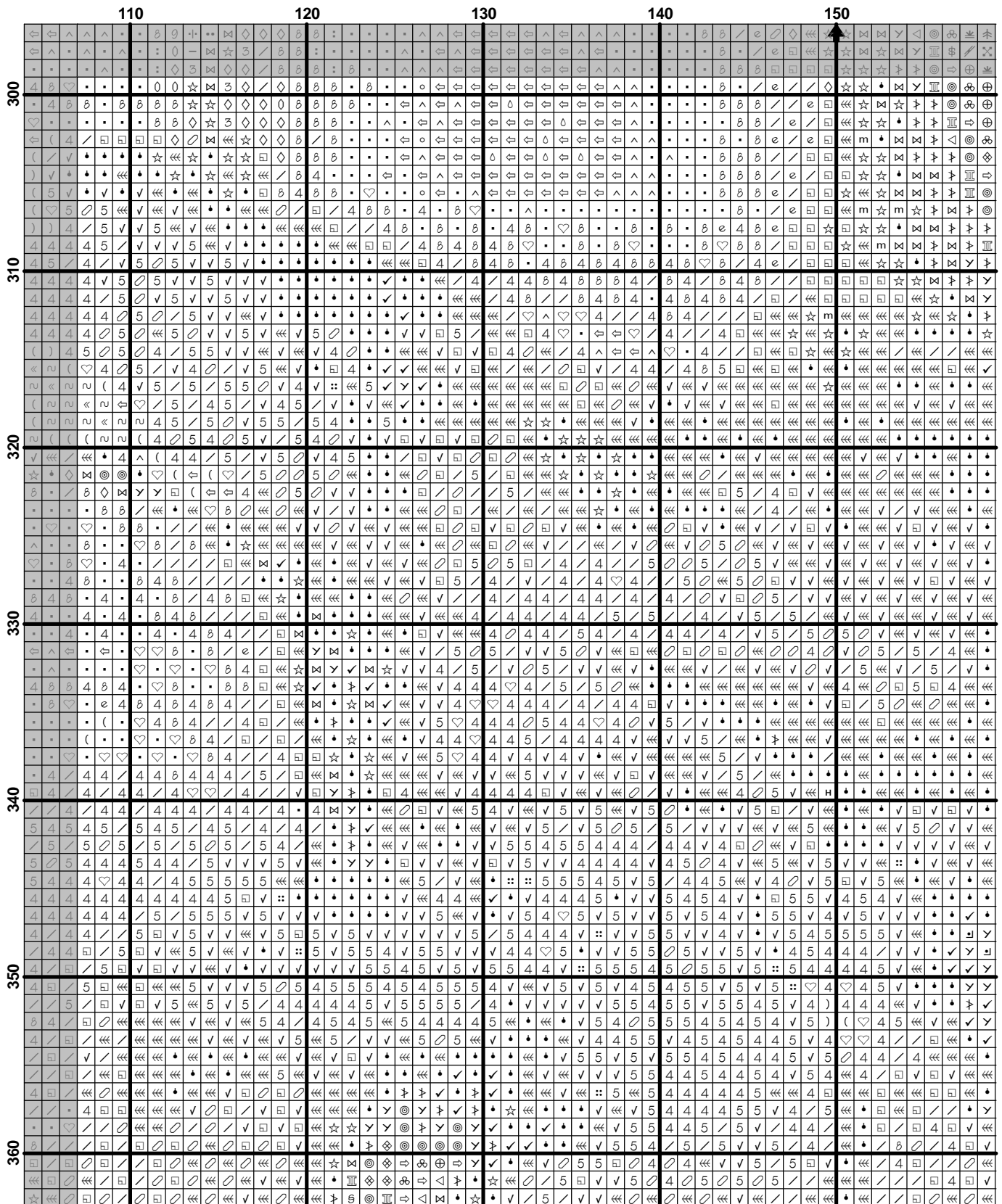
	160	170	180	190	200	210
230	☆	☆	☆	☆	☆	☆
240	☆	☆	☆	☆	☆	☆
250	☆	☆	☆	☆	☆	☆
260	☆	☆	☆	☆	☆	☆
270	☆	☆	☆	☆	☆	☆
280	☆	☆	☆	☆	☆	☆
290	☆	☆	☆	☆	☆	☆
300	☆	☆	☆	☆	☆	☆
310	☆	☆	☆	☆	☆	☆
320	☆	☆	☆	☆	☆	☆
330	☆	☆	☆	☆	☆	☆
340	☆	☆	☆	☆	☆	☆
350	☆	☆	☆	☆	☆	☆
360	☆	☆	☆	☆	☆	☆
370	☆	☆	☆	☆	☆	☆
380	☆	☆	☆	☆	☆	☆
390	☆	☆	☆	☆	☆	☆
400	☆	☆	☆	☆	☆	☆
410	☆	☆	☆	☆	☆	☆
420	☆	☆	☆	☆	☆	☆
430	☆	☆	☆	☆	☆	☆
440	☆	☆	☆	☆	☆	☆
450	☆	☆	☆	☆	☆	☆
460	☆	☆	☆	☆	☆	☆
470	☆	☆	☆	☆	☆	☆
480	☆	☆	☆	☆	☆	☆
490	☆	☆	☆	☆	☆	☆
500	☆	☆	☆	☆	☆	☆
510	☆	☆	☆	☆	☆	☆
520	☆	☆	☆	☆	☆	☆
530	☆	☆	☆	☆	☆	☆
540	☆	☆	☆	☆	☆	☆
550	☆	☆	☆	☆	☆	☆
560	☆	☆	☆	☆	☆	☆
570	☆	☆	☆	☆	☆	☆
580	☆	☆	☆	☆	☆	☆
590	☆	☆	☆	☆	☆	☆
600	☆	☆	☆	☆	☆	☆
610	☆	☆	☆	☆	☆	☆
620	☆	☆	☆	☆	☆	☆
630	☆	☆	☆	☆	☆	☆
640	☆	☆	☆	☆	☆	☆
650	☆	☆	☆	☆	☆	☆
660	☆	☆	☆	☆	☆	☆
670	☆	☆	☆	☆	☆	☆
680	☆	☆	☆	☆	☆	☆
690	☆	☆	☆	☆	☆	☆
700	☆	☆	☆	☆	☆	☆
710	☆	☆	☆	☆	☆	☆
720	☆	☆	☆	☆	☆	☆
730	☆	☆	☆	☆	☆	☆
740	☆	☆	☆	☆	☆	☆
750	☆	☆	☆	☆	☆	☆
760	☆	☆	☆	☆	☆	☆
770	☆	☆	☆	☆	☆	☆
780	☆	☆	☆	☆	☆	☆
790	☆	☆	☆	☆	☆	☆
800	☆	☆	☆	☆	☆	☆
810	☆	☆	☆	☆	☆	☆
820	☆	☆	☆	☆	☆	☆
830	☆	☆	☆	☆	☆	☆
840	☆	☆	☆	☆	☆	☆
850	☆	☆	☆	☆	☆	☆
860	☆	☆	☆	☆	☆	☆
870	☆	☆	☆	☆	☆	☆
880	☆	☆	☆	☆	☆	☆
890	☆	☆	☆	☆	☆	☆
900	☆	☆	☆	☆	☆	☆
910	☆	☆	☆	☆	☆	☆
920	☆	☆	☆	☆	☆	☆
930	☆	☆	☆	☆	☆	☆
940	☆	☆	☆	☆	☆	☆
950	☆	☆	☆	☆	☆	☆
960	☆	☆	☆	☆	☆	☆
970	☆	☆	☆	☆	☆	☆
980	☆	☆	☆	☆	☆	☆
990	☆	☆	☆	☆	☆	☆
1000	☆	☆	☆	☆	☆	☆

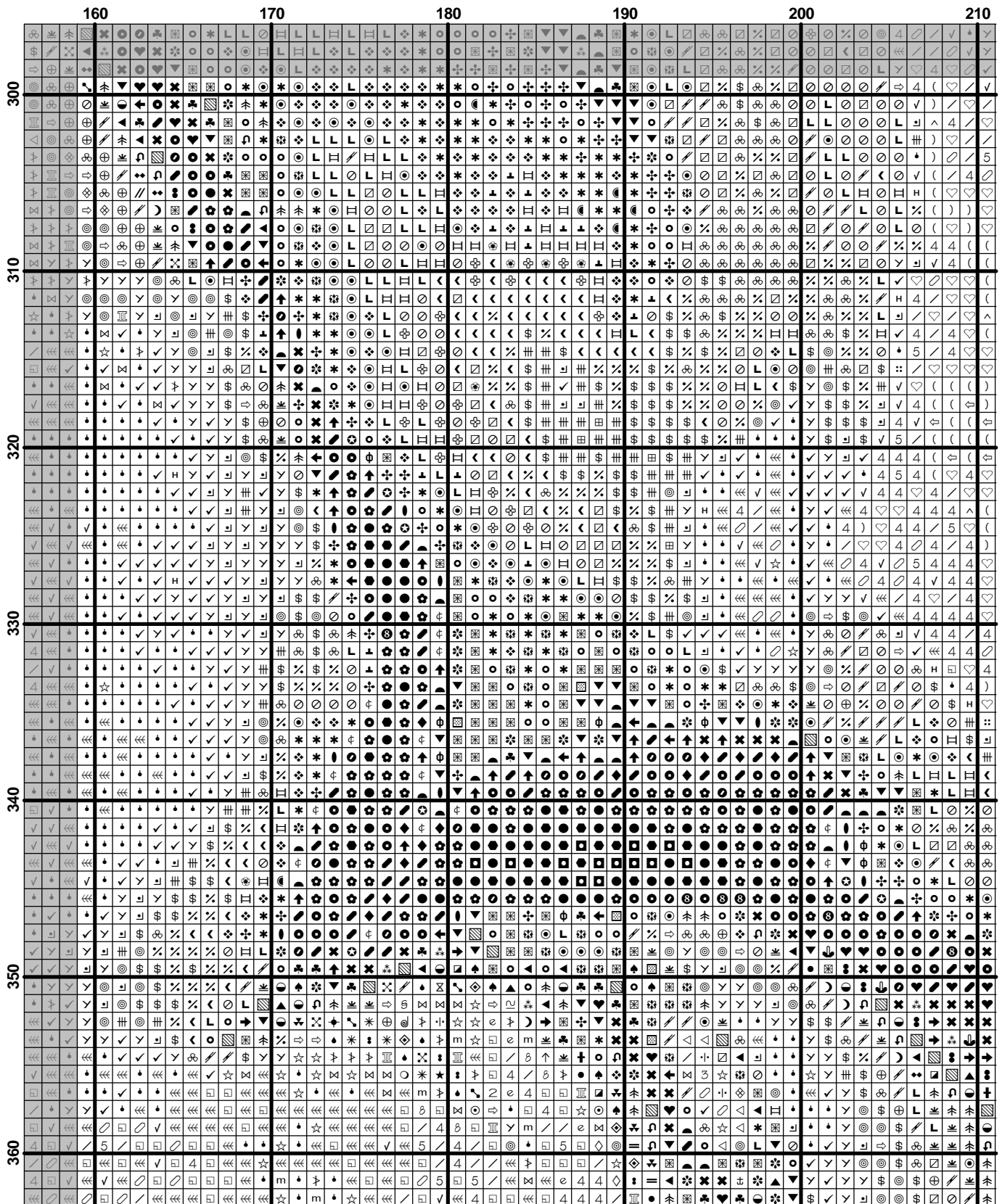
$$(29) \quad \frac{1}{\Gamma(\alpha)} \int_0^t (t-s)^{\alpha-1} f(s) ds = \frac{1}{\Gamma(\alpha)} \int_0^t (t-s)^{\alpha-1} f(s) ds + \frac{1}{\Gamma(\alpha)} \int_0^t (t-s)^{\alpha-1} f(s) ds$$











	210	220	230	240	250	260
300	✓	✓	✓	✓	✓	✓
310	✓	✓	✓	✓	✓	✓
320	✓	✓	✓	✓	✓	✓
330	✓	✓	✓	✓	✓	✓
340	✓	✓	✓	✓	✓	✓
350	✓	✓	✓	✓	✓	✓
360	✓	✓	✓	✓	✓	✓

