

1064 Safie one of the Three Ladies



This pattern may not be copied, sold or in any other way handled in any way that violates the international copyright laws. If you get hold of this pattern (and or this document) in any other way than via a direct download from www.goldenkite.com or via a mail from us, you should report that to us at legal_actions@goldenkite.com.

Copyright (c) 2007-, Golden Kite. All rights reserved.

Copyright (c) 2007-, Golden Kite (Golden K.)
Internet: www.goldenkite.com

e-mail: info@goldenkite.com

Instructions

Thank you for choosing Golden Kite products!
We hope you will have lots of fun with this cross-stitch pattern!

Fabric

Press the fabric with an iron if needed. A good thing to prevent the fabric from fraying is to machine zigzag the edges.

On large patterns, it is easiest to start from the upper left corner of the design. Make sure you have the proper margins before starting and that the fabric piece is of the correct size. The best way to verify this is to count all stitch positions on the fabric from the upper left corner downwards and to the right to make sure there is enough space for the design.

Some prefer to start in the center of the design instead. To locate the center of the fabric, fold the fabric in half both vertically and horizontally. The center is located where these two folds meet.

Stitches

Each length of DMC tread consists of six strands.
Use two of these strands for all stitches.

Note that some colors may be mixes (or blends) between two different pure colors. In that case take one strand of the two colors each and thread the two strands into the needle at the same time for stitching.

All stitches are full cross-stitches. No half-stitching and no back-stitching is necessary in this pattern.

All cross-stitches will be worked into the holes in the fabric from left to right. Always use the larger holes in the fabric for the stitches. Adjacent stitches should meet in the same hole. Make sure all stitches cross in the same direction.

Please be careful when washing the finished embroidery! The cotton thread may bleed when washed. Only hand wash it in lukewarm water. Remove excess water by roll it in a towel and lay it flat to air dry. Natural fabrics may shrink slightly when washed. We do not recommend washing the embroidery if not absolutely necessary and we take no responsibility for any damage that may occur.

When you start using this product you agree that Golden Kite (Golden K), or any people working for or in association with Golden Kite (Golden K), cannot be set responsible for any physical, mental, economical or other type of damage caused by this product (including this document, pattern, threads, needles and any other parts received by you from Golden Kite (Golden K)).

This pattern may not be copied, sold or in any other way handled in any way that violates the international copyright laws. If you get hold of this pattern (and or this document) in any other way than via a direct download from www.goldenkite.com or via a mail from us, you should report that to us at legal_actions@goldenkite.com .

Safie one of the Three Ladies																						
<table><tr><td colspan="2">Stitch Count</td></tr><tr><td>Horizontal:</td><td>400</td></tr><tr><td>Vertical:</td><td>564</td></tr></table>					Stitch Count		Horizontal:	400	Vertical:	564	<table><tr><td colspan="2">Recommended Fabric Color</td></tr><tr><td colspan="2">Antique White</td></tr></table>								Recommended Fabric Color		Antique White	
Stitch Count																						
Horizontal:	400																					
Vertical:	564																					
Recommended Fabric Color																						
Antique White																						
<p>This table tells the size of the pattern (without any margins) and the size of the fabric required to stitch the pattern (including recommended margins). 3 inch margins have been added on each side in the 'Including Margins' row.</p> <p>The sizes are given for 14, 16 and 18 stitches per inch fabrics.</p> <p>Make sure to use the 'Including Margins' row when cutting the piece of fabric to be used. Also make sure that 3 inch margins are enough for your stitching technique and add more margin areas if necessary.</p>																						
	14				16				18													
	Width		Height		Width		Height		Width		Height											
	cm	inch	cm	inch	cm	inch	cm	inch	cm	inch	cm	inch										
Pattern:	73	28.44	103	40.17	64	24.89	90	35.15	57	22.125	80	31.25										
Including Margins:	89	35	119	47	80	31	106	42	73	29	96	38										
	10				12				24													
	Width		Height		Width		Height		Width		Height											
	cm	inch	cm	inch	cm	inch	cm	inch	cm	inch	cm	inch										
Pattern:	102	39.81	144	56.23	85	33.18	120	46.86	42	16.59	60	23.43										
Including Margins:	118	46	160	63	101	40	136	53	58	23	76	30										
	25				26				27													
	Width		Height		Width		Height		Width		Height											
	cm	inch	cm	inch	cm	inch	cm	inch	cm	inch	cm	inch										
Pattern:	40	15.92	57	22.49	39	15.31	55	21.63	37	14.74	53	20.82										
Including Margins:	56	22	73	29	55	22	71	28	53	21	69	27										
	28				30				32													
	Width		Height		Width		Height		Width		Height											
	cm	inch	cm	inch	cm	inch	cm	inch	cm	inch	cm	inch										
Pattern:	36	14.22	51	20.08	34	13.27	48	18.74	31	12.44	45	17.57										
Including Margins:	52	21	67	27	50	20	64	25	47	19	61	24										

Solid Color Stitches. Use two strands of the specified color for these stitches.

Symbol	DMC	Name
■	310	Black
н	372	Mustard-LT
7	415	Pearl Gray
★	420	Hazelnut Brown-DK
5	422	Hazelnut Brown-LT
8	435	Brown-VY LT
×	436	Tan
	437	Tan-LT
●	500	Blue Green-VY DK
⊕	522	Fern Green
○	523	Fern Green-LT
::	524	Fern Green-VY LT
⊕	543	Beige Brown-UL VY LT
■	610	Drab Brown-DK
~	612	Drab Brown-LT
◇	613	Drab Brown-VY LT
φ	632	Desert Sand-UL VY DK
▲	642	Beige Gray-DK
∠	644	Beige Gray-MD
*	645	Beaver Gray-VY DK
▷	646	Beaver Gray-DK
#	647	Beaver Gray-MD
4	676	Old Gold-LT
o	712	Cream
∇	729	Old Gold-MD
⊕	734	Olive Green-LT
ρ	738	Tan-VY LT
=	739	Tan-UL VY LT
↑	745	Yellow-LT Pale
1	746	Off White
)	762	Pearl Gray-VY LT
▷	772	Yellow Green-VY LT
⌵	801	Coffee Brown-DK
L	822	Beige Gray-LT
↓	829	Golden Olive-VY DK
+	830	Golden Olive-DK
	833	Golden Olive-LT
■	839	Beige Brown-DK
◀	840	Beige Brown-MD

●	898	Coffee Brown-VY DK
◇	926	Gray Green-MD
⋈	927	Gray Green-LT
⋈	928	Gray Green-VY LT
⊗	938	Coffee Brown-UL DK
β	945	Tawny
	948	Peach-VY LT
>	951	Tawny-LT
⊗	966	Baby Green-MD
▼	975	Golden Brown-DK
o	3011	Khaki Green-DK
⊗	3012	Khaki Green-MD
**	3021	Brown Gray-VY DK
⊕	3023	Brown Gray-LT
g	3024	Brown Gray-VY LT
♥	3031	Mocha Brown-VY DK
τ	3032	Mocha Brown-MD
:	3033	Mocha Brown-VY LT
⋈	3045	Yellow Beige-DK
5	3046	Yellow Beige-MD
□	3047	Yellow Beige-LT
♣	3051	Green Gray-DK
⋈	3052	Green Gray-MD
⊕	3053	Green Gray
⇒	3072	Beaver Gray-VY LT
o	3078	Golden Yellow-VY LT
⋈	3363	Pine Green-MD
0	3753	Antique Blue-UL VY LT
~	3756	Baby Blue-UL VY LT
⋈	3781	Mocha Brown-DK
?	3782	Mocha Brown-LT
⊗	3787	Brown Gray-DK
∞	3823	Yellow-UL Pale
⋈	3828	Hazelnut Brown
♡	3855	Autumn Gold-LT
e	3856	Mahogany-UL VY LT
=	3860	Cocoa
*	3863	Mocha Beige-MD
⋈	3864	Mocha Beige-LT
u	3865	Winter White
.	3866	Mocha Brown-UL VY LT
⋈	Ecu	Ecu

Blend Stitches. Use one strand of each of DMC1 and DMC2 for these stitches.

Symbol	DMC1	Name1	DMC2	Name2
⋈	420	Hazelnut Brown-DK	3858	Rosewood-MD
●	610	Drab Brown-DK	839	Beige Brown-DK
ρ	3828	Hazelnut Brown	356	Terra Cotta-MD
n	746	Off White	3823	Yellow-UL Pale
5	356	Terra Cotta-MD	437	Tan-LT
⊗	356	Terra Cotta-MD	3830	Terra Cotta-MD
■	3787	Brown Gray-DK	3860	Cocoa

❖	640	Beige Gray-VY DK	3860	Cocoa
☯	535	Ash Gray-VY LT	3787	Brown Gray -DK
(3756	Baby Blue-UL VY LT	762	Pearl Gray-VY LT
✱	535	Ash Gray-VY LT	645	Beaver Gray-VY DK
◇	844	Beaver Brown-UL DK	3799	Pewter Gray-VY DK
†	844	Beaver Brown-UL DK	3362	Pine Green-DK
☾	3787	Brown Gray -DK	3790	Beige Gray-UL DK
▲	839	Beige Brown-DK	3362	Pine Green-DK
⊕	535	Ash Gray-VY LT	844	Beaver Brown-UL DK
◆	3021	Brown Gray-VY DK	3799	Pewter Gray-VY DK
▲	640	Beige Gray-VY DK	645	Beaver Gray-VY DK
▼	3362	Pine Green-DK	3787	Brown Gray -DK
▨	3362	Pine Green-DK	535	Ash Gray-VY LT
♠	632	Desert Sand-UL VY DK	3862	Mocha Beige-DK
♣	934	Black Avocado Green	935	Avocado Green-DK
☪	640	Beige Gray-VY DK	3052	Green Gray-MD
*	640	Beige Gray-VY DK	3362	Pine Green-DK
«	3865	Winter White	3756	Baby Blue-UL VY LT
☛	935	Avocado Green-DK	3799	Pewter Gray-VY DK
✕	611	Drab Brown	3862	Mocha Beige-DK
♫	3011	Khaki Green-DK	3787	Brown Gray -DK
≡	613	Drab Brown-VY LT	524	Fern Green-VY LT
▲	502	Blue Green	645	Beaver Gray-VY DK
☼	356	Terra Cotta-MD	436	Tan
⬆	435	Brown-VY LT	3830	Terra Cotta-MD
◀	356	Terra Cotta-MD	435	Brown-VY LT
◀	632	Desert Sand-UL VY DK	3790	Beige Gray-UL DK
6	613	Drab Brown-VY LT	369	Pistachio Green-VY LT
田	436	Tan	3828	Hazelnut Brown
♠	3363	Pine Green-MD	645	Beaver Gray-VY DK
m	738	Tan-VY LT	3013	Khaki Green-LT
↔	613	Drab Brown-VY LT	739	Tan-UL VY LT
⊕	370	Mustard-MD	3772	Desert Sand-VY DK
⊕	356	Terra Cotta-MD	3772	Desert Sand-VY DK
✦	3772	Desert Sand-VY DK	3862	Mocha Beige-DK
∩	370	Mustard-MD	3828	Hazelnut Brown
—	3864	Mocha Beige-LT	738	Tan-VY LT
◎	3032	Mocha Brown-MD	3052	Green Gray-MD
✦	839	Beige Brown-DK	3860	Cocoa
♠	3772	Desert Sand-VY DK	3828	Hazelnut Brown
z	435	Brown-VY LT	3828	Hazelnut Brown
☼	370	Mustard-MD	3862	Mocha Beige-DK
☛	640	Beige Gray-VY DK	3772	Desert Sand-VY DK
✓	3864	Mocha Beige-LT	407	Desert Sand-DK
≈	436	Tan	437	Tan-LT
z	3064	Desert Sand	437	Tan-LT
△	369	Pistachio Green-VY LT	3024	Brown Gray-VY LT
☛	898	Coffee Brown-VY DK	3781	Mocha Brown-DK
▲	3781	Mocha Brown-DK	3787	Brown Gray -DK
⊕	3032	Mocha Brown-MD	3862	Mocha Beige-DK
○	3046	Yellow Beige-MD	3078	Golden Yellow-VY LT
♠	3790	Beige Gray-UL DK	3862	Mocha Beige-DK
▨	3859	Rosewood-LT	3772	Desert Sand-VY DK
✕	612	Drab Brown-LT	372	Mustard-LT
☛	839	Beige Brown-DK	3858	Rosewood-MD
●	3371	Black Brown	3799	Pewter Gray-VY DK
≡	3053	Green Gray	522	Fern Green
≡	611	Drab Brown	640	Beige Gray-VY DK
¢	3021	Brown Gray-VY DK	535	Ash Gray-VY LT

Copyright (c) 2007-, Golden Kite (Golden K.)

Internet: www.goldenkite.com

e-mail: info@goldenkite.com

←	3787	Brown Gray -DK	3799	Pewter Gray -VY DK
⌘	3828	Hazelnut Brown	3859	Rosewood-LT
⓪	612	Drab Brown-LT	3859	Rosewood-LT
☾	3862	Mocha Beige-DK	840	Beige Brown-MD
+	739	Tan-UL VY LT	3046	Yellow Beige-MD
▀	3362	Pine Green-DK	3363	Pine Green-MD
▄	640	Beige Gray-VY DK	3363	Pine Green-MD
▧	3787	Brown Gray -DK	632	Desert Sand-UL VY DK
⚙	640	Beige Gray-VY DK	3011	Khaki Green-DK
⚙	3862	Mocha Beige-DK	3052	Green Gray-MD
⚙	3012	Khaki Green-MD	3032	Mocha Brown-MD
➔	3021	Brown Gray -VY DK	936	Avocado Green-VY DK
⌒	926	Gray Green-MD	640	Beige Gray-VY DK
⦿	3799	Pewter Gray -VY DK	934	Black Avocado Green
▶	844	Beaver Brown-UL DK	502	Blue Green
^	951	Tawny -LT	3823	Yellow -UL Pale
<	739	Tan-UL VY LT	745	Yellow -LT Pale
⌘	3046	Yellow Beige-MD	745	Yellow -LT Pale
//	3012	Khaki Green-MD	3862	Mocha Beige-DK
⌒	3052	Green Gray-MD	3859	Rosewood-LT
●	3011	Khaki Green-DK	3862	Mocha Beige-DK
↑	3013	Khaki Green-LT	3053	Green Gray
▣	934	Black Avocado Green	3371	Black Brown
✕	936	Avocado Green-VY DK	3799	Pewter Gray -VY DK
⦿	3052	Green Gray-MD	3828	Hazelnut Brown
⌒	3828	Hazelnut Brown	3045	Yellow Beige-DK
⦿	370	Mustard-MD	3045	Yellow Beige-DK
✱	3781	Mocha Brown-DK	610	Drab Brown-DK
⌒	436	Tan	3064	Desert Sand
✱	370	Mustard-MD	436	Tan
⦿	3830	Terra Cotta-MD	420	Hazelnut Brown-DK
∅	3772	Desert Sand-VY DK	435	Brown-VY LT
↑	3781	Mocha Brown-DK	838	Beige Brown-VY DK
⦿	371	Mustard	3053	Green Gray
⦿	370	Mustard-MD	612	Drab Brown-LT
..	3013	Khaki Green-LT	3064	Desert Sand
√	772	Yellow Green-VY LT	739	Tan-UL VY LT
□	966	Baby Green-MD	648	Beaver Gray-LT
3	3046	Yellow Beige-MD	738	Tan-VY LT
⌒	369	Pistachio Green-VY LT	524	Fern Green-VY LT
α	369	Pistachio Green-VY LT	966	Baby Green-MD
√	966	Baby Green-MD	415	Pearl Gray
/	369	Pistachio Green-VY LT	415	Pearl Gray
☆	524	Fern Green-VY LT	966	Baby Green-MD
▣	676	Old Gold-LT	437	Tan-LT
✕	926	Gray Green-MD	647	Beaver Gray-MD
⦿	3052	Green Gray-MD	522	Fern Green
✕	502	Blue Green	640	Beige Gray-VY DK
⌒	3823	Yellow -UL Pale	772	Yellow Green-VY LT
⦿	734	Olive Green-LT	437	Tan-LT
⦿	3858	Rosewood-MD	3862	Mocha Beige-DK
♦	420	Hazelnut Brown-DK	3862	Mocha Beige-DK
▲	3830	Terra Cotta-MD	3862	Mocha Beige-DK

This table specifies how much thread of each color is required to stitch this pattern. It is good to know that one complete DMC skein contains 313 inches (795 cm) thread.

DMC	Name	Usage (cm)	Usage (inch)	Usage (cm)	Usage (inch)	Usage (cm)	Usage (inch)
		14		16		18	
310	Black	135	53	129	50	116	45
356	Terra Cotta-MD	78	30	74	29	67	26
369	Pistachio Green-VY LT	858	337	817	321	735	289
370	Mustard-MD	499	196	476	187	428	168
371	Mustard	276	108	263	103	236	92
372	Mustard-LT	487	191	464	182	417	164
407	Desert Sand-DK	16	6	15	5	14	5
415	Pearl Gray	180	70	171	67	154	60
420	Hazelnut Brown-DK	72	28	68	26	61	24
422	Hazelnut Brown-LT	61	24	58	22	52	20
435	Brown-VY LT	75	29	72	28	64	25
436	Tan	254	100	242	95	217	85
437	Tan-LT	249	98	237	93	213	83
500	Blue Green-VY DK	248	97	237	93	213	83
502	Blue Green	994	391	946	372	852	335
522	Fern Green	1417	557	1350	531	1215	478
523	Fern Green-LT	702	276	668	262	601	236
524	Fern Green-VY LT	1379	542	1313	516	1182	465
535	Ash Gray -VY LT	2433	957	2317	912	2085	820
543	Beige Brown-UL VY LT	19	7	18	7	16	6
610	Drab Brown-DK	245	96	234	92	210	82
611	Drab Brown	237	93	226	88	203	79
612	Drab Brown-LT	689	271	656	258	591	232
613	Drab Brown-VY LT	798	314	760	299	684	269
632	Desert Sand-UL VY DK	235	92	224	88	201	79
640	Beige Gray-VY DK	3785	1490	3604	1418	3244	1277
642	Beige Gray-DK	854	336	814	320	732	288
644	Beige Gray-MD	55	21	52	20	47	18
645	Beaver Gray-VY DK	3012	1185	2868	1129	2581	1016
646	Beaver Gray-DK	897	353	854	336	769	302
647	Beaver Gray-MD	547	215	521	205	468	184
648	Beaver Gray-LT	75	29	72	28	64	25
676	Old Gold-LT	46	18	44	17	40	15
712	Cream	115	45	110	43	99	38
729	Old Gold- MD	24	9	23	9	21	8
734	Olive Green-LT	79	31	75	29	68	26
738	Tan-VY LT	560	220	533	209	480	188
739	Tan-UL VY LT	643	253	613	241	551	216
745	Yellow -LT Pale	189	74	180	70	162	63
746	Off White	287	112	274	107	246	96
762	Pearl Gray-VY LT	53	20	51	20	45	17
772	Yellow Green-VY LT	348	137	332	130	299	117
801	Coffee Brown-DK	15	5	14	5	13	5
822	Beige Gray-LT	79	31	75	29	67	26
829	Golden Olive-VY DK	22	8	21	8	19	7
830	Golden Olive-DK	40	15	38	14	34	13
833	Golden Olive-LT	30	11	28	11	25	9
838	Beige Brown-VY DK	27	10	26	10	23	9
839	Beige Brown-DK	701	275	668	262	601	236
840	Beige Brown-MD	123	48	117	46	105	41
844	Beaver Brown-UL DK	2187	861	2083	820	1875	738
898	Coffee Brown-VY DK	53	20	51	20	45	17
926	Gray Green-MD	362	142	344	135	310	122
927	Gray Green-LT	116	45	110	43	99	38

Copyright (c) 2007-, Golden Kite (Golden K.)

Internet: www.goldenkite.com

e-mail: info@goldenkite.com

928	Gray Green-VY LT	40	15	38	14	34	13
934	Black Avocado Green	1049	412	999	393	899	353
935	Avocado Green-DK	1142	449	1087	427	978	385
936	Avocado Green-VY DK	840	330	800	314	720	283
938	Coffee Brown-UL DK	81	31	77	30	69	27
945	Tawny	35	13	33	12	30	11
948	Peach-VY LT	13	5	12	4	11	4
951	Tawny -LT	75	29	71	27	64	25
966	Baby Green-MD	345	135	328	129	296	116
975	Golden Brown-DK	6	2	6	2	5	1
3011	Khaki Green-DK	837	329	797	313	717	282
3012	Khaki Green-MD	625	246	595	234	535	210
3013	Khaki Green-LT	472	185	450	177	405	159
3021	Brown Gray -VY DK	2371	933	2258	888	2032	800
3023	Brown Gray -LT	262	103	249	98	224	88
3024	Brown Gray -VY LT	218	85	208	81	187	73
3031	Mocha Brown-VY DK	387	152	368	144	331	130
3032	Mocha Brown-MD	2577	1014	2455	966	2209	869
3033	Mocha Brown-VY LT	27	10	26	10	23	9
3045	Yellow Beige-DK	290	114	276	108	248	97
3046	Yellow Beige-MD	435	171	415	163	373	146
3047	Yellow Beige-LT	79	31	75	29	67	26
3051	Green Gray-DK	218	85	207	81	186	73
3052	Green Gray-MD	2906	1144	2767	1089	2490	980
3053	Green Gray	1601	630	1525	600	1372	540
3064	Desert Sand	161	63	153	60	138	54
3072	Beaver Gray-VY LT	243	95	231	90	208	81
3078	Golden Yellow -VY LT	136	53	129	50	116	45
3362	Pine Green-DK	2656	1045	2529	995	2276	896
3363	Pine Green-MD	1097	431	1045	411	940	370
3371	Black Brown	672	264	640	251	576	226
3753	Antique Blue-UL VY LT	22	8	20	7	18	7
3756	Baby Blue-UL VY LT	76	29	72	28	65	25
3772	Desert Sand-VY DK	267	105	255	100	229	90
3781	Mocha Brown-DK	635	250	605	238	544	214
3782	Mocha Brown-LT	409	161	390	153	351	138
3787	Brown Gray -DK	3479	1369	3313	1304	2982	1174
3790	Beige Gray-UL DK	383	150	365	143	328	129
3799	Pewter Gray -VY DK	5033	1981	4793	1887	4314	1698
3823	Yellow -UL Pale	395	155	376	148	339	133
3828	Hazelnut Brown	490	192	467	183	420	165
3830	Terra Cotta-MD	71	27	68	26	61	24
3855	Autumn Gold-LT	13	5	12	4	11	4
3856	Mahogany-UL VY LT	16	6	15	5	14	5
3858	Rosewood-MD	164	64	156	61	140	55
3859	Rosewood-LT	241	94	229	90	206	81
3860	Cocoa	218	85	208	81	187	73
3862	Mocha Beige-DK	1068	420	1017	400	915	360
3863	Mocha Beige-MD	112	44	106	41	96	37
3864	Mocha Beige-LT	164	64	156	61	141	55
3865	Winter White	106	41	101	39	91	35
3866	Mocha Brown-UL VY LT	211	83	201	79	181	71
Ecrú	Ecrú	192	75	183	72	164	64

Extended thread usage table.							
DMC	Name	Usage (cm)	Usage (inch)	Usage (cm)	Usage (inch)	Usage (cm)	Usage (inch)
		10		12		24	
310	Black	209	81	174	68	87	34
356	Terra Cotta-MD	121	47	101	39	50	20
369	Pistachio Green-VY LT	1323	520	1103	434	551	217
370	Mustard-MD	770	302	642	252	321	126
371	Mustard	425	166	354	138	177	69
372	Mustard-LT	751	295	626	246	313	123
407	Desert Sand-DK	25	9	21	8	11	4
415	Pearl Gray	277	108	231	90	116	45
420	Hazelnut Brown-DK	110	43	92	36	46	18
422	Hazelnut Brown-LT	94	36	78	30	39	15
435	Brown-VY LT	115	45	96	38	48	19
436	Tan	391	153	326	128	163	64
437	Tan-LT	383	149	320	125	160	62
500	Blue Green-VY DK	383	149	320	125	160	62
502	Blue Green	1534	603	1278	503	639	251
522	Fern Green	2187	860	1823	717	911	359
523	Fern Green-LT	1082	425	902	354	451	177
524	Fern Green-VY LT	2128	837	1773	698	887	349
535	Ash Gray-VY LT	3753	1476	3128	1230	1564	615
543	Beige Brown-UL VY LT	29	11	24	9	12	5
610	Drab Brown-DK	378	148	315	123	158	62
611	Drab Brown	365	142	305	119	152	59
612	Drab Brown-LT	1064	418	887	348	443	174
613	Drab Brown-VY LT	1231	484	1026	404	513	202
632	Desert Sand-UL VY DK	362	142	302	119	151	59
640	Beige Gray-VY DK	5839	2299	4866	1916	2433	958
642	Beige Gray-DK	1318	518	1098	432	549	216
644	Beige Gray-MD	85	32	71	27	35	14
645	Beaver Gray-VY DK	4646	1829	3872	1524	1936	762
646	Beaver Gray-DK	1384	544	1154	453	577	227
647	Beaver Gray-MD	842	331	702	276	351	138
648	Beaver Gray-LT	115	45	96	38	48	19
676	Old Gold-LT	72	27	60	23	30	11
712	Cream	178	68	149	57	74	29
729	Old Gold-MD	38	14	32	12	16	6
734	Olive Green-LT	122	47	102	39	51	20
738	Tan-VY LT	864	338	720	282	360	141
739	Tan-UL VY LT	992	389	827	324	413	162
745	Yellow-LT Pale	292	113	243	95	122	47
746	Off White	443	173	369	144	185	72
762	Pearl Gray-VY LT	81	31	68	26	34	13
772	Yellow Green-VY LT	538	211	449	176	224	88
801	Coffee Brown-DK	23	9	20	8	10	4
822	Beige Gray-LT	121	47	101	39	50	20
829	Golden Olive-VY DK	34	13	29	11	14	5
830	Golden Olive-DK	61	23	51	20	26	10
833	Golden Olive-LT	45	16	38	14	19	7
838	Beige Brown-VY DK	41	16	35	14	17	7
839	Beige Brown-DK	1082	425	902	354	451	177
840	Beige Brown-MD	189	74	158	62	79	31
844	Beaver Brown-UL DK	3375	1328	2813	1107	1406	554
898	Coffee Brown-VY DK	81	31	68	26	34	13
926	Gray Green-MD	558	220	465	183	233	92

927	Gray Green-LT	178	68	149	57	74	29
928	Gray Green-VY LT	61	23	51	20	26	10
934	Black Avocado Green	1618	635	1349	530	674	265
935	Avocado Green-DK	1760	693	1467	578	734	289
936	Avocado Green-VY DK	1296	509	1080	425	540	212
938	Coffee Brown-UL DK	124	49	104	41	52	20
945	Tawny	54	20	45	17	23	8
948	Peach-VY LT	20	7	17	6	8	3
951	Tawny -LT	115	45	96	38	48	19
966	Baby Green-MD	533	209	444	174	222	87
975	Golden Brown-DK	9	2	8	2	4	1
3011	Khaki Green-DK	1291	508	1076	423	538	212
3012	Khaki Green-MD	963	378	803	315	401	158
3013	Khaki Green-LT	729	286	608	239	304	119
3021	Brown Gray -VY DK	3658	1440	3048	1200	1524	600
3023	Brown Gray -LT	403	158	336	132	168	66
3024	Brown Gray -VY LT	337	131	281	110	140	55
3031	Mocha Brown-VY DK	596	234	497	195	248	98
3032	Mocha Brown-MD	3976	1564	3314	1304	1657	652
3033	Mocha Brown-VY LT	41	16	35	14	17	7
3045	Yellow Beige-DK	446	175	372	146	186	73
3046	Yellow Beige-MD	671	263	560	219	280	110
3047	Yellow Beige-LT	121	47	101	39	50	20
3051	Green Gray-DK	335	131	279	110	140	55
3052	Green Gray-MD	4482	1764	3735	1470	1868	735
3053	Green Gray	2470	972	2058	810	1029	405
3064	Desert Sand	248	97	207	81	104	41
3072	Beaver Gray-VY LT	374	146	312	122	156	61
3078	Golden Yellow -VY LT	209	81	174	68	87	34
3362	Pine Green-DK	4097	1613	3414	1344	1707	672
3363	Pine Green-MD	1692	666	1410	555	705	278
3371	Black Brown	1037	407	864	339	432	170
3753	Antique Blue-UL VY LT	32	13	27	11	14	5
3756	Baby Blue-UL VY LT	117	45	98	38	49	19
3772	Desert Sand-VY DK	412	162	344	135	172	68
3781	Mocha Brown-DK	979	385	816	321	408	161
3782	Mocha Brown-LT	632	248	527	207	263	104
3787	Brown Gray -DK	5368	2113	4473	1761	2237	881
3790	Beige Gray-UL DK	590	232	492	194	246	97
3799	Pewter Gray -VY DK	7765	3056	6471	2547	3236	1274
3823	Yellow -UL Pale	610	239	509	200	254	100
3828	Hazelnut Brown	756	297	630	248	315	124
3830	Terra Cotta-MD	110	43	92	36	46	18
3855	Autumn Gold-LT	20	7	17	6	8	3
3856	Mahogany-UL VY LT	25	9	21	8	11	4
3858	Rosewood-MD	252	99	210	83	105	41
3859	Rosewood-LT	371	146	309	122	155	61
3860	Cocoa	337	131	281	110	140	55
3862	Mocha Beige-DK	1647	648	1373	540	686	270
3863	Mocha Beige-MD	173	67	144	56	72	28
3864	Mocha Beige-LT	254	99	212	83	106	41
3865	Winter White	164	63	137	53	68	26
3866	Mocha Brown-UL VY LT	326	128	272	107	136	53
Ecrú	Ecrú	295	115	246	96	123	48

Extended thread usage table.							
DMC	Name	Usage (cm)	Usage (inch)	Usage (cm)	Usage (inch)	Usage (cm)	Usage (inch)
		25		26		27	
310	Black	84	32	80	31	77	30
356	Terra Cotta-MD	48	19	46	18	45	17
369	Pistachio Green-VY LT	529	208	509	200	490	193
370	Mustard-MD	308	121	296	116	285	112
371	Mustard	170	66	163	64	157	61
372	Mustard-LT	300	118	289	114	278	109
407	Desert Sand-DK	10	4	10	3	9	3
415	Pearl Gray	111	43	107	42	103	40
420	Hazelnut Brown-DK	44	17	42	17	41	16
422	Hazelnut Brown-LT	37	14	36	14	35	13
435	Brown-VY LT	46	18	44	17	43	17
436	Tan	156	61	150	59	145	57
437	Tan-LT	153	60	147	57	142	55
500	Blue Green-VY DK	153	60	147	57	142	55
502	Blue Green	613	241	590	232	568	223
522	Fern Green	875	344	841	331	810	319
523	Fern Green-LT	433	170	416	163	401	157
524	Fern Green-VY LT	851	335	818	322	788	310
535	Ash Gray-VY LT	1501	590	1443	568	1390	547
543	Beige Brown-UL VY LT	12	4	11	4	11	4
610	Drab Brown-DK	151	59	145	57	140	55
611	Drab Brown	146	57	141	55	135	53
612	Drab Brown-LT	426	167	409	161	394	155
613	Drab Brown-VY LT	492	194	474	186	456	179
632	Desert Sand-UL VY DK	145	57	139	55	134	53
640	Beige Gray-VY DK	2336	919	2246	884	2163	851
642	Beige Gray-DK	527	207	507	199	488	192
644	Beige Gray-MD	34	13	33	12	31	12
645	Beaver Gray-VY DK	1858	732	1787	703	1721	677
646	Beaver Gray-DK	554	217	532	209	513	201
647	Beaver Gray-MD	337	132	324	127	312	123
648	Beaver Gray-LT	46	18	44	17	43	17
676	Old Gold-LT	29	11	28	10	27	10
712	Cream	71	27	69	26	66	25
729	Old Gold-MD	15	6	15	6	14	5
734	Olive Green-LT	49	19	47	18	45	17
738	Tan-VY LT	346	135	332	130	320	125
739	Tan-UL VY LT	397	156	381	150	367	144
745	Yellow-LT Pale	117	45	112	44	108	42
746	Off White	177	69	170	66	164	64
762	Pearl Gray-VY LT	32	12	31	12	30	11
772	Yellow Green-VY LT	215	84	207	81	199	78
801	Coffee Brown-DK	9	4	9	3	9	3
822	Beige Gray-LT	48	19	46	18	45	17
829	Golden Olive-VY DK	14	5	13	5	13	5
830	Golden Olive-DK	24	9	24	9	23	9
833	Golden Olive-LT	18	6	17	6	17	6
838	Beige Brown-VY DK	17	6	16	6	15	6
839	Beige Brown-DK	433	170	416	163	401	157
840	Beige Brown-MD	76	30	73	28	70	27
844	Beaver Brown-UL DK	1350	531	1298	511	1250	492
898	Coffee Brown-VY DK	32	12	31	12	30	11
926	Gray Green-MD	223	88	215	84	207	81

927	Gray Green-LT	71	27	69	26	66	25
928	Gray Green-VY LT	24	9	24	9	23	9
934	Black Avocado Green	647	254	622	244	599	235
935	Avocado Green-DK	704	277	677	267	652	257
936	Avocado Green-VY DK	518	204	498	196	480	189
938	Coffee Brown-UL DK	50	19	48	19	46	18
945	Tawny	22	8	21	8	20	7
948	Peach-VY LT	8	3	8	3	7	3
951	Tawny -LT	46	18	44	17	43	17
966	Baby Green-MD	213	84	205	80	197	77
975	Golden Brown-DK	4	1	3	1	3	1
3011	Khaki Green-DK	516	203	496	195	478	188
3012	Khaki Green-MD	385	151	370	145	357	140
3013	Khaki Green-LT	292	114	280	110	270	106
3021	Brown Gray -VY DK	1463	576	1407	554	1355	533
3023	Brown Gray -LT	161	63	155	61	149	59
3024	Brown Gray -VY LT	135	53	129	51	125	49
3031	Mocha Brown-VY DK	238	94	229	90	221	87
3032	Mocha Brown-MD	1590	626	1529	602	1473	579
3033	Mocha Brown-VY LT	17	6	16	6	15	6
3045	Yellow Beige-DK	179	70	172	67	165	65
3046	Yellow Beige-MD	269	105	258	101	249	97
3047	Yellow Beige-LT	48	19	46	18	45	17
3051	Green Gray-DK	134	53	129	51	124	49
3052	Green Gray-MD	1793	706	1724	678	1660	653
3053	Green Gray	988	389	950	374	915	360
3064	Desert Sand	99	39	96	37	92	36
3072	Beaver Gray-VY LT	150	58	144	56	139	54
3078	Golden Yellow -VY LT	84	32	80	31	77	30
3362	Pine Green-DK	1639	645	1576	620	1517	597
3363	Pine Green-MD	677	266	651	256	627	247
3371	Black Brown	415	163	399	156	384	151
3753	Antique Blue-UL VY LT	13	5	12	5	12	5
3756	Baby Blue-UL VY LT	47	18	45	17	43	17
3772	Desert Sand-VY DK	165	65	159	62	153	60
3781	Mocha Brown-DK	392	154	377	148	363	143
3782	Mocha Brown-LT	253	99	243	96	234	92
3787	Brown Gray -DK	2147	845	2064	813	1988	783
3790	Beige Gray-UL DK	236	93	227	89	219	86
3799	Pewter Gray -VY DK	3106	1223	2987	1176	2876	1132
3823	Yellow -UL Pale	244	96	235	92	226	89
3828	Hazelnut Brown	302	119	291	114	280	110
3830	Terra Cotta-MD	44	17	42	17	41	16
3855	Autumn Gold-LT	8	3	8	3	7	3
3856	Mahogany-UL VY LT	10	4	10	3	9	3
3858	Rosewood-MD	101	40	97	38	93	37
3859	Rosewood-LT	148	58	143	56	137	54
3860	Cocoa	135	53	129	51	125	49
3862	Mocha Beige-DK	659	259	633	249	610	240
3863	Mocha Beige-MD	69	27	66	26	64	25
3864	Mocha Beige-LT	102	40	98	38	94	37
3865	Winter White	66	25	63	24	61	23
3866	Mocha Brown-UL VY LT	130	51	125	49	121	47
Ecrú	Ecrú	118	46	114	44	109	43

Extended thread usage table.

DMC	Name	Usage (cm)	Usage (inch)	Usage (cm)	Usage (inch)	Usage (cm)	Usage (inch)
		28		30		32	
310	Black	75	29	70	27	65	25
356	Terra Cotta-MD	43	17	40	16	38	15
369	Pistachio Green-VY LT	473	186	441	173	413	163
370	Mustard-MD	275	108	257	101	241	95
371	Mustard	152	59	142	55	133	52
372	Mustard-LT	268	105	250	98	235	92
407	Desert Sand-DK	9	3	8	3	8	3
415	Pearl Gray	99	39	92	36	87	34
420	Hazelnut Brown-DK	39	15	37	14	34	14
422	Hazelnut Brown-LT	33	13	31	12	29	11
435	Brown-VY LT	41	16	38	15	36	14
436	Tan	140	55	130	51	122	48
437	Tan-LT	137	53	128	50	120	47
500	Blue Green-VY DK	137	53	128	50	120	47
502	Blue Green	548	215	511	201	479	188
522	Fern Green	781	307	729	287	683	269
523	Fern Green-LT	386	152	361	142	338	133
524	Fern Green-VY LT	760	299	709	279	665	262
535	Ash Gray -VY LT	1340	527	1251	492	1173	461
543	Beige Brown-UL VY LT	10	4	10	4	9	3
610	Drab Brown-DK	135	53	126	49	118	46
611	Drab Brown	131	51	122	47	114	44
612	Drab Brown-LT	380	149	355	139	332	131
613	Drab Brown-VY LT	440	173	410	161	385	151
632	Desert Sand-UL VY DK	129	51	121	47	113	44
640	Beige Gray-VY DK	2085	821	1946	766	1825	718
642	Beige Gray-DK	471	185	439	173	412	162
644	Beige Gray-MD	30	12	28	11	26	10
645	Beaver Gray-VY DK	1659	653	1549	610	1452	572
646	Beaver Gray-DK	494	194	461	181	433	170
647	Beaver Gray-MD	301	118	281	110	263	104
648	Beaver Gray-LT	41	16	38	15	36	14
676	Old Gold-LT	26	10	24	9	23	8
712	Cream	64	24	59	23	56	21
729	Old Gold- MD	14	5	13	5	12	5
734	Olive Green-LT	44	17	41	16	38	15
738	Tan-VY LT	309	121	288	113	270	106
739	Tan-UL VY LT	354	139	331	130	310	122
745	Yellow -LT Pale	104	41	97	38	91	35
746	Off White	158	62	148	58	138	54
762	Pearl Gray-VY LT	29	11	27	10	25	10
772	Yellow Green-VY LT	192	75	179	70	168	66
801	Coffee Brown-DK	8	3	8	3	7	3
822	Beige Gray-LT	43	17	40	16	38	15
829	Golden Olive-VY DK	12	5	11	4	11	4
830	Golden Olive-DK	22	8	20	8	19	7
833	Golden Olive-LT	16	6	15	5	14	5
838	Beige Brown-VY DK	15	6	14	5	13	5
839	Beige Brown-DK	386	152	361	142	338	133
840	Beige Brown-MD	68	26	63	25	59	23
844	Beaver Brown-UL DK	1205	474	1125	443	1055	415
898	Coffee Brown-VY DK	29	11	27	10	25	10
926	Gray Green-MD	199	78	186	73	174	69
927	Gray Green-LT	64	24	59	23	56	21

Copyright (c) 2007-, Golden Kite (Golden K.)

Internet: www.goldenkite.come-mail: info@goldenkite.com

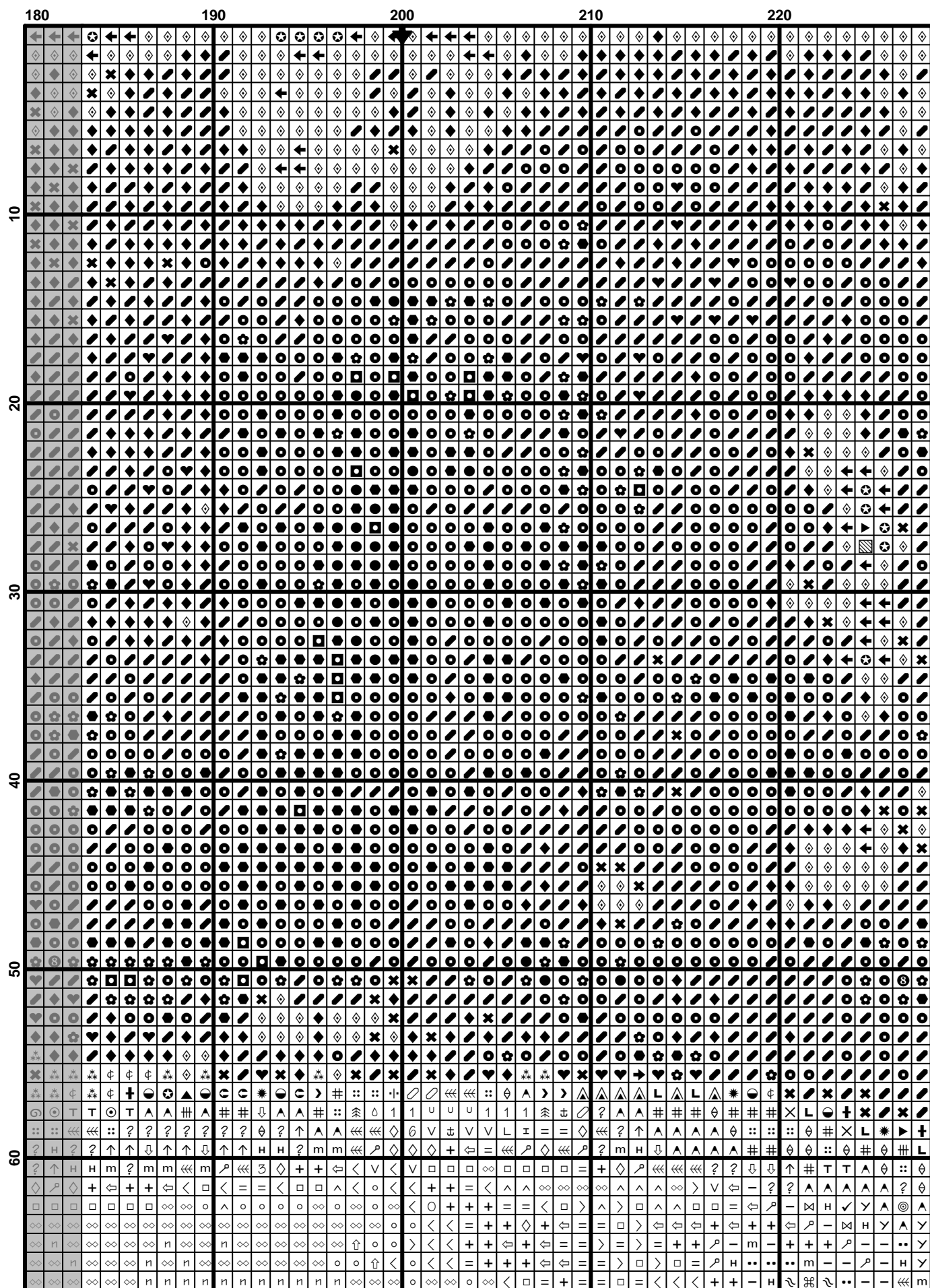
928	Gray Green-VY LT	22	8	20	8	19	7
934	Black Avocado Green	578	227	539	212	506	199
935	Avocado Green-DK	629	248	587	231	550	217
936	Avocado Green-VY DK	463	182	432	170	405	159
938	Coffee Brown-UL DK	44	17	41	16	39	15
945	Tawny	19	7	18	7	17	6
948	Peach-VY LT	7	3	7	2	6	2
951	Tawny -LT	41	16	38	15	36	14
966	Baby Green-MD	190	75	178	70	167	65
975	Golden Brown-DK	3	1	3	1	3	1
3011	Khaki Green-DK	461	181	430	169	403	159
3012	Khaki Green-MD	344	135	321	126	301	118
3013	Khaki Green-LT	260	102	243	95	228	89
3021	Brown Gray -VY DK	1306	514	1219	480	1143	450
3023	Brown Gray -LT	144	57	134	53	126	50
3024	Brown Gray -VY LT	120	47	112	44	105	41
3031	Mocha Brown-VY DK	213	84	199	78	186	73
3032	Mocha Brown-MD	1420	559	1325	521	1243	489
3033	Mocha Brown-VY LT	15	6	14	5	13	5
3045	Yellow Beige-DK	159	62	149	58	140	55
3046	Yellow Beige-MD	240	94	224	88	210	82
3047	Yellow Beige-LT	43	17	40	16	38	15
3051	Green Gray-DK	120	47	112	44	105	41
3052	Green Gray-MD	1601	630	1494	588	1401	551
3053	Green Gray	882	347	823	324	772	304
3064	Desert Sand	89	35	83	32	78	30
3072	Beaver Gray-VY LT	134	52	125	49	117	46
3078	Golden Yellow -VY LT	75	29	70	27	65	25
3362	Pine Green-DK	1463	576	1366	538	1280	504
3363	Pine Green-MD	604	238	564	222	529	208
3371	Black Brown	370	145	346	136	324	127
3753	Antique Blue-UL VY LT	12	5	11	4	10	4
3756	Baby Blue-UL VY LT	42	16	39	15	37	14
3772	Desert Sand-VY DK	147	58	137	54	129	51
3781	Mocha Brown-DK	350	138	326	128	306	120
3782	Mocha Brown-LT	226	89	211	83	197	78
3787	Brown Gray -DK	1917	755	1789	704	1677	660
3790	Beige Gray-UL DK	211	83	197	77	185	73
3799	Pewter Gray -VY DK	2773	1092	2588	1019	2427	955
3823	Yellow -UL Pale	218	86	203	80	191	75
3828	Hazelnut Brown	270	106	252	99	236	93
3830	Terra Cotta-MD	39	15	37	14	34	14
3855	Autumn Gold-LT	7	3	7	2	6	2
3856	Mahogany-UL VY LT	9	3	8	3	8	3
3858	Rosewood-MD	90	35	84	33	79	31
3859	Rosewood-LT	132	52	124	49	116	46
3860	Cocoa	120	47	112	44	105	41
3862	Mocha Beige-DK	588	231	549	216	515	203
3863	Mocha Beige-MD	62	24	58	22	54	21
3864	Mocha Beige-LT	91	35	85	33	79	31
3865	Winter White	59	23	55	21	51	20
3866	Mocha Brown-UL VY LT	116	46	109	43	102	40
Ecu	Ecu	105	41	98	38	92	36

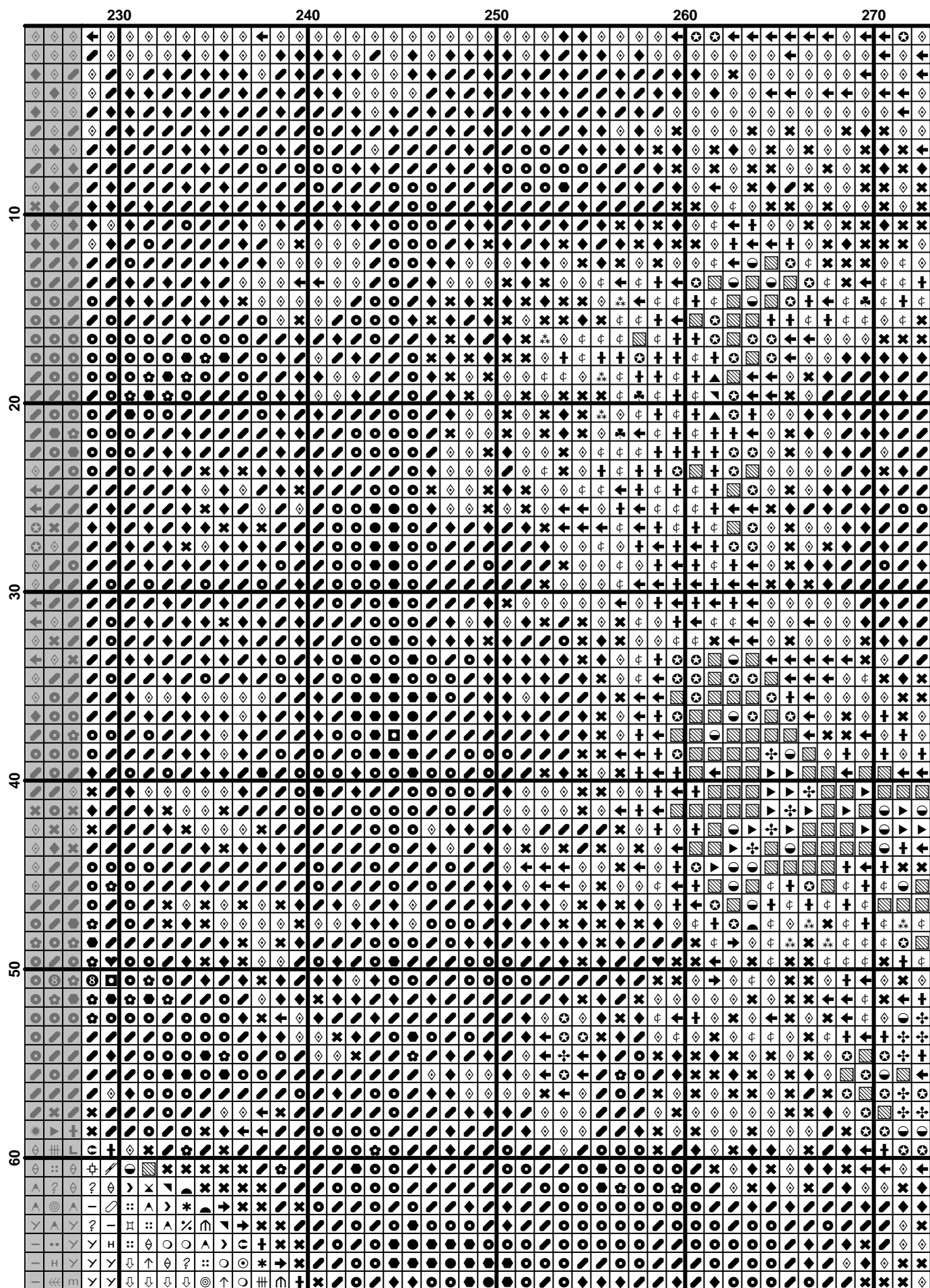
$$(10) \quad \frac{1}{\Gamma(\alpha)} \int_0^t (t-s)^{\alpha-1} f(s) ds = \frac{1}{\Gamma(\alpha)} \int_0^t (t-s)^{\alpha-1} g(s) ds + \frac{1}{\Gamma(\alpha)} \int_0^t (t-s)^{\alpha-1} h(s) ds$$

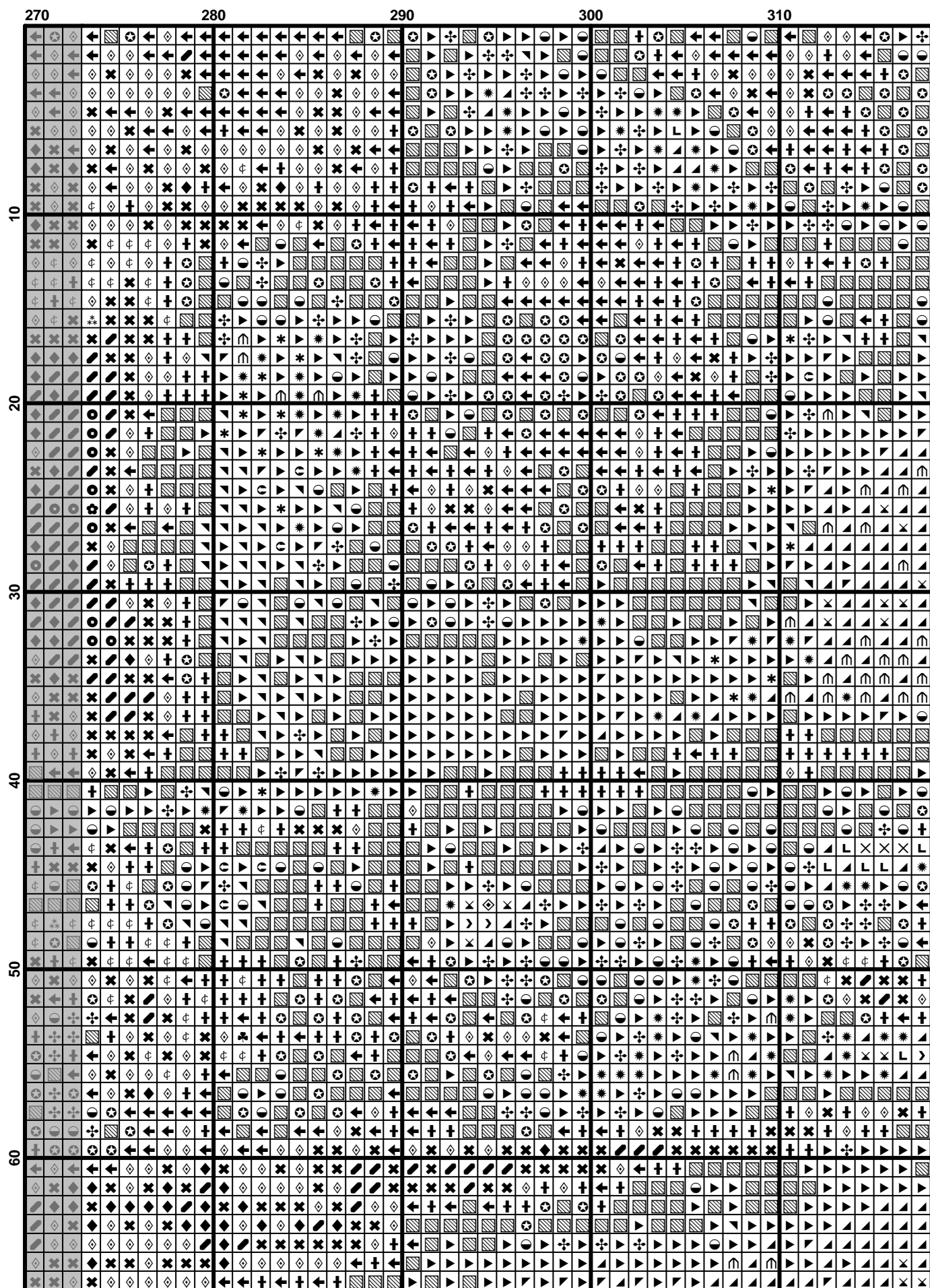
[illegible]



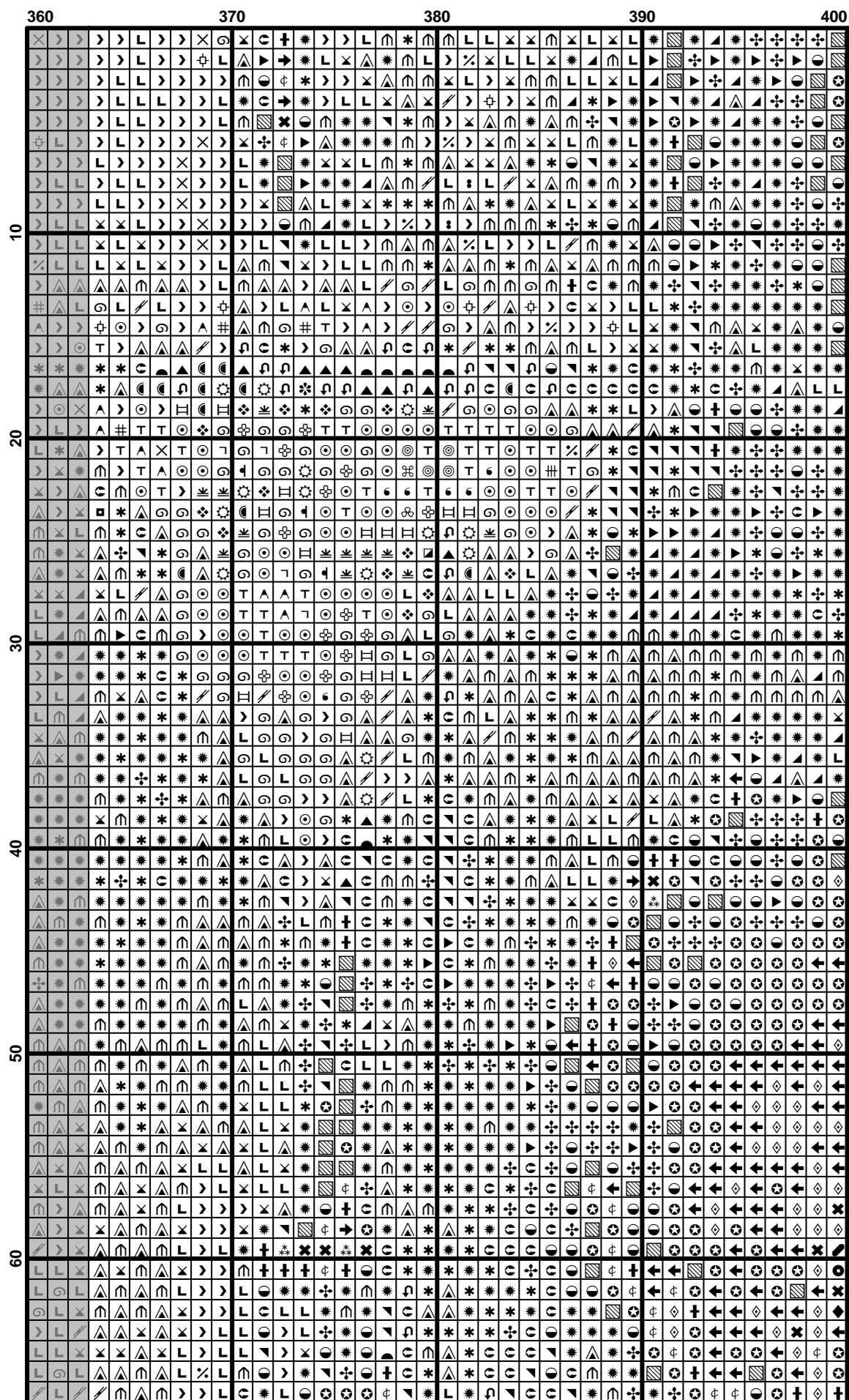








	320	330	340	350	360
10
20
30
40
50
60



	10	20	30	40
70				
80				
90				
100				
110				
120				
130				

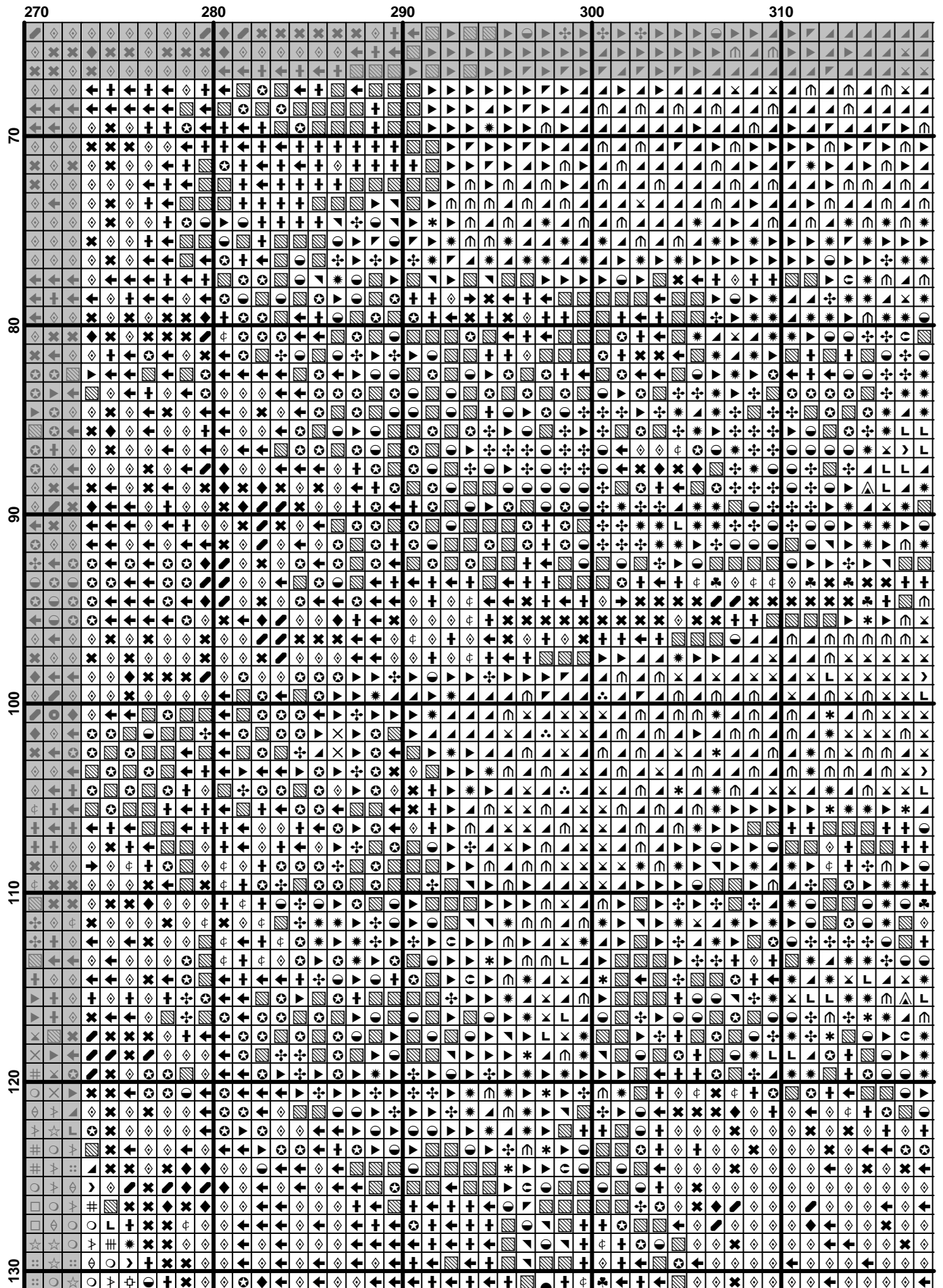
[illegible]

90	100	110	120	130
70				
80				
90				
100				
110				
120				
130				

	140	150	160	170	180
70
80
90
100
110
120
130

	180	190	200	210	220
70					
80					
90					
100					
110					
120					
130					

	230	240	250	260	270
70
80
90
100
110
120
130



$$(26) \quad \mathcal{L}(\mathcal{A}) = \mathcal{L}(\mathcal{B}) \quad (27)$$

(27)

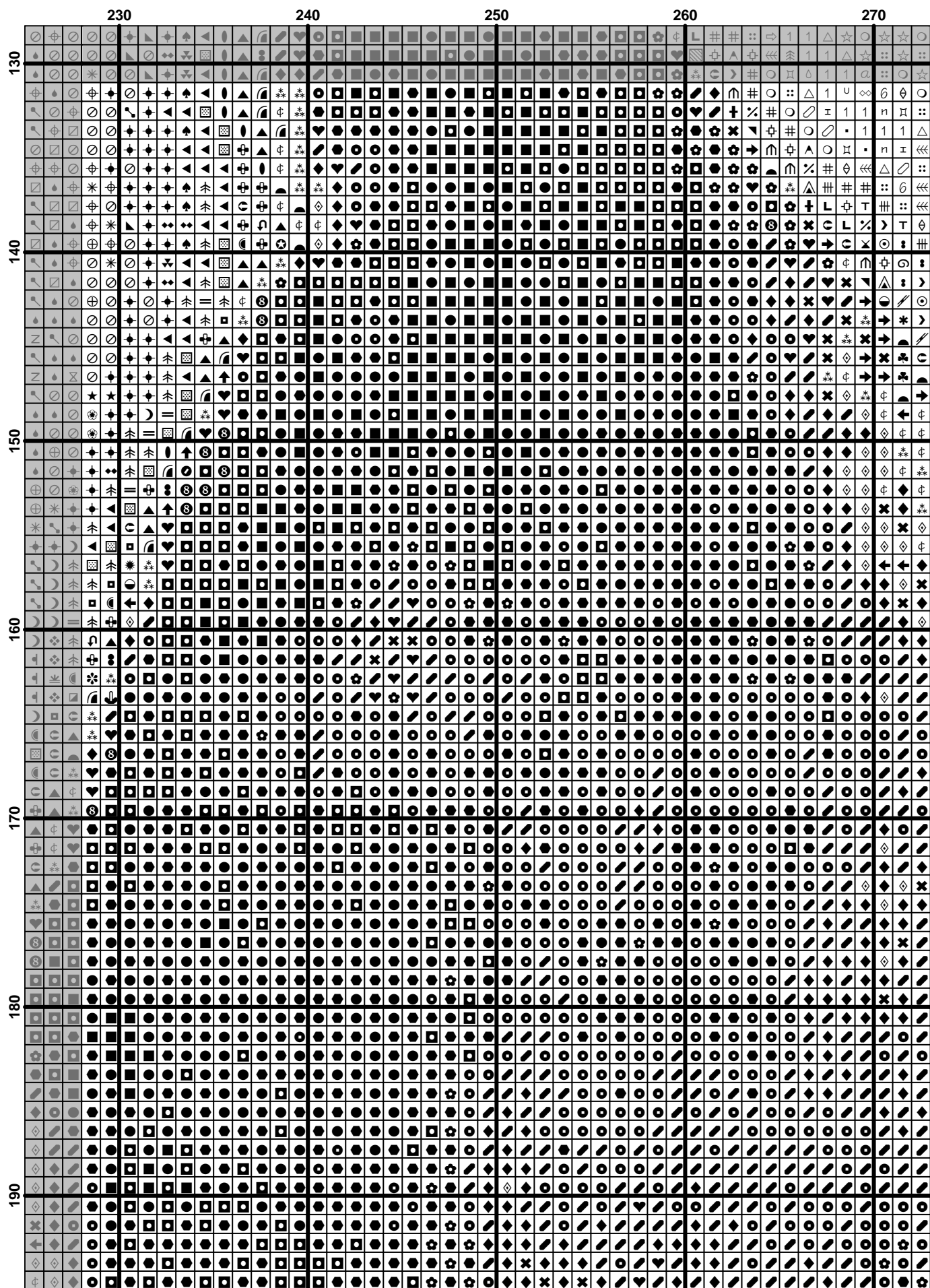
[illegible]

	50	60	70	80	90
130	⚡	⚡	⚡	⚡	⚡
131	⚡	⚡	⚡	⚡	⚡
132	⚡	⚡	⚡	⚡	⚡
133	⚡	⚡	⚡	⚡	⚡
134	⚡	⚡	⚡	⚡	⚡
135	⚡	⚡	⚡	⚡	⚡
136	⚡	⚡	⚡	⚡	⚡
137	⚡	⚡	⚡	⚡	⚡
138	⚡	⚡	⚡	⚡	⚡
139	⚡	⚡	⚡	⚡	⚡
140	⚡	⚡	⚡	⚡	⚡
141	⚡	⚡	⚡	⚡	⚡
142	⚡	⚡	⚡	⚡	⚡
143	⚡	⚡	⚡	⚡	⚡
144	⚡	⚡	⚡	⚡	⚡
145	⚡	⚡	⚡	⚡	⚡
146	⚡	⚡	⚡	⚡	⚡
147	⚡	⚡	⚡	⚡	⚡
148	⚡	⚡	⚡	⚡	⚡
149	⚡	⚡	⚡	⚡	⚡
150	⚡	⚡	⚡	⚡	⚡
151	⚡	⚡	⚡	⚡	⚡
152	⚡	⚡	⚡	⚡	⚡
153	⚡	⚡	⚡	⚡	⚡
154	⚡	⚡	⚡	⚡	⚡
155	⚡	⚡	⚡	⚡	⚡
156	⚡	⚡	⚡	⚡	⚡
157	⚡	⚡	⚡	⚡	⚡
158	⚡	⚡	⚡	⚡	⚡
159	⚡	⚡	⚡	⚡	⚡
160	⚡	⚡	⚡	⚡	⚡
161	⚡	⚡	⚡	⚡	⚡
162	⚡	⚡	⚡	⚡	⚡
163	⚡	⚡	⚡	⚡	⚡
164	⚡	⚡	⚡	⚡	⚡
165	⚡	⚡	⚡	⚡	⚡
166	⚡	⚡	⚡	⚡	⚡
167	⚡	⚡	⚡	⚡	⚡
168	⚡	⚡	⚡	⚡	⚡
169	⚡	⚡	⚡	⚡	⚡
170	⚡	⚡	⚡	⚡	⚡
171	⚡	⚡	⚡	⚡	⚡
172	⚡	⚡	⚡	⚡	⚡
173	⚡	⚡	⚡	⚡	⚡
174	⚡	⚡	⚡	⚡	⚡
175	⚡	⚡	⚡	⚡	⚡
176	⚡	⚡	⚡	⚡	⚡
177	⚡	⚡	⚡	⚡	⚡
178	⚡	⚡	⚡	⚡	⚡
179	⚡	⚡	⚡	⚡	⚡
180	⚡	⚡	⚡	⚡	⚡
181	⚡	⚡	⚡	⚡	⚡
182	⚡	⚡	⚡	⚡	⚡
183	⚡	⚡	⚡	⚡	⚡
184	⚡	⚡	⚡	⚡	⚡
185	⚡	⚡	⚡	⚡	⚡
186	⚡	⚡	⚡	⚡	⚡
187	⚡	⚡	⚡	⚡	⚡
188	⚡	⚡	⚡	⚡	⚡
189	⚡	⚡	⚡	⚡	⚡
190	⚡	⚡	⚡	⚡	⚡

	90	100	110	120	130
130
140
150
160
170
180
190

	140	150	160	170	180
130					
140					
150					
160					
170					
180					
190					

[illegible]



[illegible]

(36)

	10	20	30	40
200
210
220
230
240
250

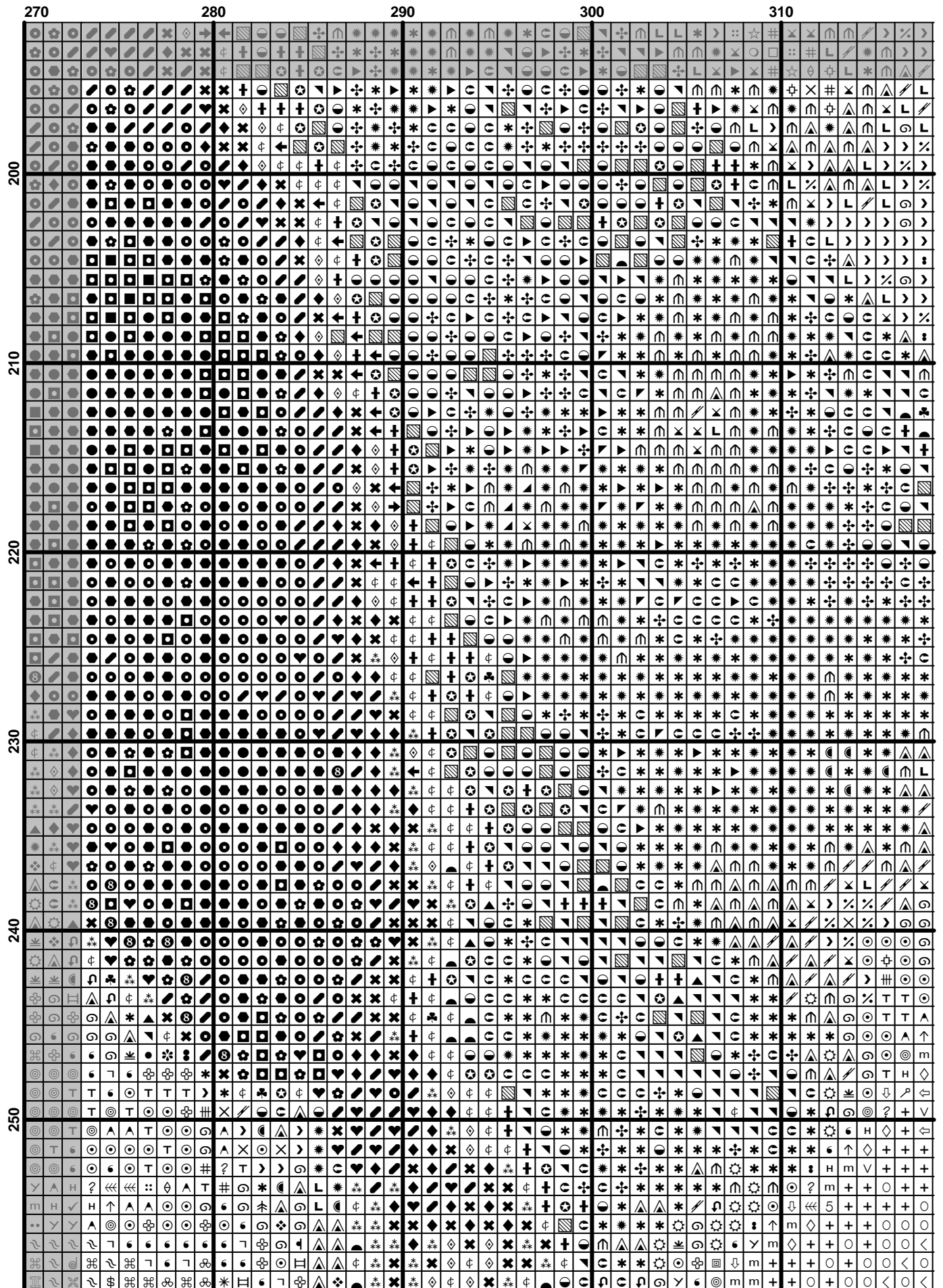
[illegible]

	90	100																									110																									120																									130																																																																																																																																																																																																																																																																																																																																				
200																																																																																																																																																																																																																																																																																																																																																																																																																	
210																																																																																																																																																																																																																																																																																																																																																																																																																	
220																																																																																																																																																																																																																																																																																																																																																																																																																	
230																																																																																																																																																																																																																																																																																																																																																																																																																	
240																																																																																																																																																																																																																																																																																																																																																																																																																	
250																																																																																																																																																																																																																																																																																																																																																																																																																	

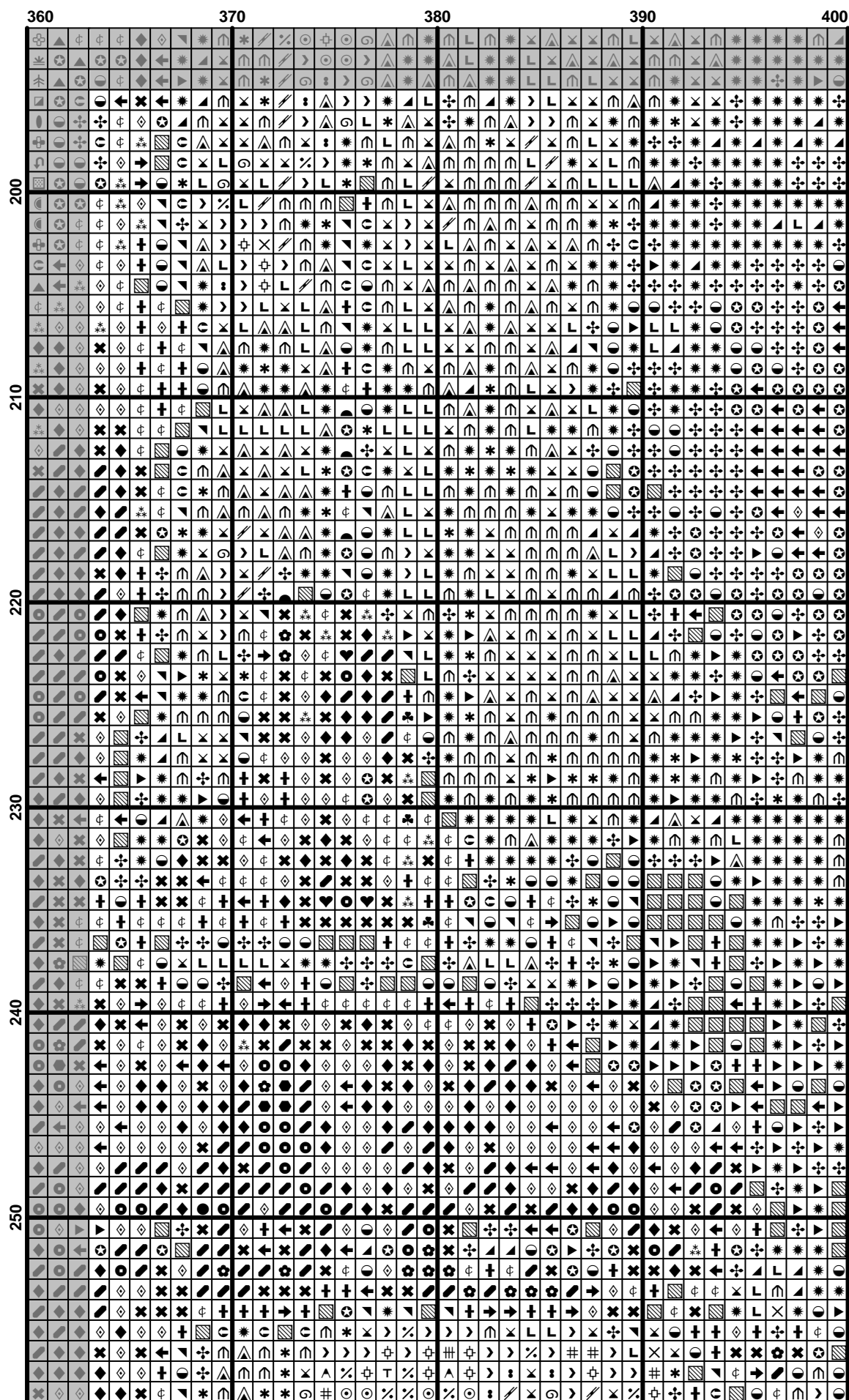
[illegible]

	180	190	200	210	220
200					
210					
220					
230					
240					
250					

$$(42) \quad \frac{1}{\Gamma(\alpha)} \int_0^t (t-s)^{\alpha-1} f(s) ds = \mathcal{I}_\alpha f(t), \quad t \in [0, T],$$



[illegible]



	10	20	30	40
260				
270				
280				
290				
300				
310				
320				

(48)

90	100	110	120	130
260				
270				
280				
290				
300				
310				
320				

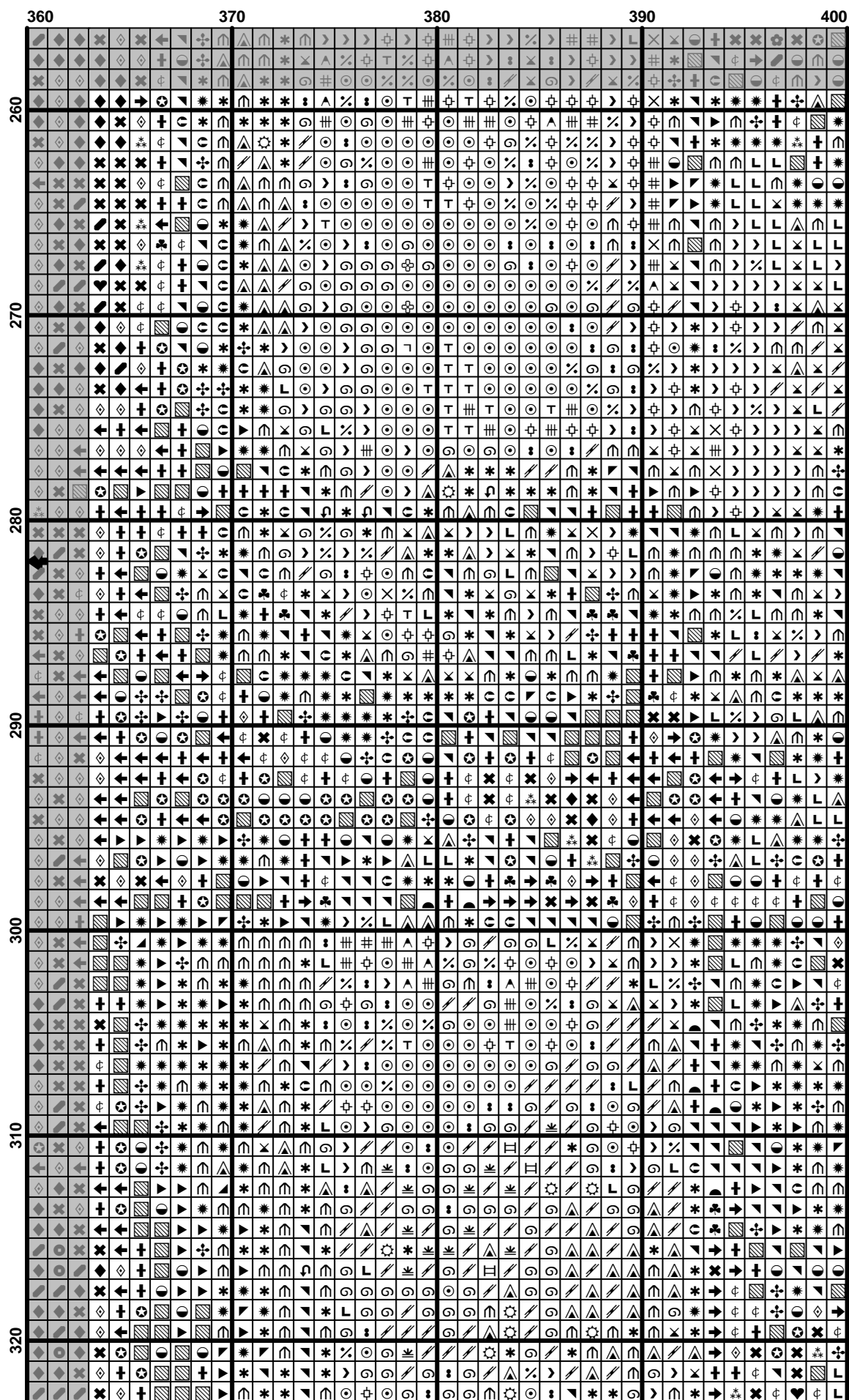
[illegible]

	180	190	200	210	220
260
270
280
290
300
310
320

[illegible]

	270	280	290	300	310
260
270
280
290
300
310
320

[illegible]



	10	20	30	40
320	?	?	?	?
321	?	?	?	?
322	?	?	?	?
323	?	?	?	?
324	?	?	?	?
325	?	?	?	?
326	?	?	?	?
327	?	?	?	?
328	?	?	?	?
329	?	?	?	?
330	?	?	?	?
331	?	?	?	?
332	?	?	?	?
333	?	?	?	?
334	?	?	?	?
335	?	?	?	?
336	?	?	?	?
337	?	?	?	?
338	?	?	?	?
339	?	?	?	?
340	?	?	?	?
341	?	?	?	?
342	?	?	?	?
343	?	?	?	?
344	?	?	?	?
345	?	?	?	?
346	?	?	?	?
347	?	?	?	?
348	?	?	?	?
349	?	?	?	?
350	?	?	?	?
351	?	?	?	?
352	?	?	?	?
353	?	?	?	?
354	?	?	?	?
355	?	?	?	?
356	?	?	?	?
357	?	?	?	?
358	?	?	?	?
359	?	?	?	?
360	?	?	?	?
361	?	?	?	?
362	?	?	?	?
363	?	?	?	?
364	?	?	?	?
365	?	?	?	?
366	?	?	?	?
367	?	?	?	?
368	?	?	?	?
369	?	?	?	?
370	?	?	?	?
371	?	?	?	?
372	?	?	?	?
373	?	?	?	?
374	?	?	?	?
375	?	?	?	?
376	?	?	?	?
377	?	?	?	?
378	?	?	?	?
379	?	?	?	?
380	?	?	?	?
381	?	?	?	?
382	?	?	?	?
383	?	?	?	?
384	?	?	?	?
385	?	?	?	?
386	?	?	?	?
387	?	?	?	?
388	?	?	?	?
389	?	?	?	?
390	?	?	?	?
391	?	?	?	?
392	?	?	?	?
393	?	?	?	?
394	?	?	?	?
395	?	?	?	?
396	?	?	?	?
397	?	?	?	?
398	?	?	?	?
399	?	?	?	?
400	?	?	?	?

[illegible]

	90	100	110	120	130
320
330
340
350
360
370
380

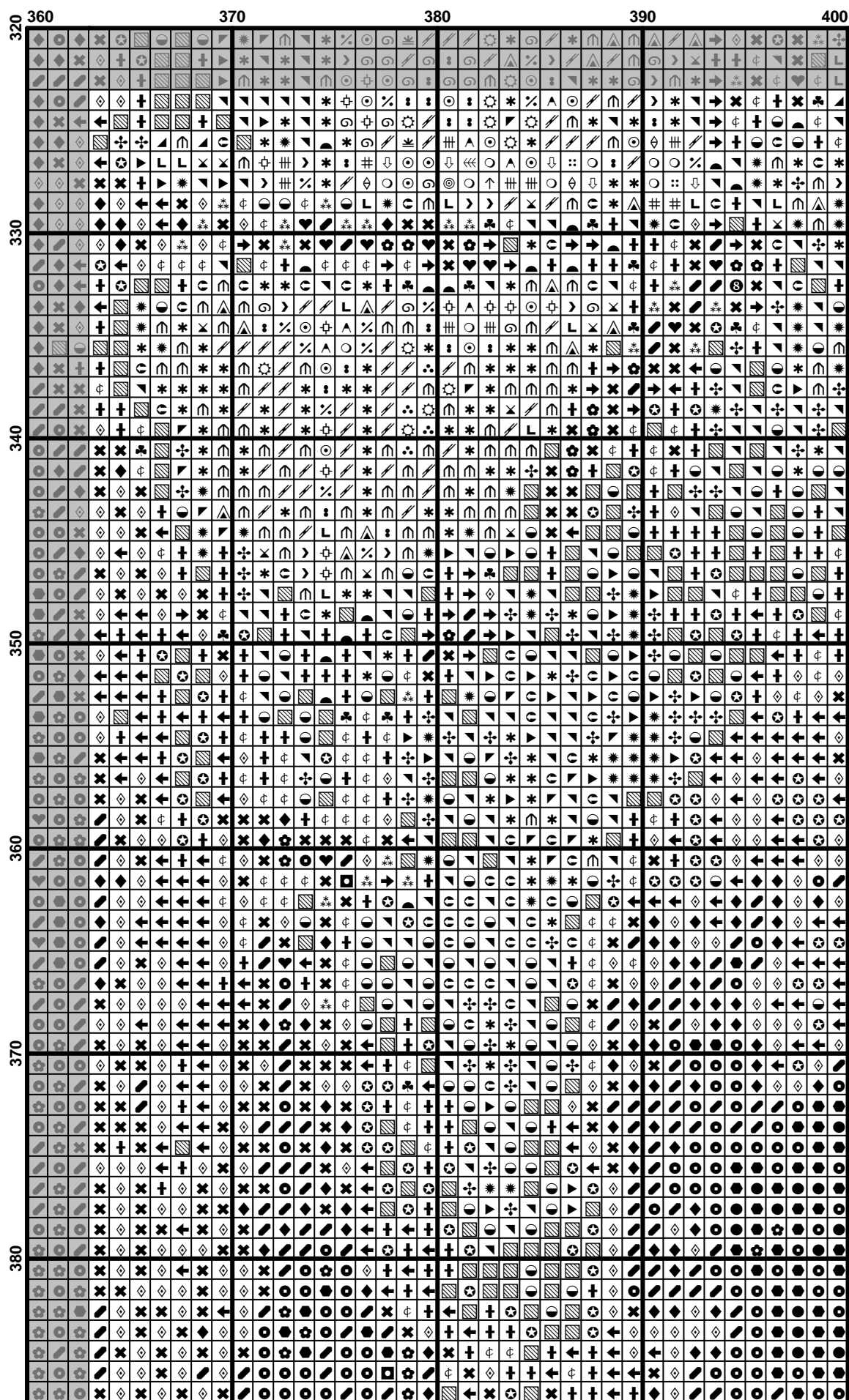
[illegible]

320	180	190	200	210	220
330	340	350	360	370	380

	230	240	250	260	270
320
330
340
350
360
370
380

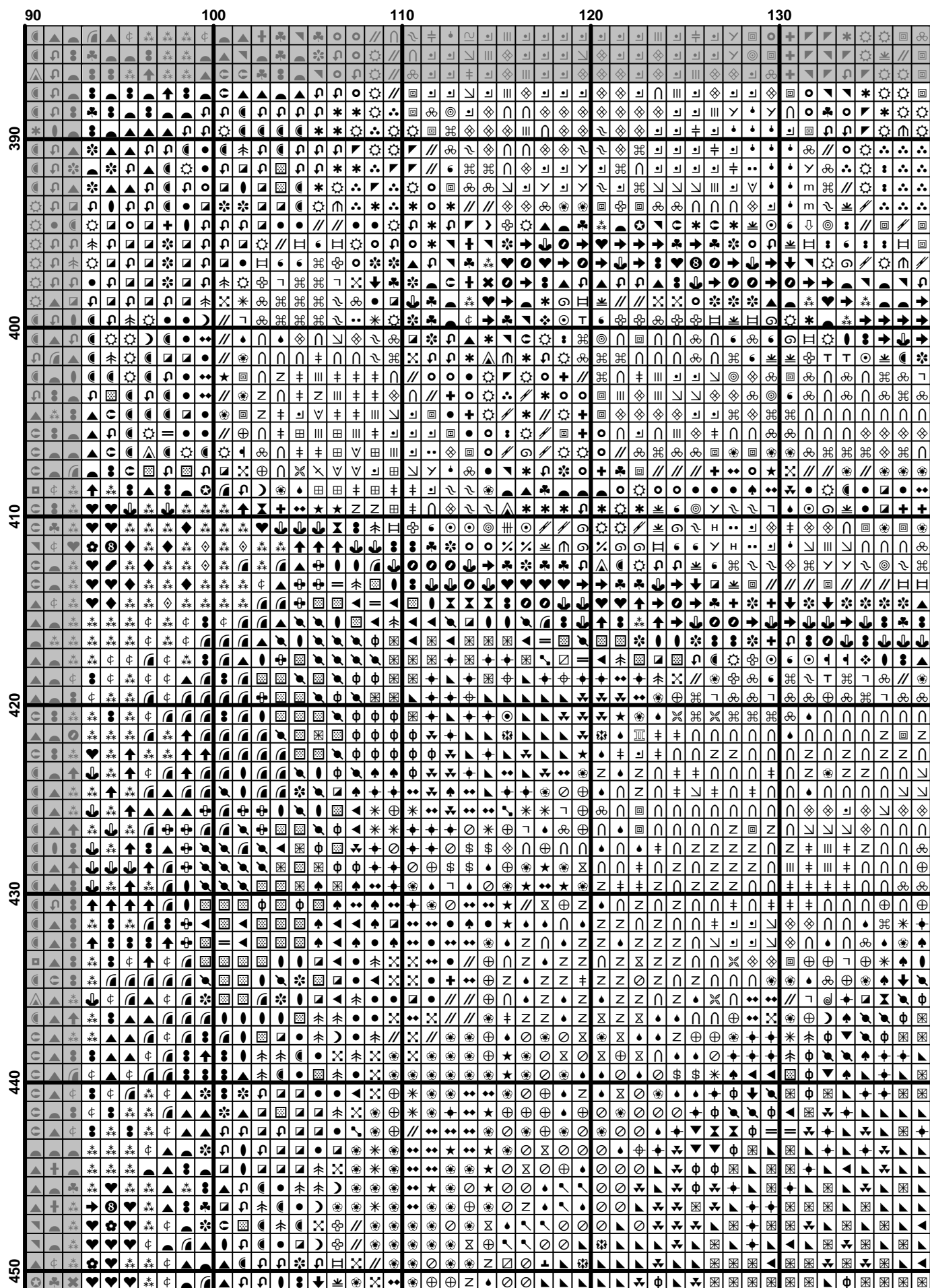
320	280																												290																												300																												310																											
330	280																												290																												300																												310																											
340	280																												290																												300																												310																											
350	280																												290																												300																												310																											
360	280																												290																												300																												310																											
370	280																												290																												300																												310																											
380	280																												290																												300																												310																											

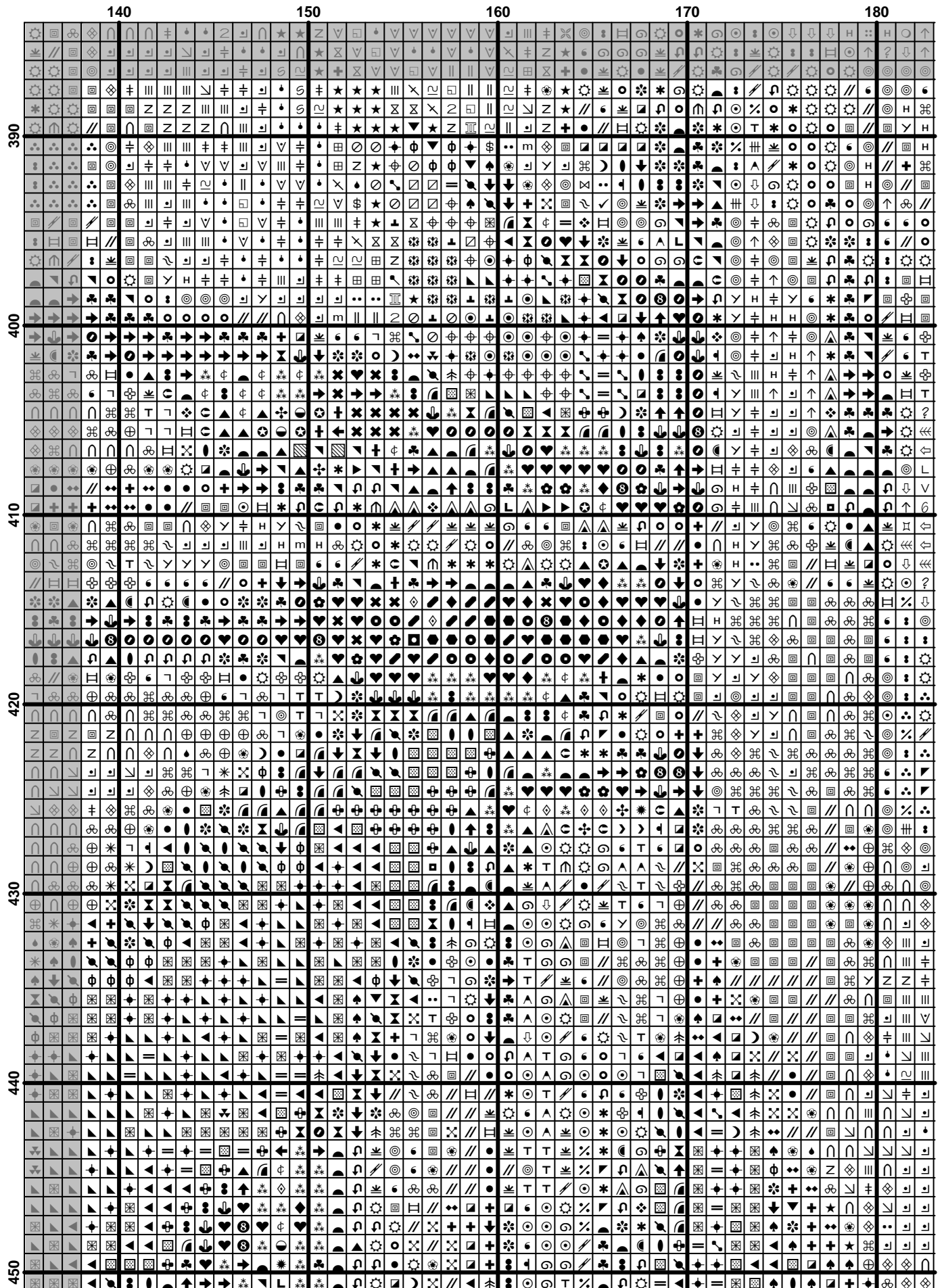
320	320	330	340	350	360
320					
330					
340					
350					
360					
370					
380					



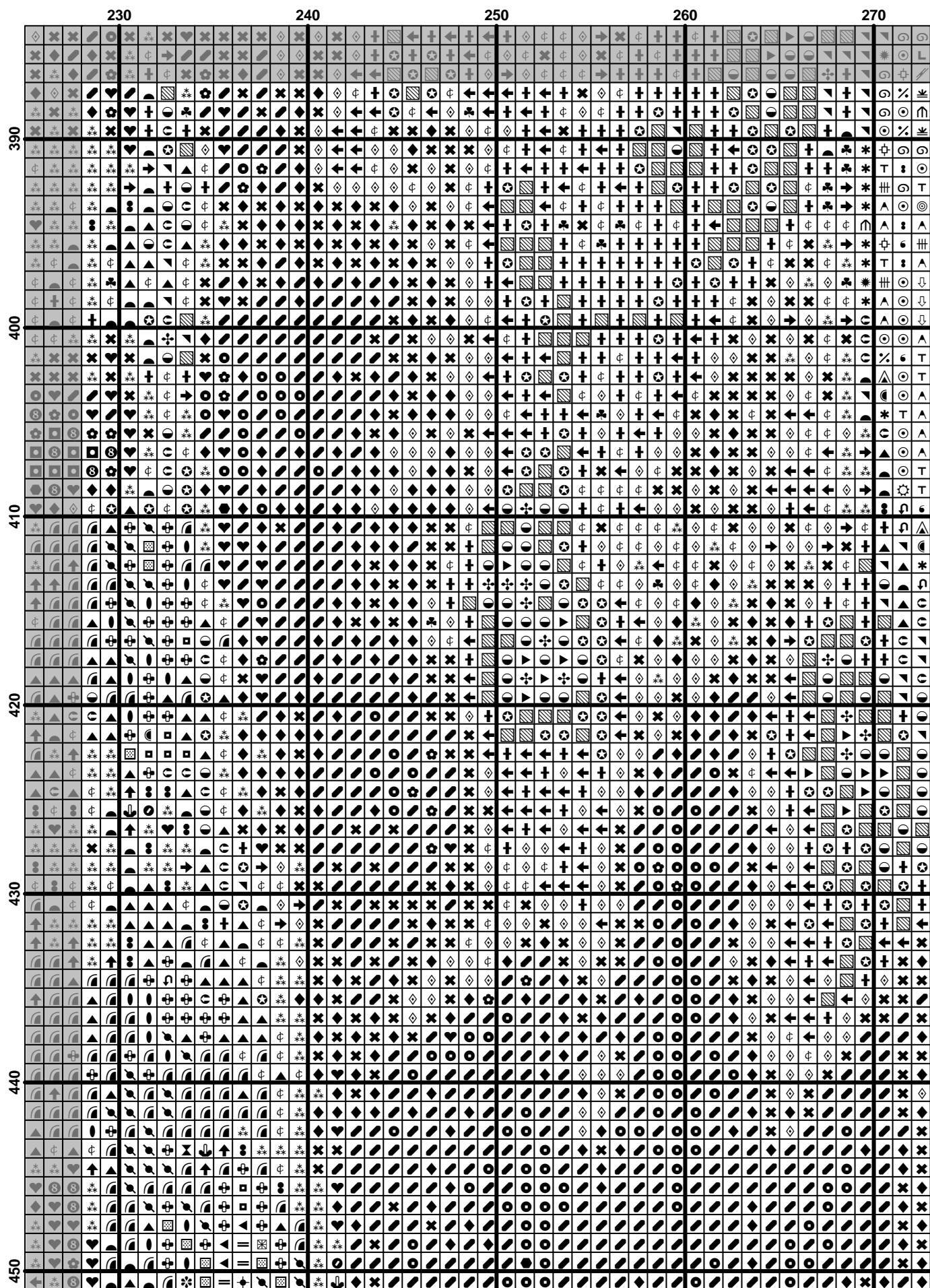
[illegible]

	50										60										70										80										90																																																	
390																																																																																										
400																																																																																										
410																																																																																										
420																																																																																										
430																																																																																										
440																																																																																										
450																																																																																										

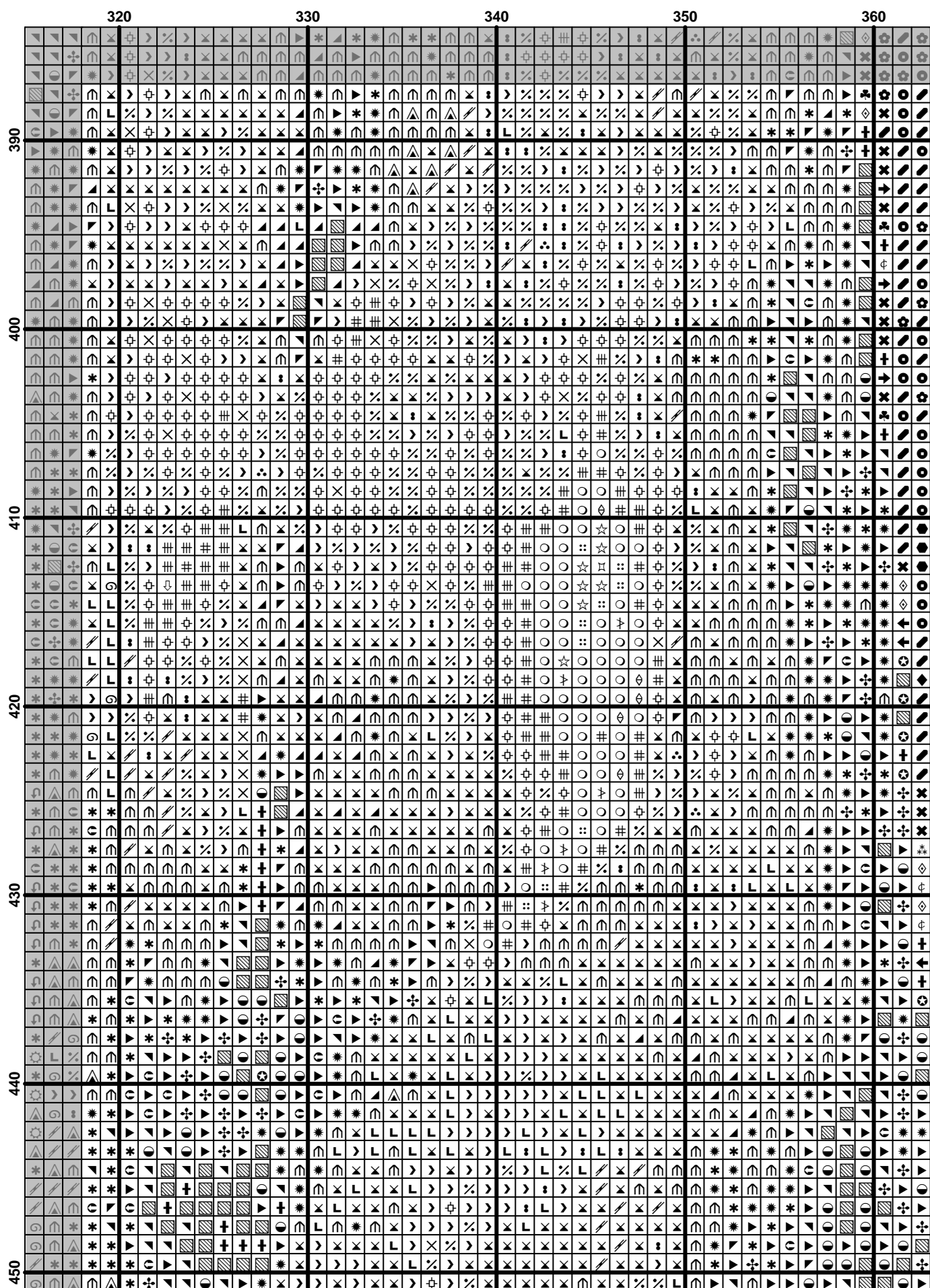


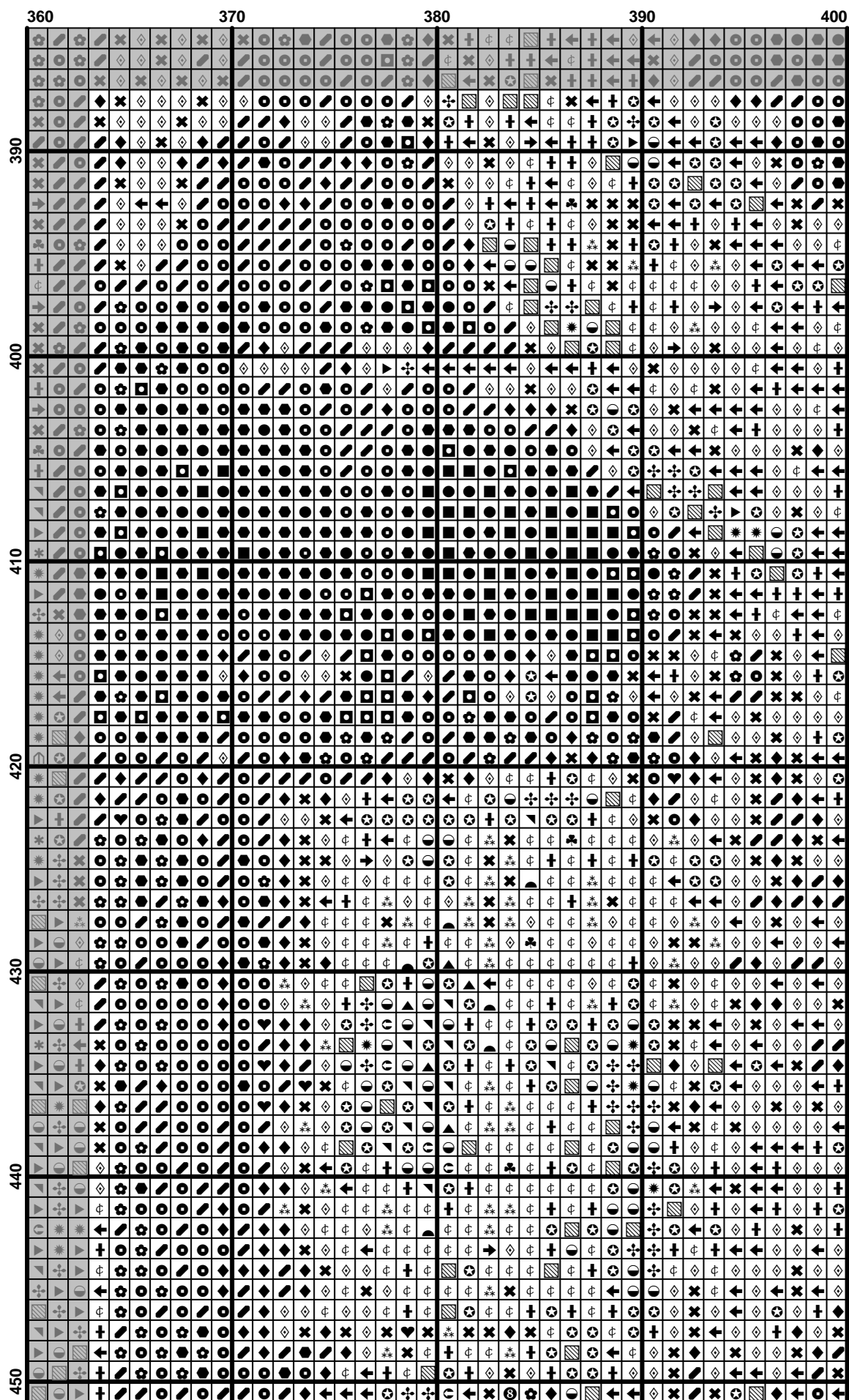


	180	190	200	210	220
390
400
410
420
430
440
450



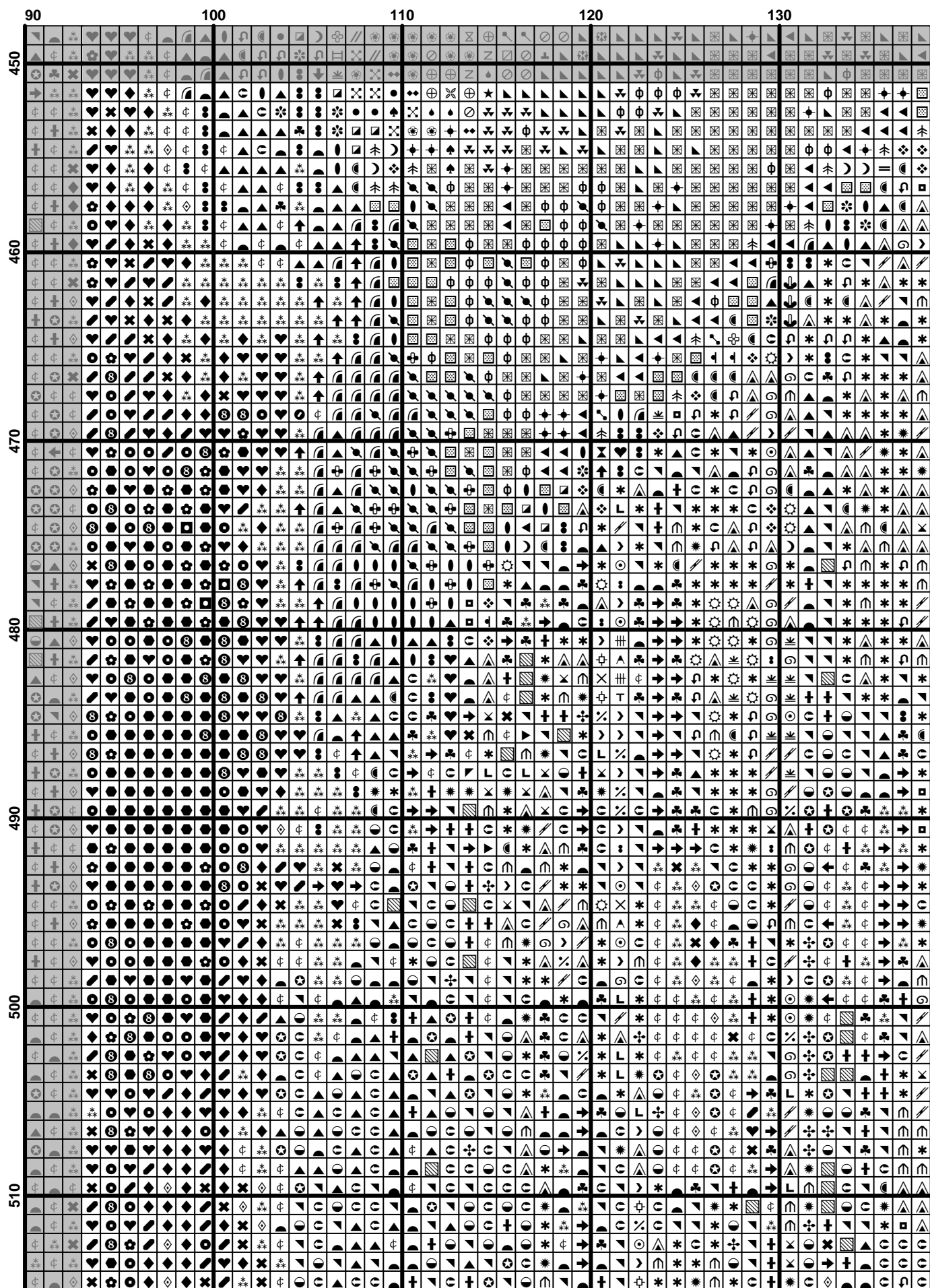
	270	280	290	300	310
390
400
410
420
430
440
450



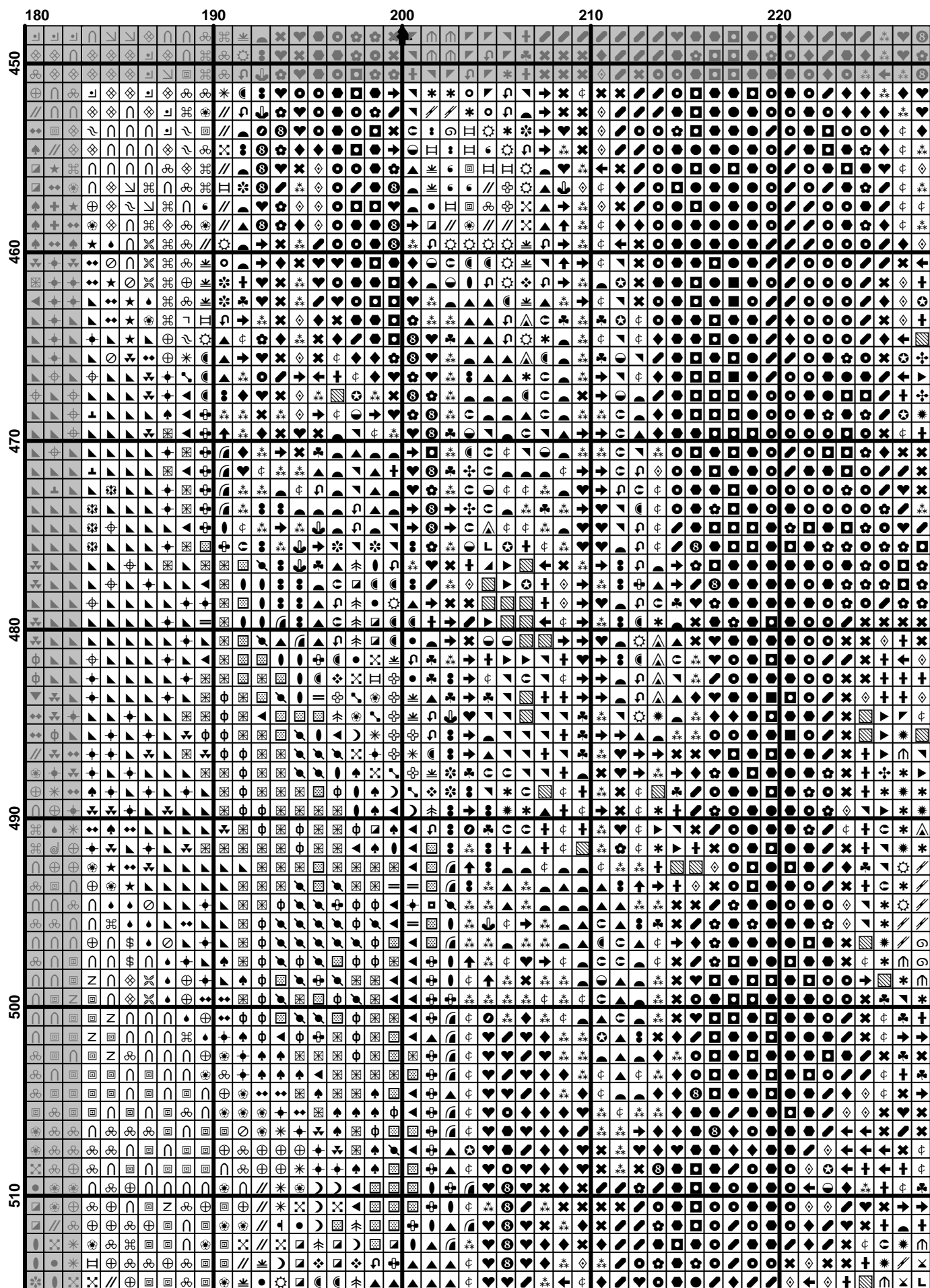


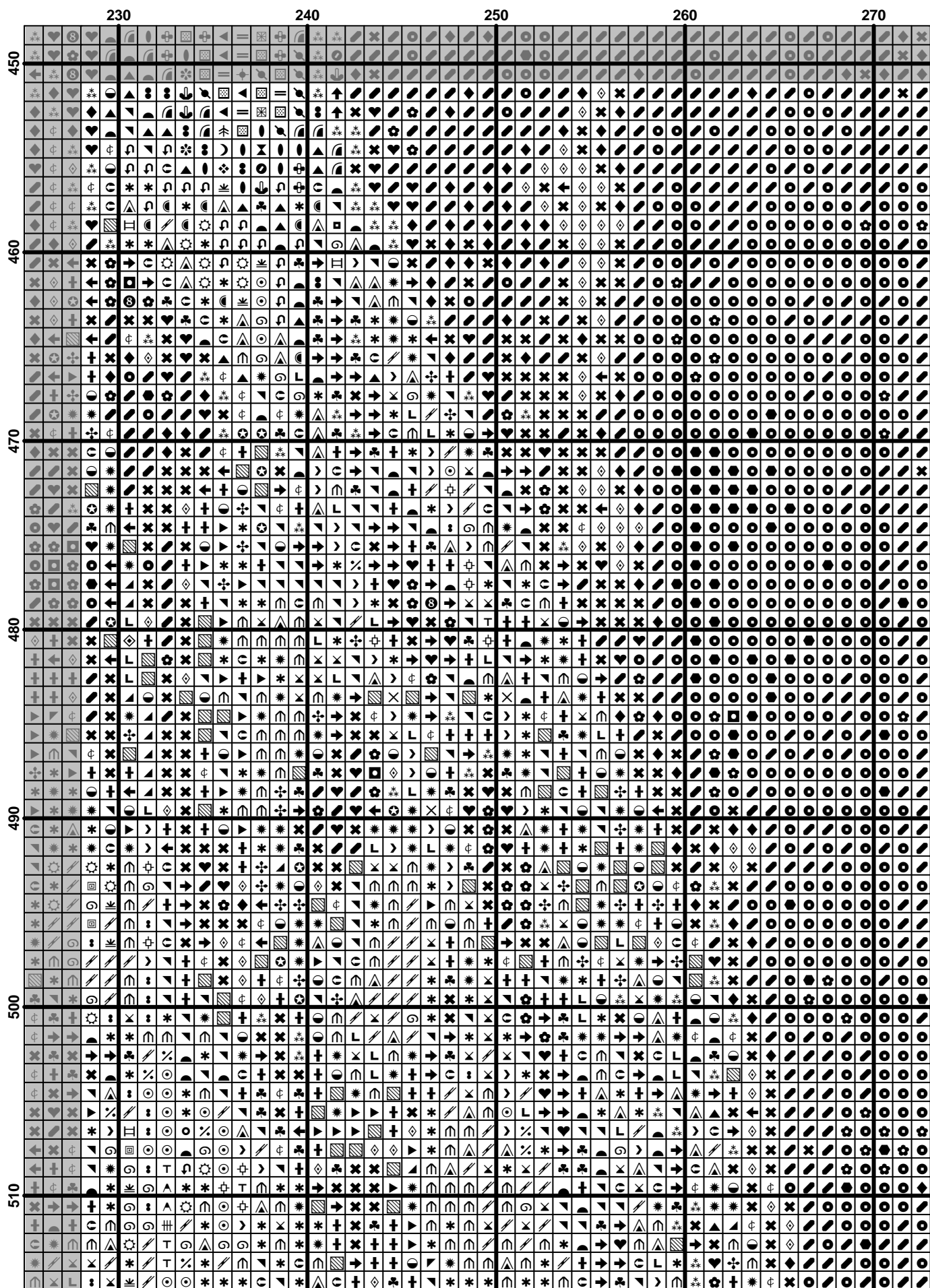
	10										20										30										40																			
450																																																		
460																																																		
470																																																		
480																																																		
490																																																		
500																																																		
510																																																		

	50										60										70										80										90																																																	
450																																																																																										
460																																																																																										
470																																																																																										
480																																																																																										
490																																																																																										
500																																																																																										
510																																																																																										



(77)





[illegible]

