

1105 Still Life of Roses in a Glass Vase



This pattern may not be copied, sold or in any other way handled in any way that violates the international copyright laws. If you get hold of this pattern (and or this document) in any other way than via a direct download from www.goldenkite.com or via a mail from us, you should report that to us at legal_actions@goldenkite.com .

Copyright (c) 2007-, Golden Kite. All rights reserved.

Instructions

Thank you for choosing Golden Kite products!
We hope you will have lots of fun with this cross-stitch pattern!

Fabric

Press the fabric with an iron if needed. A good thing to prevent the fabric from fraying is to machine zigzag the edges.

On large patterns, it is easiest to start from the upper left corner of the design. Make sure you have the proper margins before starting and that the fabric piece is of the correct size. The best way to verify this is to count all stitch positions on the fabric from the upper left corner downwards and to the right to make sure there is enough space for the design.

Some prefer to start in the center of the design instead. To locate the center of the fabric, fold the fabric in half both vertically and horizontally. The center is located where these two folds meet.

Stitches

Each length of DMC tread consists of six strands.
Use two of these strands for all stitches.

Note that some colors may be mixes (or blends) between two different pure colors. In that case take one strand of the two colors each and thread the two strands into the needle at the same time for stitching.

All stitches are full cross-stitches. No half-stitching and no back-stitching is necessary in this pattern.

All cross-stitches will be worked into the holes in the fabric from left to right. Always use the larger holes in the fabric for the stitches. Adjacent stitches should meet in the same hole. Make sure all stitches cross in the same direction.

Please be careful when washing the finished embroidery! The cotton thread may bleed when washed. Only hand wash it in lukewarm water. Remove excess water by roll it in a towel and lay it flat to air dry. Natural fabrics may shrink slightly when washed. We do not recommend washing the embroidery if not absolutely necessary and we take no responsibility for any damage that may occur.

When you start using this product you agree that Golden Kite (Golden K), or any people working for or in association with Golden Kite (Golden K), cannot be set responsible for any physical, mental, economical or other type of damage caused by this product (including this document, pattern, threads, needles and any other parts received by you from Golden Kite (Golden K)).

This pattern may not be copied, sold or in any other way handled in any way that violates the international copyright laws. If you get hold of this pattern (and or this document) in any other way than via a direct download from www.goldenkite.com or via a mail from us, you should report that to us at legal_actions@goldenkite.com .

Still Life of Roses in a Glass Vase

| Stitch Count | |
|--------------|-----|
| Horizontal: | 294 |
| Vertical: | 376 |

| Recommended Fabric Color |
|--------------------------|
| Antique White |

This table tells the size of the pattern (without any margins) and the size of the fabric required to stitch the pattern (including recommended margins). 3 inch margins have been added on each side in the 'Including Margins' row.

The sizes are given for 14, 16 and 18 stitches per inch fabrics.

Make sure to use the 'Including Margins' row when cutting the piece of fabric to be used. Also make sure that 3 inch margins are enough for your stitching technique and add more margin areas if necessary.

| | 14 | | | | 16 | | | | 18 | | | |
|--------------------|-------|-------|--------|-------|-------|-------|--------|-------|-------|-------|--------|--------|
| | Width | | Height | | Width | | Height | | Width | | Height | |
| | cm | inch | cm | inch | cm | inch | cm | inch | cm | inch | cm | inch |
| Pattern: | 54 | 20.89 | 69 | 26.83 | 47 | 18.28 | 60 | 23.48 | 42 | 16.25 | 54 | 20.875 |
| Including Margins: | 70 | 27 | 85 | 33 | 63 | 25 | 76 | 30 | 58 | 23 | 70 | 27 |
| | 10 | | | | 12 | | | | 24 | | | |
| | Width | | Height | | Width | | Height | | Width | | Height | |
| | cm | inch | cm | inch | cm | inch | cm | inch | cm | inch | cm | inch |
| Pattern: | 75 | 29.24 | 96 | 37.56 | 63 | 24.37 | 80 | 31.3 | 31 | 12.18 | 40 | 15.65 |
| Including Margins: | 91 | 36 | 112 | 44 | 79 | 31 | 96 | 38 | 47 | 19 | 56 | 22 |
| | 25 | | | | 26 | | | | 27 | | | |
| | Width | | Height | | Width | | Height | | Width | | Height | |
| | cm | inch | cm | inch | cm | inch | cm | inch | cm | inch | cm | inch |
| Pattern: | 30 | 11.69 | 38 | 15.02 | 29 | 11.24 | 37 | 14.44 | 28 | 10.83 | 35 | 13.91 |
| Including Margins: | 46 | 18 | 54 | 22 | 45 | 18 | 53 | 21 | 44 | 17 | 51 | 20 |
| | 28 | | | | 30 | | | | 32 | | | |
| | Width | | Height | | Width | | Height | | Width | | Height | |
| | cm | inch | cm | inch | cm | inch | cm | inch | cm | inch | cm | inch |
| Pattern: | 27 | 10.44 | 34 | 13.41 | 25 | 9.74 | 32 | 12.52 | 23 | 9.13 | 30 | 11.73 |
| Including Margins: | 43 | 17 | 50 | 20 | 41 | 16 | 48 | 19 | 39 | 16 | 46 | 18 |

| Solid Color Stitches. Use two strands of the specified color for these stitches. | | |
|--|-----|--------------------|
| Symbol | DMC | Name |
| + | 221 | Shell Pink-VY DK |
| 田 | 223 | Shell Pink-LT |
| 9 | 224 | Shell Pink-VY LT |
| ㄣ | 300 | Mahogany-VY DK |
| ■ | 310 | Black |
| // | 317 | Pewter Gray |
| ㄩ | 347 | Salmon-VY DK |
| ㄌ | 351 | Coral |
| e | 352 | Coral-LT |
| l | 353 | Peach |
| ▶ | 355 | Terra Cotta-DK |
| ≡ | 356 | Terra Cotta-MD |
| ≡≡ | 372 | Mustard-LT |
| ㄣ | 402 | Mahogany-VY LT |
| • | 407 | Desert Sand-DK |
| ▣ | 413 | Pewter Gray-DK |
| ⓪ | 414 | Steel Gray-DK |
| 5 | 422 | Hazelnut Brown-LT |
| □ | 452 | Shell Gray-MD |
| ∇ | 522 | Fern Green |
| ✦ | 580 | Moss Green-DK |
| ✧ | 611 | Drab Brown |
| ◇ | 645 | Beaver Gray-VY DK |
| ㊄ | 732 | Olive Green |
| ⊕ | 733 | Olive Green-MD |
| α | 738 | Tan-VY LT |
| • | 739 | Tan-UL VY LT |
| ▷ | 743 | Yellow-MD |
| ♡ | 754 | Peach-LT |
| ◇ | 758 | Terra Cotta-VY LT |
| √ | 760 | Salmon |
| ⊥ | 762 | Pearl Gray-VY LT |
| 1 | 819 | Baby Pink-LT |
| (| 822 | Beige Gray-LT |
| ■ | 823 | Navy Blue-DK |
| ▲ | 830 | Golden Olive-DK |
| φ | 844 | Beaver Brown-UL DK |
| ↖ | 926 | Gray Green-MD |
| — | 927 | Gray Green-LT |
| | 932 | Antique Blue-LT |
| ↓ | 935 | Avocado Green-DK |

| | | |
|----|------|----------------------|
| ♠ | 937 | Avocado Green-MD |
| ♥ | 938 | Coffee Brown-UL DK |
| ∞ | 948 | Peach-VY LT |
| ○ | 950 | Desert Sand-LT |
| ㄣ | 951 | Tawny-LT |
| ◦ | 963 | Dusty Rose-UL VY LT |
| ♠ | 975 | Golden Brown-DK |
| ♣ | 987 | Forest Green-DK |
| ㄣ | 3012 | Khaki Green-MD |
| ↓ | 3021 | Brown Gray-VY DK |
| ↑ | 3032 | Mocha Brown-MD |
| ◁ | 3041 | Antique Violet-MD |
| ⊙ | 3052 | Green Gray-MD |
| + | 3328 | Salmon-DK |
| * | 3346 | Hunter Green |
| ㄣ | 3347 | Yellow Green-MD |
| ● | 3362 | Pine Green-DK |
| ◇ | 3363 | Pine Green-MD |
| ♣ | 3685 | Mauve-DK |
| ▼ | 3712 | Salmon-MD |
| ≡ | 3721 | Shell Pink-DK |
| ♠ | 3722 | Shell Pink-MD |
| : | 3747 | Blue Violet-VY LT |
| = | 3768 | Gray Green-DK |
| « | 3770 | Tawny-VY LT |
| ♣ | 3772 | Desert Sand-VY DK |
| > | 3774 | Desert Sand-VY LT |
| ⌘ | 3778 | Terra Cotta-LT |
| 0 | 3779 | Terra Cotta-UL VY LT |
| Δ | 3781 | Mocha Brown-DK |
| ✕ | 3787 | Brown Gray-DK |
| ○ | 3790 | Beige Gray-UL DK |
| ** | 3799 | Pewter Gray-VY DK |
| + | 3802 | Antique Mauve-VY DK |
| ≡ | 3820 | Straw-DK |
|) | 3822 | Straw-LT |
| φ | 3828 | Hazelnut Brown |
| ↗ | 3830 | Terra Cotta-MD |
| = | 3856 | Mahogany-UL VY LT |
| ⓪ | 3858 | Rosewood-MD |
| ✓ | 3859 | Rosewood-LT |
| ○ | 3861 | Cocoa-LT |
| u | 3865 | Winter White |

| Blend Stitches. Use one strand of each of DMC1 and DMC2 for these stitches. | | | | |
|---|------|------------------|------|-------------------|
| Symbol | DMC1 | Name1 | DMC2 | Name2 |
| ⊕ | 3021 | Brown Gray-VY DK | 3799 | Pewter Gray-VY DK |
| ✦ | 3787 | Brown Gray-DK | 3790 | Beige Gray-UL DK |
| ≡ | 738 | Tan-VY LT | 3856 | Mahogany-UL VY LT |
| ⊗ | 3052 | Green Gray-MD | 3787 | Brown Gray-DK |
| ↖ | 3346 | Hunter Green | 3347 | Yellow Green-MD |

| | | | | |
|-----|------|----------------------|------|---------------------|
| ⌘ | 611 | Drab Brown | 3347 | Yellow Green-MD |
| ⬮ | 844 | Beaver Brown-UL DK | 3021 | Brown Gray-VY DK |
| ▲ | 3781 | Mocha Brown-DK | 3021 | Brown Gray-VY DK |
| ⊞ | 413 | Pewter Gray-DK | 3799 | Pewter Gray-VY DK |
| ■ | 3362 | Pine Green-DK | 413 | Pewter Gray-DK |
| ⊞ | 3790 | Beige Gray-UL DK | 3346 | Hunter Green |
| ● | 823 | Navy Blue-DK | 3799 | Pewter Gray-VY DK |
| ☞ | 938 | Coffee Brown-UL DK | 3799 | Pewter Gray-VY DK |
| ✕ | 938 | Coffee Brown-UL DK | 3021 | Brown Gray-VY DK |
| ➔ | 938 | Coffee Brown-UL DK | 3802 | Antique Mauve-VY DK |
| z | 3722 | Shell Pink-MD | 3772 | Desert Sand-VY DK |
| H | 3721 | Shell Pink-DK | 3772 | Desert Sand-VY DK |
| ↳ | 3778 | Terra Cotta-LT | 356 | Terra Cotta-MD |
| ↘ | 3328 | Salmon-DK | 3830 | Terra Cotta-MD |
| III | 3778 | Terra Cotta-LT | 3328 | Salmon-DK |
| ⊛ | 3346 | Hunter Green | 645 | Beaver Gray-VY DK |
| ✕ | 3781 | Mocha Brown-DK | 3787 | Brown Gray-DK |
| ◀ | 830 | Golden Olive-DK | 3012 | Khaki Green-MD |
| ⊞ | 3328 | Salmon-DK | 356 | Terra Cotta-MD |
| ⊞ | 3802 | Antique Mauve-VY DK | 3858 | Rosewood-MD |
| ⊞ | 823 | Navy Blue-DK | 935 | Avocado Green-DK |
| ⇒ | 224 | Shell Pink-VY LT | 353 | Peach |
| ● | 844 | Beaver Brown-UL DK | 3787 | Brown Gray-DK |
| ✕ | 3830 | Terra Cotta-MD | 356 | Terra Cotta-MD |
| ◀ | 413 | Pewter Gray-DK | 3768 | Gray Green-DK |
| ? | 407 | Desert Sand-DK | 738 | Tan-VY LT |
| ↑ | 3685 | Mauve-DK | 938 | Coffee Brown-UL DK |
| ⌘ | 221 | Shell Pink-VY DK | 938 | Coffee Brown-UL DK |
| ● | 938 | Coffee Brown-UL DK | 823 | Navy Blue-DK |
| / | 950 | Desert Sand-LT | 452 | Shell Gray-MD |
| ☺ | 3781 | Mocha Brown-DK | 3362 | Pine Green-DK |
| ⊞ | 3799 | Pewter Gray-VY DK | 3362 | Pine Green-DK |
| ⊞ | 3362 | Pine Green-DK | 3346 | Hunter Green |
| ⬮ | 844 | Beaver Brown-UL DK | 645 | Beaver Gray-VY DK |
| ☺ | 3772 | Desert Sand-VY DK | 611 | Drab Brown |
| ↘ | 927 | Gray Green-LT | 3041 | Antique Violet-MD |
| ✧ | 3861 | Cocoa-LT | 407 | Desert Sand-DK |
| ⌘ | 3721 | Shell Pink-DK | 407 | Desert Sand-DK |
| ↓ | 223 | Shell Pink-LT | 3032 | Mocha Brown-MD |
| ⬮ | 3772 | Desert Sand-VY DK | 3790 | Beige Gray-UL DK |
| ↑ | 353 | Peach | 948 | Peach-VY LT |
| ◀ | 351 | Coral | 356 | Terra Cotta-MD |
| L | 3716 | Dusty Rose-VY LT | 353 | Peach |
| ♦ | 3790 | Beige Gray-UL DK | 844 | Beaver Brown-UL DK |
| ● | 844 | Beaver Brown-UL DK | 3781 | Mocha Brown-DK |
| ★ | 3790 | Beige Gray-UL DK | 3858 | Rosewood-MD |
| + | 3781 | Mocha Brown-DK | 3858 | Rosewood-MD |
| ▲ | 3787 | Brown Gray-DK | 3858 | Rosewood-MD |
| + | 739 | Tan-UL VY LT | 372 | Mustard-LT |
| n | 963 | Dusty Rose-UL VY LT | 819 | Baby Pink-LT |
| ^ | 3770 | Tawny-VY LT | 754 | Peach-LT |
| ⊞ | 372 | Mustard-LT | 353 | Peach |
| v | 758 | Terra Cotta-VY LT | 948 | Peach-VY LT |
| ⬮ | 3770 | Tawny-VY LT | 948 | Peach-VY LT |
| # | 3328 | Salmon-DK | 351 | Coral |
| △ | 452 | Shell Gray-MD | 3774 | Desert Sand-VY LT |
| ➔ | 3858 | Rosewood-MD | 3859 | Rosewood-LT |
| ⊞ | 356 | Terra Cotta-MD | 3859 | Rosewood-LT |
| 4 | 3779 | Terra Cotta-UL VY LT | 352 | Coral-LT |

Copyright (c) 2007-, Golden Kite (Golden K.)

Internet: www.goldenkite.com

e-mail: info@goldenkite.com

| | | | | |
|-----|------|--------------------|------|----------------------|
| •• | 3828 | Hazelnut Brown | 3347 | Yellow Green-MD |
| :: | 372 | Mustard-LT | 522 | Fern Green |
| ▼ | 935 | Avocado Green-DK | 937 | Avocado Green-MD |
| ▣ | 580 | Moss Green-DK | 3347 | Yellow Green-MD |
| ⌈ | 3790 | Beige Gray-UL DK | 3362 | Pine Green-DK |
| ⬆ | 3781 | Mocha Brown-DK | 3772 | Desert Sand-VY DK |
| × | 3328 | Salmon-DK | 3712 | Salmon-MD |
| □ | 822 | Beige Gray-LT | 3774 | Desert Sand-VY LT |
| ∪ | 407 | Desert Sand-DK | 950 | Desert Sand-LT |
| § | 3722 | Shell Pink-MD | 3778 | Terra Cotta-LT |
| ⊕ | 3347 | Yellow Green-MD | 830 | Golden Olive-DK |
| ✕ | 645 | Beaver Gray-VY DK | 987 | Forest Green-DK |
| ⌘ | 3772 | Desert Sand-VY DK | 3052 | Green Gray-MD |
| Ⓢ | 935 | Avocado Green-DK | 310 | Black |
| ⦿ | 987 | Forest Green-DK | 3052 | Green Gray-MD |
| ‡ | 950 | Desert Sand-LT | 3779 | Terra Cotta-UL VY LT |
| m | 3778 | Terra Cotta-LT | 760 | Salmon |
| 3 | 407 | Desert Sand-DK | 3779 | Terra Cotta-UL VY LT |
| ⊠ | 3778 | Terra Cotta-LT | 3779 | Terra Cotta-UL VY LT |
| н | 3778 | Terra Cotta-LT | 351 | Coral |
| ⇐ | 224 | Shell Pink-VY LT | 3716 | Dusty Rose-VY LT |
| 7 | 3712 | Salmon-MD | 352 | Coral-LT |
| < | 948 | Peach-VY LT | 950 | Desert Sand-LT |
| ‡ | 355 | Terra Cotta-DK | 3328 | Salmon-DK |
| ∞ | 3774 | Desert Sand-VY LT | 819 | Baby Pink-LT |
| ✱ | 347 | Salmon-VY DK | 355 | Terra Cotta-DK |
| ⊠ | 347 | Salmon-VY DK | 221 | Shell Pink-VY DK |
| · · | 760 | Salmon | 407 | Desert Sand-DK |
| β | 775 | Baby Blue-VY LT | 932 | Antique Blue-LT |
| L | 3768 | Gray Green-DK | 3363 | Pine Green-MD |
| ⚙ | 413 | Pewter Gray-DK | 987 | Forest Green-DK |
| ▲ | 3362 | Pine Green-DK | 987 | Forest Green-DK |
| ← | 823 | Navy Blue-DK | 3362 | Pine Green-DK |
| ✱ | 987 | Forest Green-DK | 3799 | Pewter Gray-VY DK |
| ⊠ | 351 | Coral | 355 | Terra Cotta-DK |
| ❖ | 937 | Avocado Green-MD | 3346 | Hunter Green |
| ⊕ | 611 | Drab Brown | 580 | Moss Green-DK |
| ▸ | 3721 | Shell Pink-DK | 3858 | Rosewood-MD |
| ⌘ | 3362 | Pine Green-DK | 310 | Black |
| ◆ | 938 | Coffee Brown-UL DK | 300 | Mahogany-VY DK |
| ▲ | 3781 | Mocha Brown-DK | 300 | Mahogany-VY DK |
| ⦿ | 3781 | Mocha Brown-DK | 938 | Coffee Brown-UL DK |
| T | 3012 | Khaki Green-MD | 3826 | Golden Brown |
| ● | 938 | Coffee Brown-UL DK | 310 | Black |
| ▲ | 3790 | Beige Gray-UL DK | 3828 | Hazelnut Brown |
| * | 830 | Golden Olive-DK | 975 | Golden Brown-DK |
| ↖ | 3012 | Khaki Green-MD | 975 | Golden Brown-DK |
| ↖ | 3858 | Rosewood-MD | 938 | Coffee Brown-UL DK |
| ✱ | 938 | Coffee Brown-UL DK | 347 | Salmon-VY DK |
| ☆ | 351 | Coral | 352 | Coral-LT |
| ⦿ | 221 | Shell Pink-VY DK | 310 | Black |
| § | 775 | Baby Blue-VY LT | 317 | Pewter Gray |

This table specifies how much thread of each color is required to stitch this pattern. It is good to know that one complete DMC skein contains 313 inches (795 cm) thread.

| DMC | Name | Usage (cm) | Usage (inch) | Usage (cm) | Usage (inch) | Usage (cm) | Usage (inch) |
|------|---------------------|------------|--------------|------------|--------------|------------|--------------|
| | | 14 | | 16 | | 18 | |
| 221 | Shell Pink-VY DK | 171 | 67 | 163 | 64 | 147 | 57 |
| 223 | Shell Pink-LT | 95 | 37 | 91 | 35 | 82 | 32 |
| 224 | Shell Pink-VY LT | 145 | 57 | 138 | 54 | 124 | 48 |
| 300 | Mahogany-VY DK | 154 | 60 | 146 | 57 | 132 | 51 |
| 310 | Black | 2530 | 996 | 2410 | 948 | 2169 | 853 |
| 317 | Pewter Gray | 28 | 11 | 26 | 10 | 24 | 9 |
| 347 | Salmon-VY DK | 106 | 41 | 101 | 39 | 91 | 35 |
| 351 | Coral | 115 | 45 | 109 | 42 | 98 | 38 |
| 352 | Coral-LT | 169 | 66 | 161 | 63 | 144 | 56 |
| 353 | Peach | 352 | 138 | 335 | 131 | 302 | 118 |
| 355 | Terra Cotta-DK | 137 | 53 | 130 | 51 | 117 | 46 |
| 356 | Terra Cotta-MD | 193 | 75 | 184 | 72 | 165 | 64 |
| 372 | Mustard-LT | 154 | 60 | 147 | 57 | 132 | 51 |
| 402 | Mahogany-VY LT | 17 | 6 | 16 | 6 | 14 | 5 |
| 407 | Desert Sand-DK | 480 | 188 | 457 | 179 | 411 | 161 |
| 413 | Pewter Gray-DK | 453 | 178 | 431 | 169 | 388 | 152 |
| 414 | Steel Gray-DK | 12 | 4 | 12 | 4 | 10 | 3 |
| 422 | Hazelnut Brown-LT | 16 | 6 | 15 | 5 | 14 | 5 |
| 452 | Shell Gray-MD | 90 | 35 | 85 | 33 | 77 | 30 |
| 522 | Fern Green | 91 | 35 | 86 | 33 | 78 | 30 |
| 580 | Moss Green-DK | 79 | 31 | 75 | 29 | 67 | 26 |
| 611 | Drab Brown | 130 | 51 | 123 | 48 | 111 | 43 |
| 645 | Beaver Gray-VY DK | 489 | 192 | 466 | 183 | 419 | 164 |
| 732 | Olive Green | 18 | 7 | 17 | 6 | 15 | 5 |
| 733 | Olive Green-MD | 45 | 17 | 43 | 16 | 38 | 14 |
| 738 | Tan-VY LT | 80 | 31 | 76 | 29 | 68 | 26 |
| 739 | Tan-UL VY LT | 62 | 24 | 59 | 23 | 53 | 20 |
| 743 | Yellow-MD | 1 | 1 | 1 | 1 | 1 | 1 |
| 754 | Peach-LT | 195 | 76 | 185 | 72 | 167 | 65 |
| 758 | Terra Cotta-VY LT | 164 | 64 | 156 | 61 | 141 | 55 |
| 760 | Salmon | 144 | 56 | 137 | 53 | 123 | 48 |
| 762 | Pearl Gray-VY LT | 4 | 1 | 4 | 1 | 3 | 1 |
| 775 | Baby Blue-VY LT | 7 | 2 | 7 | 2 | 6 | 2 |
| 819 | Baby Pink-LT | 405 | 159 | 386 | 151 | 347 | 136 |
| 822 | Beige Gray-LT | 41 | 16 | 39 | 15 | 35 | 13 |
| 823 | Navy Blue-DK | 1445 | 568 | 1376 | 541 | 1238 | 487 |
| 830 | Golden Olive-DK | 128 | 50 | 122 | 48 | 110 | 43 |
| 844 | Beaver Brown-UL DK | 1592 | 626 | 1516 | 596 | 1365 | 537 |
| 926 | Gray Green-MD | 24 | 9 | 23 | 9 | 20 | 7 |
| 927 | Gray Green-LT | 22 | 8 | 21 | 8 | 19 | 7 |
| 932 | Antique Blue-LT | 5 | 1 | 5 | 1 | 4 | 1 |
| 935 | Avocado Green-DK | 1180 | 464 | 1124 | 442 | 1011 | 398 |
| 937 | Avocado Green-MD | 472 | 185 | 449 | 176 | 404 | 159 |
| 938 | Coffee Brown-UL DK | 4345 | 1710 | 4138 | 1629 | 3724 | 1466 |
| 948 | Peach-VY LT | 479 | 188 | 456 | 179 | 410 | 161 |
| 950 | Desert Sand-LT | 335 | 131 | 319 | 125 | 287 | 112 |
| 951 | Tawny-LT | 60 | 23 | 57 | 22 | 51 | 20 |
| 963 | Dusty Rose-UL VY LT | 156 | 61 | 148 | 58 | 133 | 52 |
| 975 | Golden Brown-DK | 76 | 29 | 73 | 28 | 65 | 25 |
| 987 | Forest Green-DK | 336 | 132 | 320 | 125 | 288 | 113 |
| 3012 | Khaki Green-MD | 116 | 45 | 110 | 43 | 99 | 38 |
| 3021 | Brown Gray-VY DK | 1363 | 536 | 1298 | 511 | 1168 | 459 |
| 3032 | Mocha Brown-MD | 119 | 46 | 113 | 44 | 102 | 40 |

| | | | | | | | |
|------|----------------------|------|-----|------|-----|------|-----|
| 3041 | Antique Violet-MD | 68 | 26 | 65 | 25 | 59 | 23 |
| 3052 | Green Gray-MD | 257 | 101 | 245 | 96 | 220 | 86 |
| 3328 | Salmon-DK | 145 | 57 | 138 | 54 | 124 | 48 |
| 3346 | Hunter Green | 470 | 185 | 447 | 175 | 402 | 158 |
| 3347 | Yellow Green-MD | 261 | 102 | 248 | 97 | 223 | 87 |
| 3362 | Pine Green-DK | 1007 | 396 | 959 | 377 | 863 | 339 |
| 3363 | Pine Green-MD | 164 | 64 | 157 | 61 | 141 | 55 |
| 3685 | Mauve-DK | 17 | 6 | 16 | 6 | 14 | 5 |
| 3712 | Salmon-MD | 70 | 27 | 66 | 25 | 60 | 23 |
| 3716 | Dusty Rose-VY LT | 50 | 19 | 47 | 18 | 43 | 16 |
| 3721 | Shell Pink-DK | 173 | 68 | 165 | 64 | 148 | 58 |
| 3722 | Shell Pink-MD | 71 | 27 | 68 | 26 | 61 | 24 |
| 3747 | Blue Violet-VY LT | 3 | 1 | 3 | 1 | 3 | 1 |
| 3768 | Gray Green-DK | 47 | 18 | 45 | 17 | 40 | 15 |
| 3770 | Tawny-VY LT | 340 | 133 | 324 | 127 | 292 | 114 |
| 3772 | Desert Sand-VY DK | 299 | 117 | 284 | 111 | 256 | 100 |
| 3774 | Desert Sand-VY LT | 116 | 45 | 110 | 43 | 99 | 38 |
| 3778 | Terra Cotta-LT | 337 | 132 | 321 | 126 | 289 | 113 |
| 3779 | Terra Cotta-UL VY LT | 348 | 137 | 332 | 130 | 298 | 117 |
| 3781 | Mocha Brown-DK | 2011 | 791 | 1915 | 753 | 1724 | 678 |
| 3787 | Brown Gray-DK | 1270 | 500 | 1209 | 475 | 1088 | 428 |
| 3790 | Beige Gray-UL DK | 966 | 380 | 920 | 362 | 828 | 325 |
| 3799 | Pewter Gray-VY DK | 1961 | 772 | 1868 | 735 | 1681 | 661 |
| 3802 | Antique Mauve-VY DK | 82 | 32 | 78 | 30 | 70 | 27 |
| 3820 | Straw-DK | 4 | 1 | 4 | 1 | 4 | 1 |
| 3822 | Straw-LT | 2 | 1 | 2 | 1 | 1 | 1 |
| 3826 | Golden Brown | 15 | 5 | 14 | 5 | 12 | 4 |
| 3828 | Hazelnut Brown | 110 | 43 | 104 | 40 | 94 | 37 |
| 3830 | Terra Cotta-MD | 97 | 38 | 92 | 36 | 83 | 32 |
| 3856 | Mahogany-UL VY LT | 39 | 15 | 37 | 14 | 33 | 12 |
| 3858 | Rosewood-MD | 439 | 172 | 418 | 164 | 377 | 148 |
| 3859 | Rosewood-LT | 158 | 62 | 151 | 59 | 135 | 53 |
| 3861 | Cocoa-LT | 86 | 33 | 82 | 32 | 74 | 29 |
| 3865 | Winter White | 51 | 20 | 48 | 18 | 43 | 16 |

Extended thread usage table.

| DMC | Name | Usage (cm) | Usage (inch) | Usage (cm) | Usage (inch) | Usage (cm) | Usage (inch) |
|-----|-------------------|------------|--------------|------------|--------------|------------|--------------|
| | | 10 | | 12 | | 24 | |
| 221 | Shell Pink-VY DK | 265 | 103 | 221 | 86 | 110 | 43 |
| 223 | Shell Pink-LT | 148 | 58 | 123 | 48 | 62 | 24 |
| 224 | Shell Pink-VY LT | 223 | 86 | 186 | 72 | 93 | 36 |
| 300 | Mahogany-VY DK | 238 | 92 | 198 | 77 | 99 | 38 |
| 310 | Black | 3904 | 1535 | 3254 | 1280 | 1627 | 640 |
| 317 | Pewter Gray | 43 | 16 | 36 | 14 | 18 | 7 |
| 347 | Salmon-VY DK | 164 | 63 | 137 | 53 | 68 | 26 |
| 351 | Coral | 176 | 68 | 147 | 57 | 74 | 29 |
| 352 | Coral-LT | 259 | 101 | 216 | 84 | 108 | 42 |
| 353 | Peach | 544 | 212 | 453 | 177 | 227 | 89 |
| 355 | Terra Cotta-DK | 211 | 83 | 176 | 69 | 88 | 35 |
| 356 | Terra Cotta-MD | 297 | 115 | 248 | 96 | 124 | 48 |
| 372 | Mustard-LT | 238 | 92 | 198 | 77 | 99 | 38 |
| 402 | Mahogany-VY LT | 25 | 9 | 21 | 8 | 11 | 4 |
| 407 | Desert Sand-DK | 740 | 290 | 617 | 242 | 308 | 121 |
| 413 | Pewter Gray-DK | 698 | 274 | 582 | 228 | 291 | 114 |
| 414 | Steel Gray-DK | 18 | 5 | 15 | 5 | 8 | 2 |
| 422 | Hazelnut Brown-LT | 25 | 9 | 21 | 8 | 11 | 4 |
| 452 | Shell Gray-MD | 139 | 54 | 116 | 45 | 58 | 23 |

| | | | | | | | |
|------|----------------------|------|------|------|------|------|------|
| 522 | Fern Green | 140 | 54 | 117 | 45 | 59 | 23 |
| 580 | Moss Green-DK | 121 | 47 | 101 | 39 | 50 | 20 |
| 611 | Drab Brown | 200 | 77 | 167 | 65 | 83 | 32 |
| 645 | Beaver Gray-VY DK | 754 | 295 | 629 | 246 | 314 | 123 |
| 732 | Olive Green | 27 | 9 | 23 | 8 | 11 | 4 |
| 733 | Olive Green-MD | 68 | 25 | 57 | 21 | 29 | 11 |
| 738 | Tan-VY LT | 122 | 47 | 102 | 39 | 51 | 20 |
| 739 | Tan-UL VY LT | 95 | 36 | 80 | 30 | 40 | 15 |
| 743 | Yellow-MD | 2 | 2 | 2 | 2 | 1 | 1 |
| 754 | Peach-LT | 301 | 117 | 251 | 98 | 125 | 49 |
| 758 | Terra Cotta-VY LT | 254 | 99 | 212 | 83 | 106 | 41 |
| 760 | Salmon | 221 | 86 | 185 | 72 | 92 | 36 |
| 762 | Pearl Gray-VY LT | 5 | 2 | 5 | 2 | 2 | 1 |
| 775 | Baby Blue-VY LT | 11 | 4 | 9 | 3 | 5 | 2 |
| 819 | Baby Pink-LT | 625 | 245 | 521 | 204 | 260 | 102 |
| 822 | Beige Gray-LT | 63 | 23 | 53 | 20 | 26 | 10 |
| 823 | Navy Blue-DK | 2228 | 877 | 1857 | 731 | 929 | 365 |
| 830 | Golden Olive-DK | 198 | 77 | 165 | 65 | 83 | 32 |
| 844 | Beaver Brown-UL DK | 2457 | 967 | 2048 | 806 | 1024 | 403 |
| 926 | Gray Green-MD | 36 | 13 | 30 | 11 | 15 | 5 |
| 927 | Gray Green-LT | 34 | 13 | 29 | 11 | 14 | 5 |
| 932 | Antique Blue-LT | 7 | 2 | 6 | 2 | 3 | 1 |
| 935 | Avocado Green-DK | 1820 | 716 | 1517 | 597 | 758 | 299 |
| 937 | Avocado Green-MD | 727 | 286 | 606 | 239 | 303 | 119 |
| 938 | Coffee Brown-UL DK | 6703 | 2639 | 5586 | 2199 | 2793 | 1100 |
| 948 | Peach-VY LT | 738 | 290 | 615 | 242 | 308 | 121 |
| 950 | Desert Sand-LT | 517 | 202 | 431 | 168 | 215 | 84 |
| 951 | Tawny-LT | 92 | 36 | 77 | 30 | 38 | 15 |
| 963 | Dusty Rose-UL VY LT | 239 | 94 | 200 | 78 | 100 | 39 |
| 975 | Golden Brown-DK | 117 | 45 | 98 | 38 | 49 | 19 |
| 987 | Forest Green-DK | 518 | 203 | 432 | 170 | 216 | 85 |
| 3012 | Khaki Green-MD | 178 | 68 | 149 | 57 | 74 | 29 |
| 3021 | Brown Gray-VY DK | 2102 | 826 | 1752 | 689 | 876 | 344 |
| 3032 | Mocha Brown-MD | 184 | 72 | 153 | 60 | 77 | 30 |
| 3041 | Antique Violet-MD | 106 | 41 | 89 | 35 | 44 | 17 |
| 3052 | Green Gray-MD | 396 | 155 | 330 | 129 | 165 | 65 |
| 3328 | Salmon-DK | 223 | 86 | 186 | 72 | 93 | 36 |
| 3346 | Hunter Green | 724 | 284 | 603 | 237 | 302 | 119 |
| 3347 | Yellow Green-MD | 401 | 157 | 335 | 131 | 167 | 65 |
| 3362 | Pine Green-DK | 1553 | 610 | 1295 | 509 | 647 | 254 |
| 3363 | Pine Green-MD | 254 | 99 | 212 | 83 | 106 | 41 |
| 3685 | Mauve-DK | 25 | 9 | 21 | 8 | 11 | 4 |
| 3712 | Salmon-MD | 108 | 41 | 90 | 35 | 45 | 17 |
| 3716 | Dusty Rose-VY LT | 77 | 29 | 65 | 24 | 32 | 12 |
| 3721 | Shell Pink-DK | 266 | 104 | 222 | 87 | 111 | 44 |
| 3722 | Shell Pink-MD | 110 | 43 | 92 | 36 | 46 | 18 |
| 3747 | Blue Violet-VY LT | 5 | 2 | 5 | 2 | 2 | 1 |
| 3768 | Gray Green-DK | 72 | 27 | 60 | 23 | 30 | 11 |
| 3770 | Tawny-VY LT | 526 | 205 | 438 | 171 | 219 | 86 |
| 3772 | Desert Sand-VY DK | 461 | 180 | 384 | 150 | 192 | 75 |
| 3774 | Desert Sand-VY LT | 178 | 68 | 149 | 57 | 74 | 29 |
| 3778 | Terra Cotta-LT | 520 | 203 | 434 | 170 | 217 | 85 |
| 3779 | Terra Cotta-UL VY LT | 536 | 211 | 447 | 176 | 224 | 88 |
| 3781 | Mocha Brown-DK | 3103 | 1220 | 2586 | 1017 | 1293 | 509 |
| 3787 | Brown Gray-DK | 1958 | 770 | 1632 | 642 | 816 | 321 |
| 3790 | Beige Gray-UL DK | 1490 | 585 | 1242 | 488 | 621 | 244 |
| 3799 | Pewter Gray-VY DK | 3026 | 1190 | 2522 | 992 | 1261 | 496 |
| 3802 | Antique Mauve-VY DK | 126 | 49 | 105 | 41 | 53 | 20 |
| 3820 | Straw-DK | 7 | 2 | 6 | 2 | 3 | 1 |

Copyright (c) 2007-, Golden Kite (Golden K.)

Internet: www.goldenkite.com

e-mail: info@goldenkite.com

| | | | | | | | |
|------|-------------------|-----|-----|-----|-----|-----|-----|
| 3822 | Straw-LT | 2 | 2 | 2 | 2 | 1 | 1 |
| 3826 | Golden Brown | 22 | 7 | 18 | 6 | 9 | 3 |
| 3828 | Hazelnut Brown | 169 | 67 | 141 | 56 | 71 | 28 |
| 3830 | Terra Cotta-MD | 149 | 58 | 125 | 48 | 62 | 24 |
| 3856 | Mahogany-UL VY LT | 59 | 22 | 50 | 18 | 25 | 9 |
| 3858 | Rosewood-MD | 679 | 266 | 566 | 222 | 283 | 111 |
| 3859 | Rosewood-LT | 243 | 95 | 203 | 80 | 101 | 40 |
| 3861 | Cocoa-LT | 133 | 52 | 111 | 44 | 56 | 22 |
| 3865 | Winter White | 77 | 29 | 65 | 24 | 32 | 12 |

Extended thread usage table.

| DMC | Name | Usage (cm) | Usage (inch) | Usage (cm) | Usage (inch) | Usage (cm) | Usage (inch) |
|-----|--------------------|------------|--------------|------------|--------------|------------|--------------|
| | | 25 | | 26 | | 27 | |
| 221 | Shell Pink-VY DK | 106 | 41 | 102 | 39 | 98 | 38 |
| 223 | Shell Pink-LT | 59 | 23 | 57 | 22 | 55 | 21 |
| 224 | Shell Pink-VY LT | 89 | 35 | 86 | 33 | 83 | 32 |
| 300 | Mahogany-VY DK | 95 | 37 | 91 | 35 | 88 | 34 |
| 310 | Black | 1562 | 614 | 1502 | 591 | 1446 | 569 |
| 317 | Pewter Gray | 17 | 6 | 17 | 6 | 16 | 6 |
| 347 | Salmon-VY DK | 66 | 25 | 63 | 24 | 61 | 23 |
| 351 | Coral | 71 | 27 | 68 | 26 | 65 | 25 |
| 352 | Coral-LT | 104 | 40 | 100 | 39 | 96 | 37 |
| 353 | Peach | 217 | 85 | 209 | 82 | 201 | 79 |
| 355 | Terra Cotta-DK | 84 | 33 | 81 | 32 | 78 | 31 |
| 356 | Terra Cotta-MD | 119 | 46 | 114 | 44 | 110 | 43 |
| 372 | Mustard-LT | 95 | 37 | 91 | 35 | 88 | 34 |
| 402 | Mahogany-VY LT | 10 | 4 | 10 | 3 | 9 | 3 |
| 407 | Desert Sand-DK | 296 | 116 | 285 | 111 | 274 | 107 |
| 413 | Pewter Gray-DK | 279 | 109 | 269 | 105 | 259 | 101 |
| 414 | Steel Gray-DK | 7 | 2 | 7 | 2 | 7 | 2 |
| 422 | Hazelnut Brown-LT | 10 | 4 | 10 | 3 | 9 | 3 |
| 452 | Shell Gray-MD | 55 | 22 | 53 | 21 | 51 | 20 |
| 522 | Fern Green | 56 | 22 | 54 | 21 | 52 | 20 |
| 580 | Moss Green-DK | 48 | 19 | 46 | 18 | 45 | 17 |
| 611 | Drab Brown | 80 | 31 | 77 | 30 | 74 | 29 |
| 645 | Beaver Gray-VY DK | 302 | 118 | 290 | 114 | 279 | 109 |
| 732 | Olive Green | 11 | 4 | 10 | 3 | 10 | 3 |
| 733 | Olive Green-MD | 27 | 10 | 26 | 10 | 25 | 9 |
| 738 | Tan-VY LT | 49 | 19 | 47 | 18 | 45 | 17 |
| 739 | Tan-UL VY LT | 38 | 14 | 37 | 14 | 35 | 13 |
| 743 | Yellow-MD | 1 | 1 | 1 | 1 | 1 | 1 |
| 754 | Peach-LT | 120 | 47 | 116 | 45 | 111 | 43 |
| 758 | Terra Cotta-VY LT | 102 | 40 | 98 | 38 | 94 | 37 |
| 760 | Salmon | 89 | 35 | 85 | 33 | 82 | 32 |
| 762 | Pearl Gray-VY LT | 2 | 1 | 2 | 1 | 2 | 1 |
| 775 | Baby Blue-VY LT | 4 | 1 | 4 | 1 | 4 | 1 |
| 819 | Baby Pink-LT | 250 | 98 | 240 | 94 | 231 | 91 |
| 822 | Beige Gray-LT | 25 | 9 | 24 | 9 | 23 | 9 |
| 823 | Navy Blue-DK | 891 | 351 | 857 | 337 | 825 | 325 |
| 830 | Golden Olive-DK | 79 | 31 | 76 | 30 | 73 | 29 |
| 844 | Beaver Brown-UL DK | 983 | 387 | 945 | 372 | 910 | 358 |
| 926 | Gray Green-MD | 14 | 5 | 14 | 5 | 13 | 5 |
| 927 | Gray Green-LT | 14 | 5 | 13 | 5 | 13 | 5 |
| 932 | Antique Blue-LT | 3 | 1 | 3 | 1 | 3 | 1 |
| 935 | Avocado Green-DK | 728 | 287 | 700 | 276 | 674 | 265 |
| 937 | Avocado Green-MD | 291 | 114 | 280 | 110 | 269 | 106 |
| 938 | Coffee Brown-UL DK | 2681 | 1056 | 2578 | 1015 | 2483 | 977 |

| | | | | | | | |
|------|----------------------|------|-----|------|-----|------|-----|
| 948 | Peach-VY LT | 295 | 116 | 284 | 111 | 273 | 107 |
| 950 | Desert Sand-LT | 207 | 81 | 199 | 78 | 191 | 75 |
| 951 | Tawny-LT | 37 | 14 | 35 | 14 | 34 | 13 |
| 963 | Dusty Rose-UL VY LT | 96 | 37 | 92 | 36 | 89 | 35 |
| 975 | Golden Brown-DK | 47 | 18 | 45 | 17 | 43 | 17 |
| 987 | Forest Green-DK | 207 | 81 | 199 | 78 | 192 | 75 |
| 3012 | Khaki Green-MD | 71 | 27 | 69 | 26 | 66 | 25 |
| 3021 | Brown Gray-VY DK | 841 | 330 | 809 | 318 | 779 | 306 |
| 3032 | Mocha Brown-MD | 73 | 29 | 71 | 28 | 68 | 27 |
| 3041 | Antique Violet-MD | 42 | 17 | 41 | 16 | 39 | 15 |
| 3052 | Green Gray-MD | 158 | 62 | 152 | 60 | 147 | 57 |
| 3328 | Salmon-DK | 89 | 35 | 86 | 33 | 83 | 32 |
| 3346 | Hunter Green | 289 | 114 | 278 | 109 | 268 | 105 |
| 3347 | Yellow Green-MD | 161 | 63 | 154 | 60 | 149 | 58 |
| 3362 | Pine Green-DK | 621 | 244 | 597 | 235 | 575 | 226 |
| 3363 | Pine Green-MD | 102 | 40 | 98 | 38 | 94 | 37 |
| 3685 | Mauve-DK | 10 | 4 | 10 | 3 | 9 | 3 |
| 3712 | Salmon-MD | 43 | 17 | 42 | 16 | 40 | 15 |
| 3716 | Dusty Rose-VY LT | 31 | 12 | 30 | 11 | 29 | 11 |
| 3721 | Shell Pink-DK | 107 | 42 | 102 | 40 | 99 | 39 |
| 3722 | Shell Pink-MD | 44 | 17 | 42 | 17 | 41 | 16 |
| 3747 | Blue Violet-VY LT | 2 | 1 | 2 | 1 | 2 | 1 |
| 3768 | Gray Green-DK | 29 | 11 | 28 | 10 | 27 | 10 |
| 3770 | Tawny-VY LT | 210 | 82 | 202 | 79 | 195 | 76 |
| 3772 | Desert Sand-VY DK | 184 | 72 | 177 | 69 | 171 | 67 |
| 3774 | Desert Sand-VY LT | 71 | 27 | 69 | 26 | 66 | 25 |
| 3778 | Terra Cotta-LT | 208 | 81 | 200 | 78 | 193 | 75 |
| 3779 | Terra Cotta-UL VY LT | 215 | 84 | 206 | 81 | 199 | 78 |
| 3781 | Mocha Brown-DK | 1241 | 488 | 1194 | 469 | 1149 | 452 |
| 3787 | Brown Gray-DK | 783 | 308 | 753 | 296 | 725 | 285 |
| 3790 | Beige Gray-UL DK | 596 | 234 | 573 | 225 | 552 | 217 |
| 3799 | Pewter Gray-VY DK | 1210 | 476 | 1164 | 458 | 1121 | 441 |
| 3802 | Antique Mauve-VY DK | 50 | 19 | 48 | 19 | 47 | 18 |
| 3820 | Straw-DK | 3 | 1 | 3 | 1 | 3 | 1 |
| 3822 | Straw-LT | 1 | 1 | 1 | 1 | 1 | 1 |
| 3826 | Golden Brown | 9 | 3 | 8 | 3 | 8 | 3 |
| 3828 | Hazelnut Brown | 68 | 27 | 65 | 26 | 63 | 25 |
| 3830 | Terra Cotta-MD | 60 | 23 | 57 | 22 | 55 | 21 |
| 3856 | Mahogany-UL VY LT | 24 | 9 | 23 | 8 | 22 | 8 |
| 3858 | Rosewood-MD | 271 | 107 | 261 | 102 | 251 | 99 |
| 3859 | Rosewood-LT | 97 | 38 | 93 | 37 | 90 | 35 |
| 3861 | Cocoa-LT | 53 | 21 | 51 | 20 | 49 | 19 |
| 3865 | Winter White | 31 | 12 | 30 | 11 | 29 | 11 |

Extended thread usage table.

| DMC | Name | Usage (cm) | Usage (inch) | Usage (cm) | Usage (inch) | Usage (cm) | Usage (inch) |
|-----|------------------|------------|--------------|------------|--------------|------------|--------------|
| | | 28 | | 30 | | 32 | |
| 221 | Shell Pink-VY DK | 95 | 37 | 88 | 34 | 83 | 32 |
| 223 | Shell Pink-LT | 53 | 21 | 49 | 19 | 46 | 18 |
| 224 | Shell Pink-VY LT | 80 | 31 | 74 | 29 | 70 | 27 |
| 300 | Mahogany-VY DK | 85 | 33 | 79 | 31 | 74 | 29 |
| 310 | Black | 1394 | 548 | 1301 | 512 | 1220 | 480 |
| 317 | Pewter Gray | 15 | 6 | 14 | 5 | 14 | 5 |
| 347 | Salmon-VY DK | 59 | 23 | 55 | 21 | 51 | 20 |
| 351 | Coral | 63 | 24 | 59 | 23 | 55 | 21 |
| 352 | Coral-LT | 93 | 36 | 86 | 34 | 81 | 32 |
| 353 | Peach | 194 | 76 | 181 | 71 | 170 | 66 |
| 355 | Terra Cotta-DK | 75 | 30 | 70 | 28 | 66 | 26 |

Copyright (c) 2007-, Golden Kite (Golden K.)

Internet: www.goldenkite.com

e-mail: info@goldenkite.com

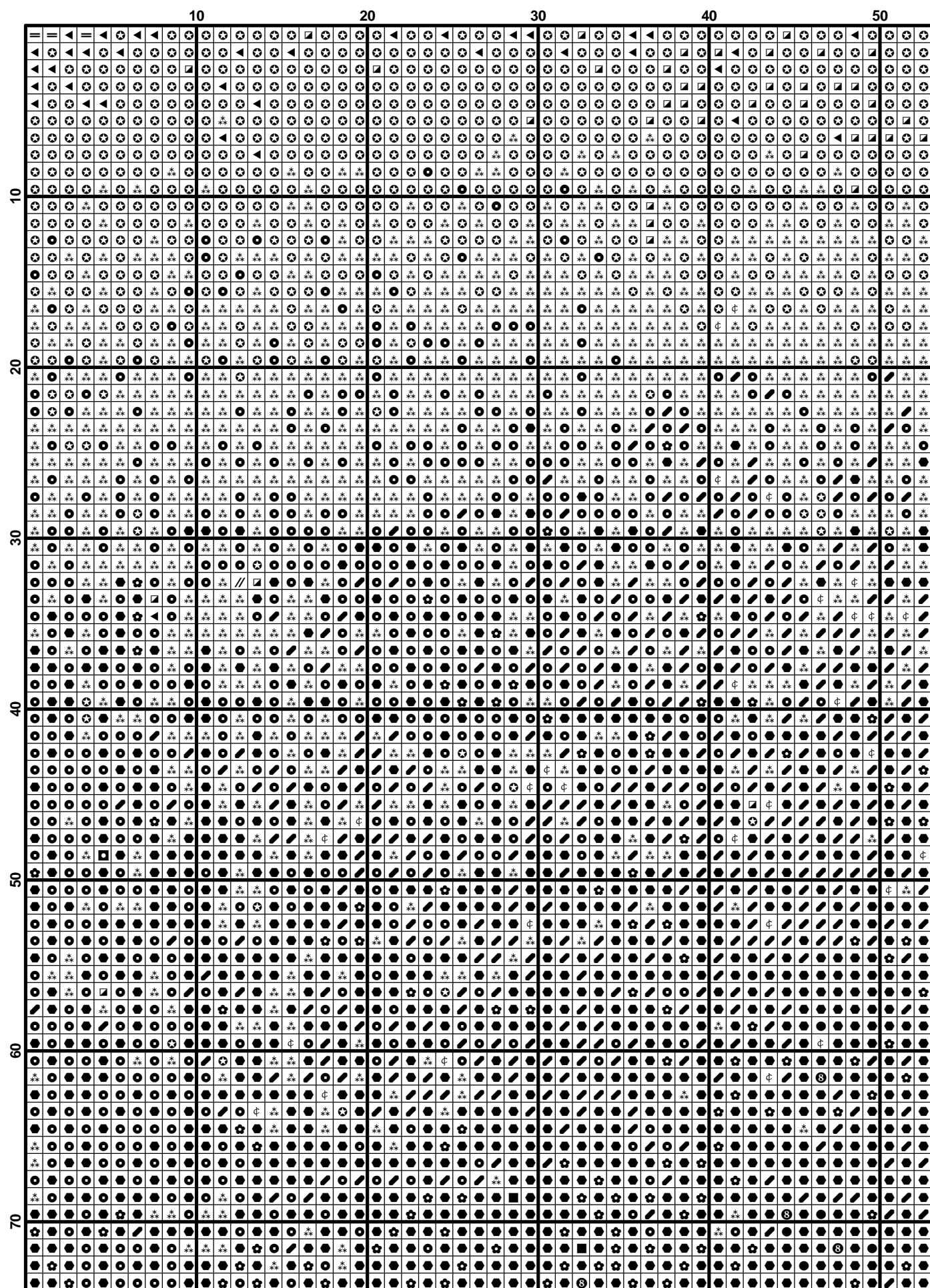
| | | | | | | | |
|------|---------------------|------|-----|------|-----|------|-----|
| 356 | Terra Cotta-MD | 106 | 41 | 99 | 38 | 93 | 36 |
| 372 | Mustard-LT | 85 | 33 | 79 | 31 | 74 | 29 |
| 402 | Mahogany-VY LT | 9 | 3 | 8 | 3 | 8 | 3 |
| 407 | Desert Sand-DK | 264 | 104 | 247 | 97 | 231 | 91 |
| 413 | Pewter Gray-DK | 249 | 98 | 233 | 91 | 218 | 86 |
| 414 | Steel Gray-DK | 6 | 2 | 6 | 2 | 6 | 2 |
| 422 | Hazelnut Brown-LT | 9 | 3 | 8 | 3 | 8 | 3 |
| 452 | Shell Gray-MD | 50 | 19 | 46 | 18 | 43 | 17 |
| 522 | Fern Green | 50 | 19 | 47 | 18 | 44 | 17 |
| 580 | Moss Green-DK | 43 | 17 | 40 | 16 | 38 | 15 |
| 611 | Drab Brown | 71 | 28 | 67 | 26 | 62 | 24 |
| 645 | Beaver Gray-VY DK | 269 | 105 | 251 | 98 | 236 | 92 |
| 732 | Olive Green | 10 | 3 | 9 | 3 | 8 | 3 |
| 733 | Olive Green-MD | 24 | 9 | 23 | 8 | 21 | 8 |
| 738 | Tan-VY LT | 44 | 17 | 41 | 16 | 38 | 15 |
| 739 | Tan-UL VY LT | 34 | 13 | 32 | 12 | 30 | 11 |
| 743 | Yellow-MD | 1 | 1 | 1 | 1 | 1 | 1 |
| 754 | Peach-LT | 107 | 42 | 100 | 39 | 94 | 37 |
| 758 | Terra Cotta-VY LT | 91 | 35 | 85 | 33 | 79 | 31 |
| 760 | Salmon | 79 | 31 | 74 | 29 | 69 | 27 |
| 762 | Pearl Gray-VY LT | 2 | 1 | 2 | 1 | 2 | 1 |
| 775 | Baby Blue-VY LT | 4 | 1 | 4 | 1 | 3 | 1 |
| 819 | Baby Pink-LT | 223 | 87 | 208 | 82 | 195 | 77 |
| 822 | Beige Gray-LT | 23 | 8 | 21 | 8 | 20 | 7 |
| 823 | Navy Blue-DK | 796 | 313 | 743 | 292 | 696 | 274 |
| 830 | Golden Olive-DK | 71 | 28 | 66 | 26 | 62 | 24 |
| 844 | Beaver Brown-UL DK | 878 | 345 | 819 | 322 | 768 | 302 |
| 926 | Gray Green-MD | 13 | 5 | 12 | 4 | 11 | 4 |
| 927 | Gray Green-LT | 12 | 5 | 11 | 4 | 11 | 4 |
| 932 | Antique Blue-LT | 3 | 1 | 2 | 1 | 2 | 1 |
| 935 | Avocado Green-DK | 650 | 256 | 607 | 239 | 569 | 224 |
| 937 | Avocado Green-MD | 260 | 102 | 242 | 95 | 227 | 89 |
| 938 | Coffee Brown-UL DK | 2394 | 942 | 2234 | 880 | 2095 | 825 |
| 948 | Peach-VY LT | 264 | 104 | 246 | 97 | 231 | 91 |
| 950 | Desert Sand-LT | 185 | 72 | 172 | 67 | 161 | 63 |
| 951 | Tawny-LT | 33 | 13 | 31 | 12 | 29 | 11 |
| 963 | Dusty Rose-UL VY LT | 86 | 33 | 80 | 31 | 75 | 29 |
| 975 | Golden Brown-DK | 42 | 16 | 39 | 15 | 37 | 14 |
| 987 | Forest Green-DK | 185 | 73 | 173 | 68 | 162 | 64 |
| 3012 | Khaki Green-MD | 64 | 24 | 59 | 23 | 56 | 21 |
| 3021 | Brown Gray-VY DK | 751 | 295 | 701 | 275 | 657 | 258 |
| 3032 | Mocha Brown-MD | 66 | 26 | 61 | 24 | 57 | 23 |
| 3041 | Antique Violet-MD | 38 | 15 | 35 | 14 | 33 | 13 |
| 3052 | Green Gray-MD | 141 | 55 | 132 | 52 | 124 | 48 |
| 3328 | Salmon-DK | 80 | 31 | 74 | 29 | 70 | 27 |
| 3346 | Hunter Green | 258 | 102 | 241 | 95 | 226 | 89 |
| 3347 | Yellow Green-MD | 143 | 56 | 134 | 52 | 125 | 49 |
| 3362 | Pine Green-DK | 555 | 218 | 518 | 203 | 485 | 191 |
| 3363 | Pine Green-MD | 91 | 35 | 85 | 33 | 79 | 31 |
| 3685 | Mauve-DK | 9 | 3 | 8 | 3 | 8 | 3 |
| 3712 | Salmon-MD | 39 | 15 | 36 | 14 | 34 | 13 |
| 3716 | Dusty Rose-VY LT | 28 | 10 | 26 | 10 | 24 | 9 |
| 3721 | Shell Pink-DK | 95 | 37 | 89 | 35 | 83 | 33 |
| 3722 | Shell Pink-MD | 39 | 15 | 37 | 14 | 34 | 14 |
| 3747 | Blue Violet-VY LT | 2 | 1 | 2 | 1 | 2 | 1 |
| 3768 | Gray Green-DK | 26 | 10 | 24 | 9 | 23 | 8 |
| 3770 | Tawny-VY LT | 188 | 73 | 175 | 68 | 164 | 64 |
| 3772 | Desert Sand-VY DK | 165 | 64 | 154 | 60 | 144 | 56 |
| 3774 | Desert Sand-VY LT | 64 | 24 | 59 | 23 | 56 | 21 |

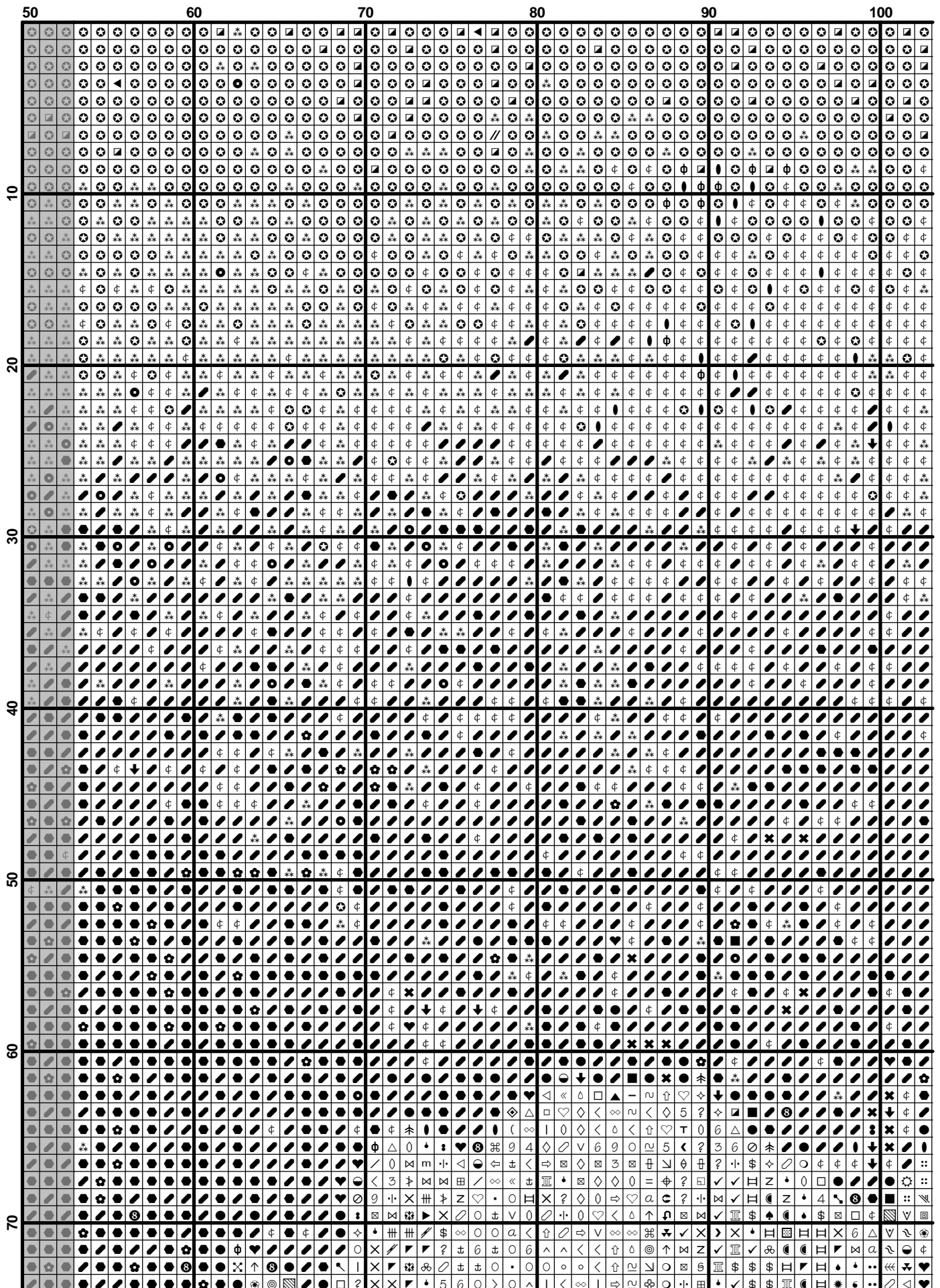
Copyright (c) 2007-, Golden Kite (Golden K.)

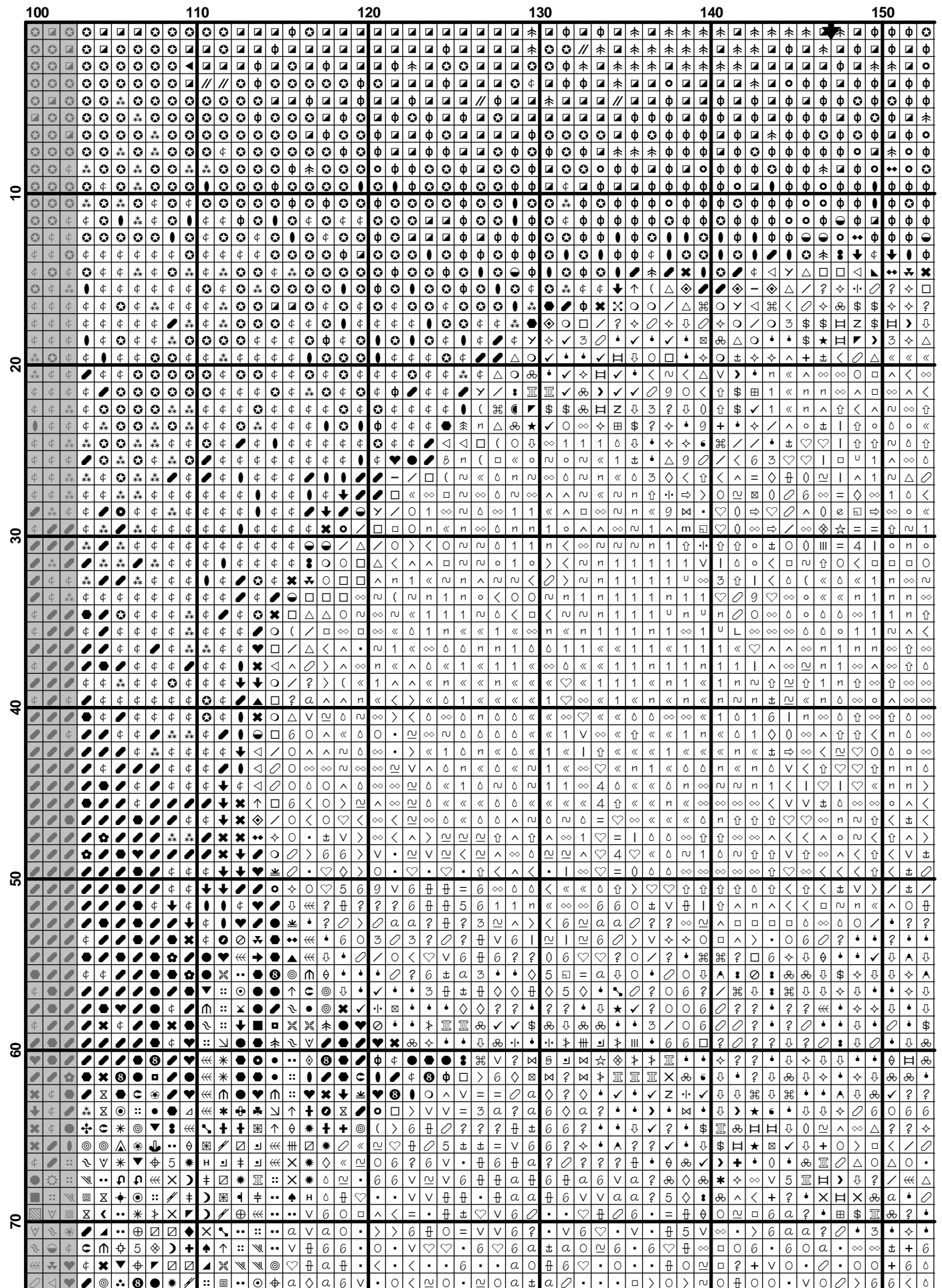
Internet: www.goldenkite.com

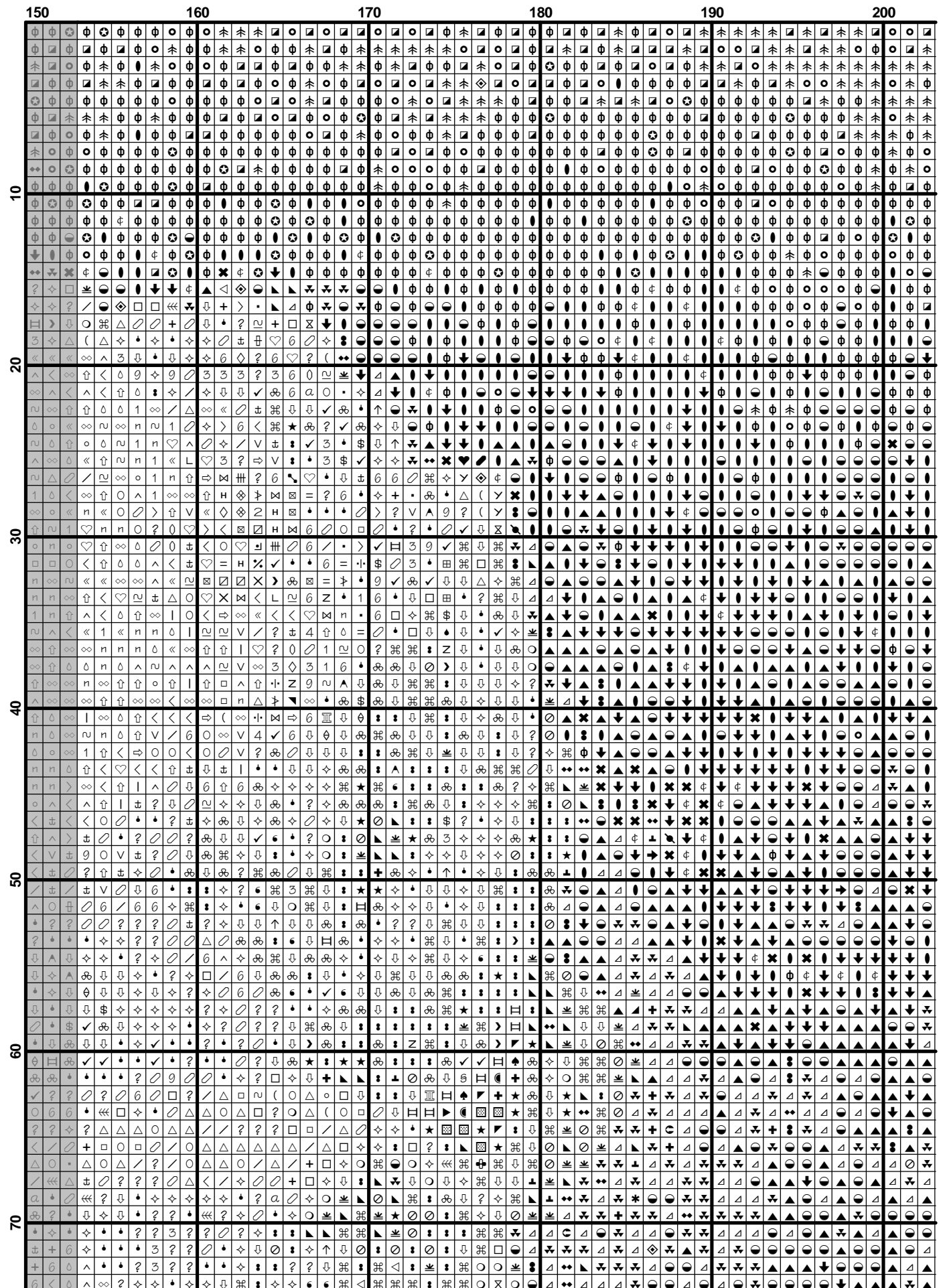
e-mail: info@goldenkite.com

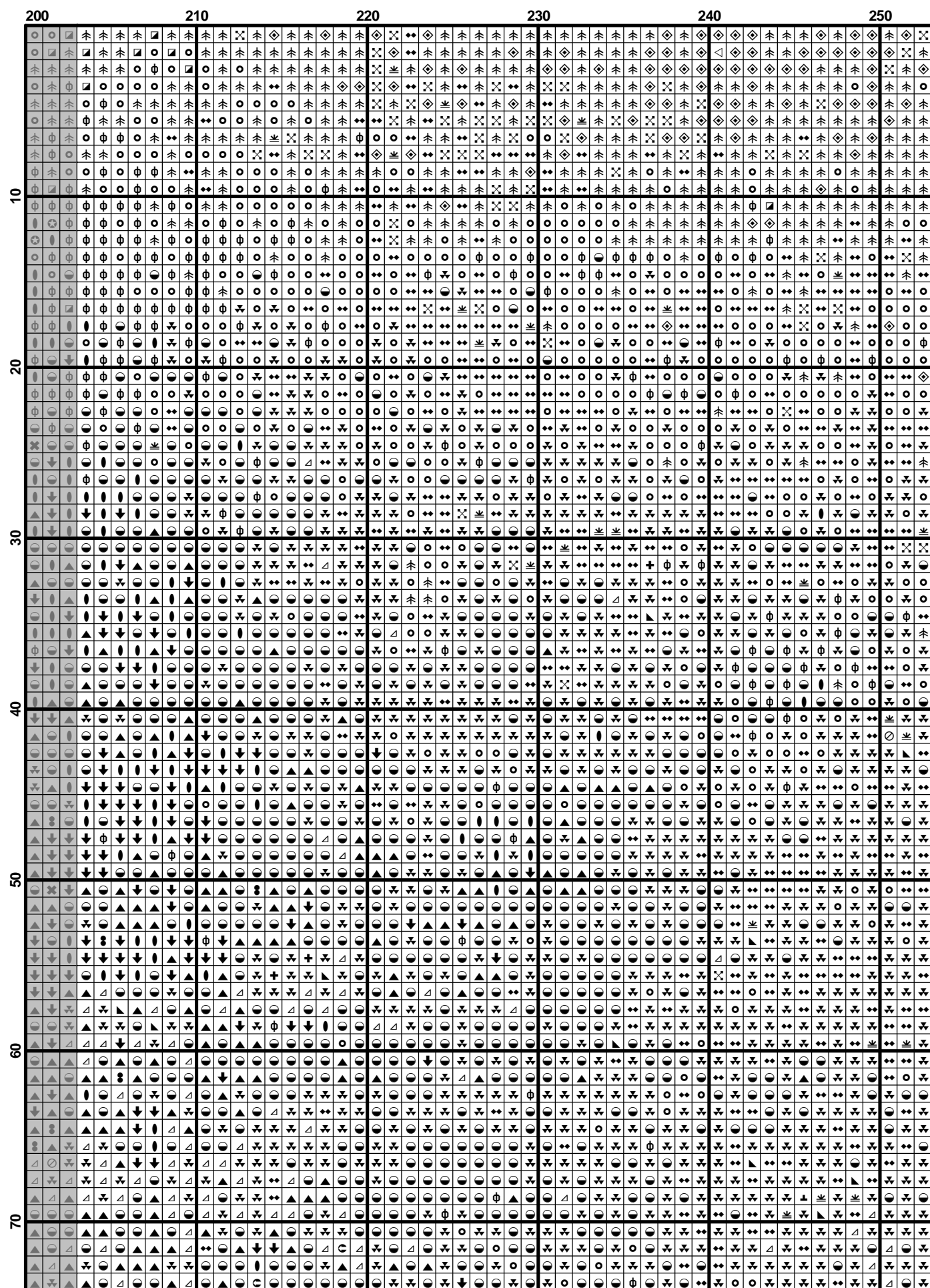
| | | | | | | | |
|------|----------------------|------|-----|------|-----|-----|-----|
| 3778 | Terra Cotta-LT | 186 | 73 | 173 | 68 | 163 | 64 |
| 3779 | Terra Cotta-UL VY LT | 192 | 75 | 179 | 70 | 168 | 66 |
| 3781 | Mocha Brown-DK | 1108 | 436 | 1034 | 407 | 970 | 381 |
| 3787 | Brown Gray-DK | 699 | 275 | 653 | 257 | 612 | 241 |
| 3790 | Beige Gray-UL DK | 532 | 209 | 497 | 195 | 466 | 183 |
| 3799 | Pewter Gray-VY DK | 1081 | 425 | 1009 | 397 | 946 | 372 |
| 3802 | Antique Mauve-VY DK | 45 | 17 | 42 | 16 | 39 | 15 |
| 3820 | Straw-DK | 3 | 1 | 2 | 1 | 2 | 1 |
| 3822 | Straw-LT | 1 | 1 | 1 | 1 | 1 | 1 |
| 3826 | Golden Brown | 8 | 3 | 7 | 2 | 7 | 2 |
| 3828 | Hazelnut Brown | 60 | 24 | 56 | 22 | 53 | 21 |
| 3830 | Terra Cotta-MD | 53 | 21 | 50 | 19 | 47 | 18 |
| 3856 | Mahogany-UL VY LT | 21 | 8 | 20 | 7 | 19 | 7 |
| 3858 | Rosewood-MD | 242 | 95 | 226 | 89 | 212 | 83 |
| 3859 | Rosewood-LT | 87 | 34 | 81 | 32 | 76 | 30 |
| 3861 | Cocoa-LT | 48 | 19 | 44 | 17 | 42 | 16 |
| 3865 | Winter White | 28 | 10 | 26 | 10 | 24 | 9 |

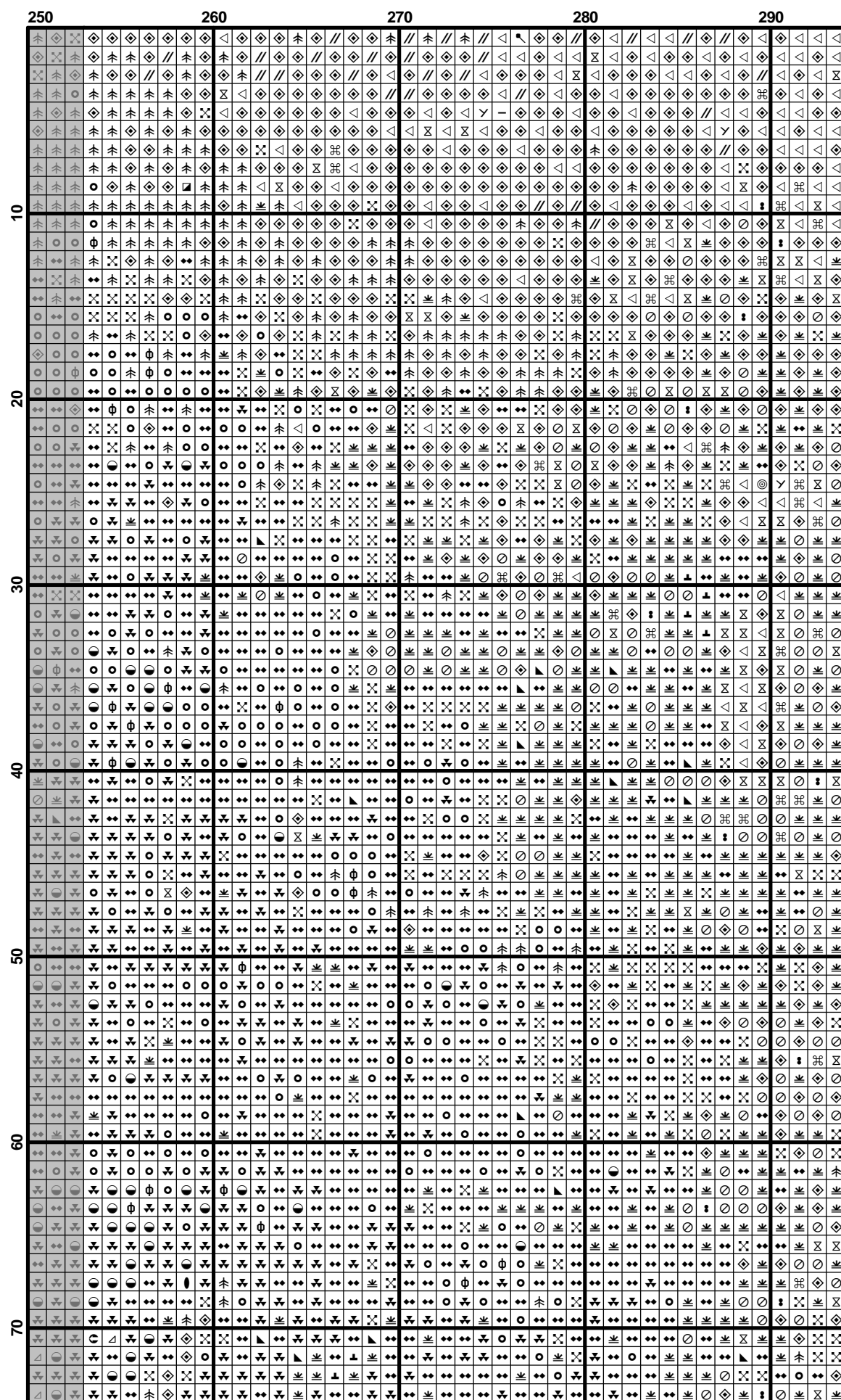


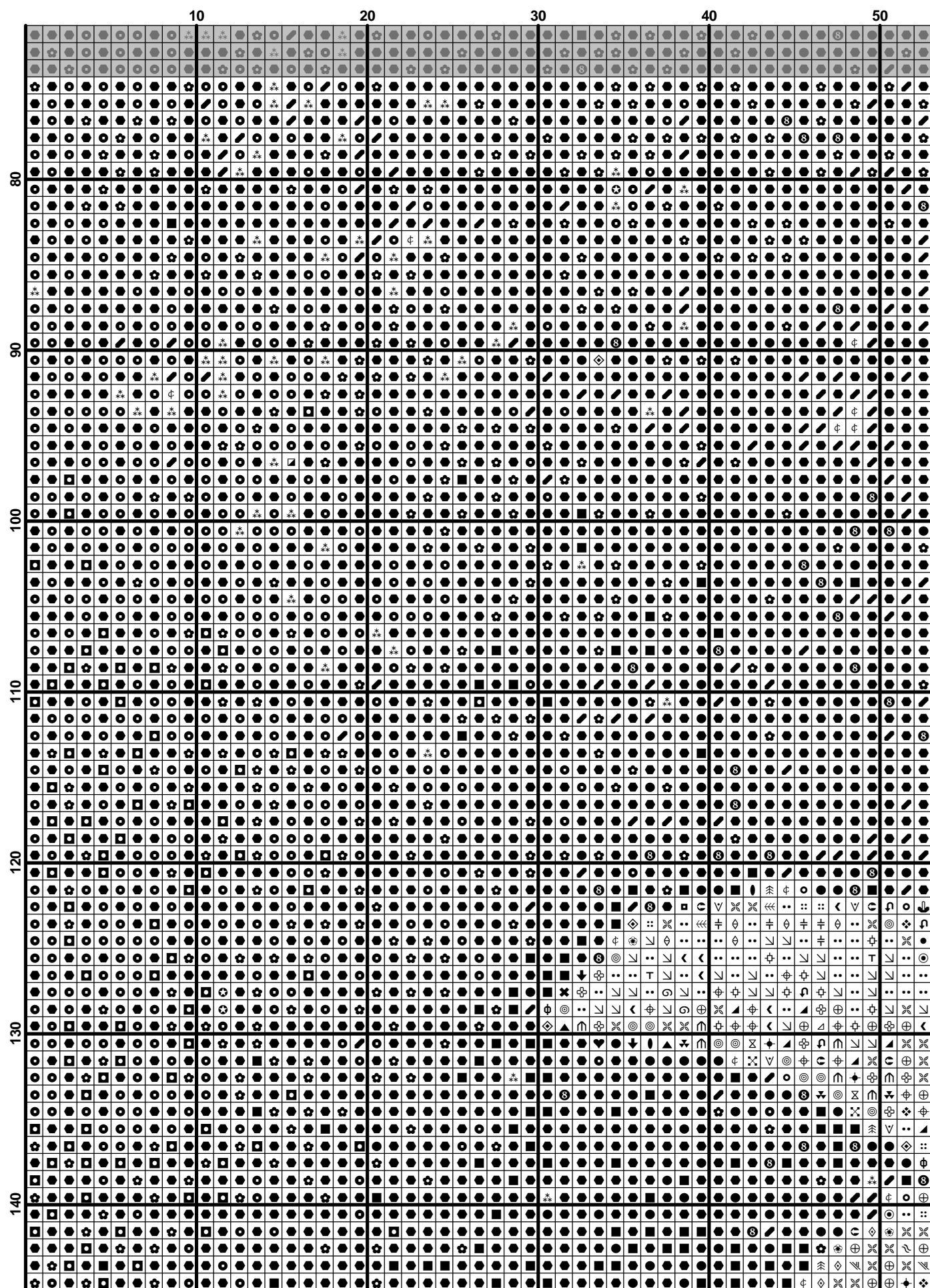




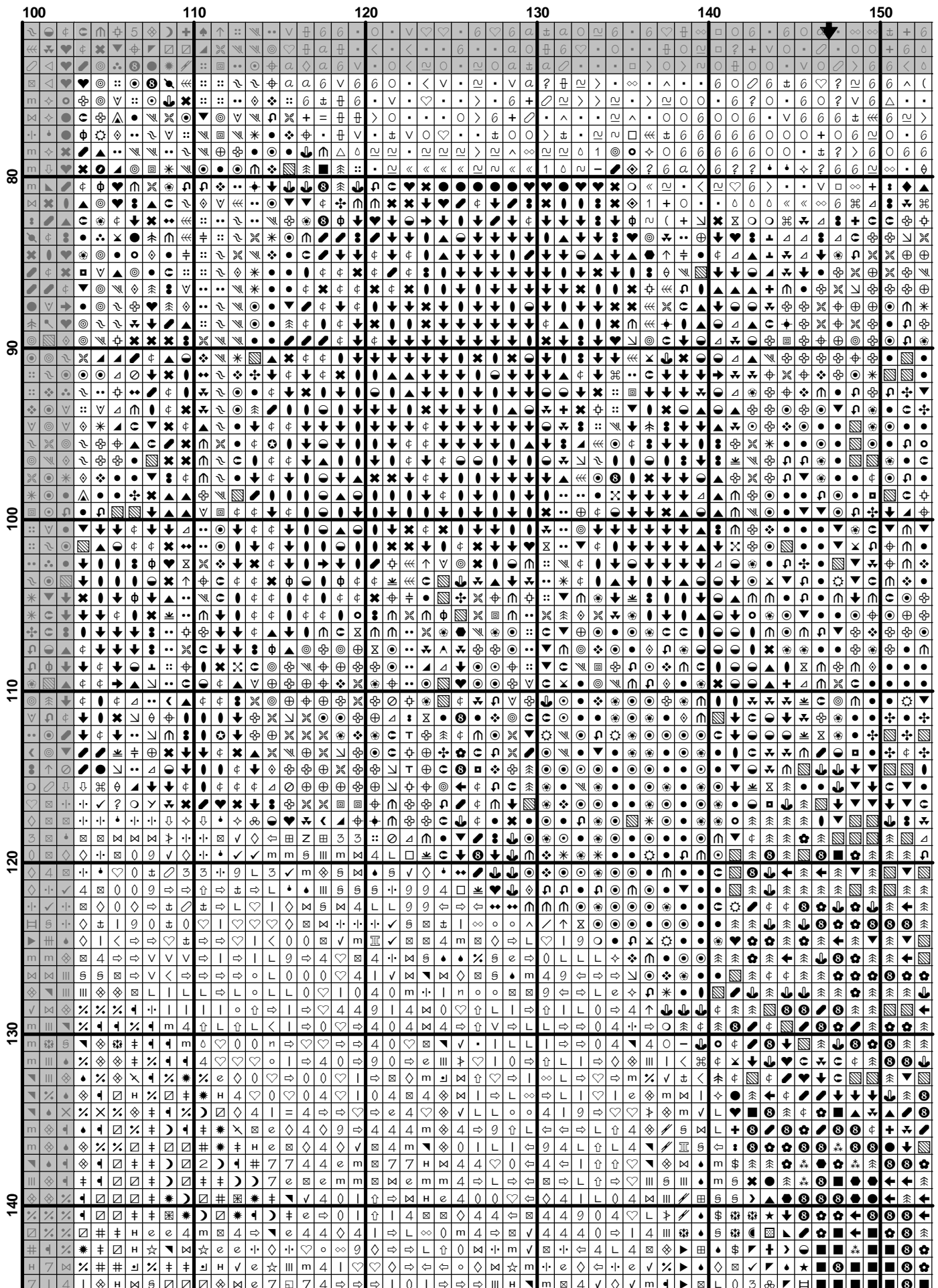


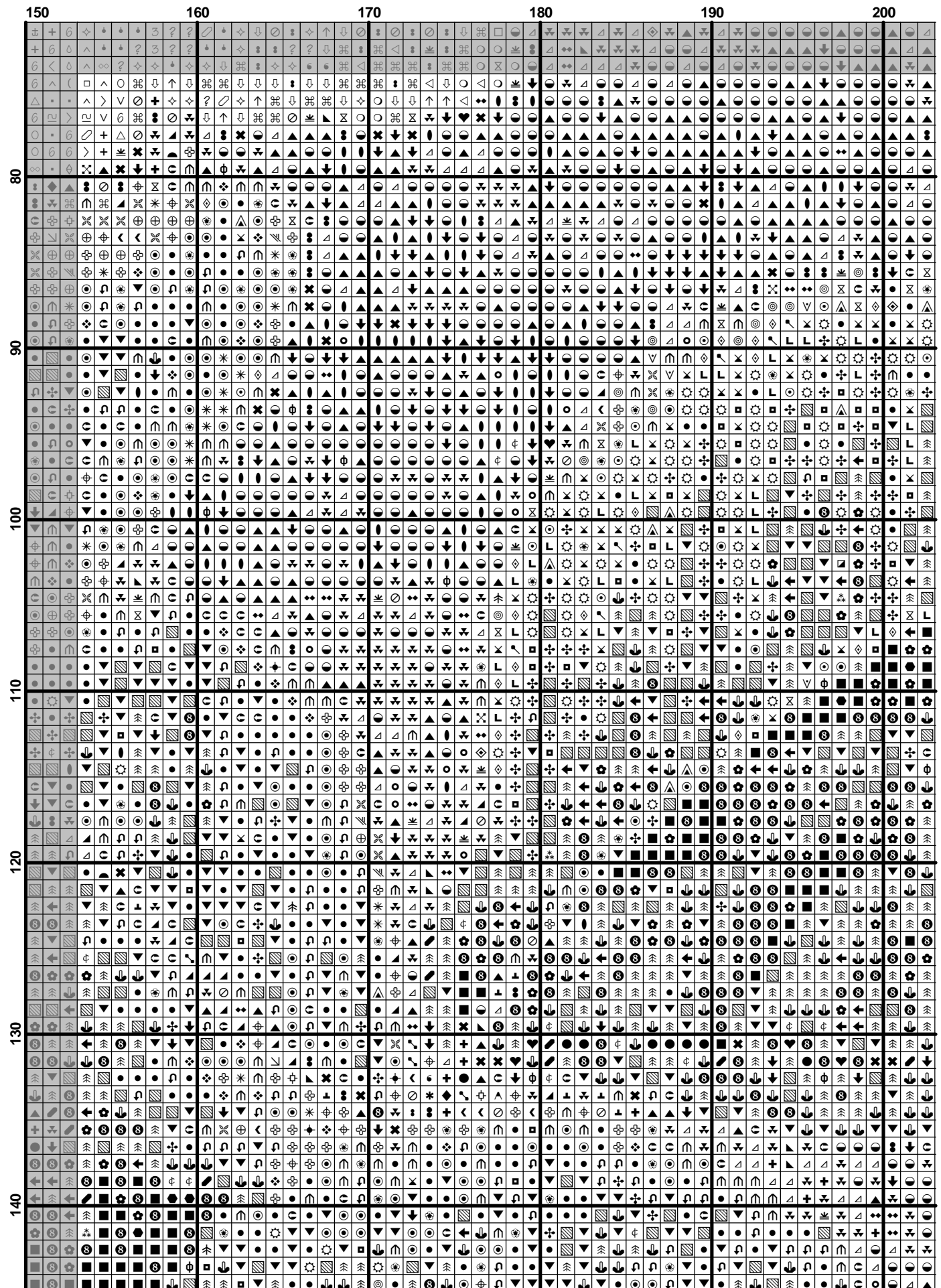


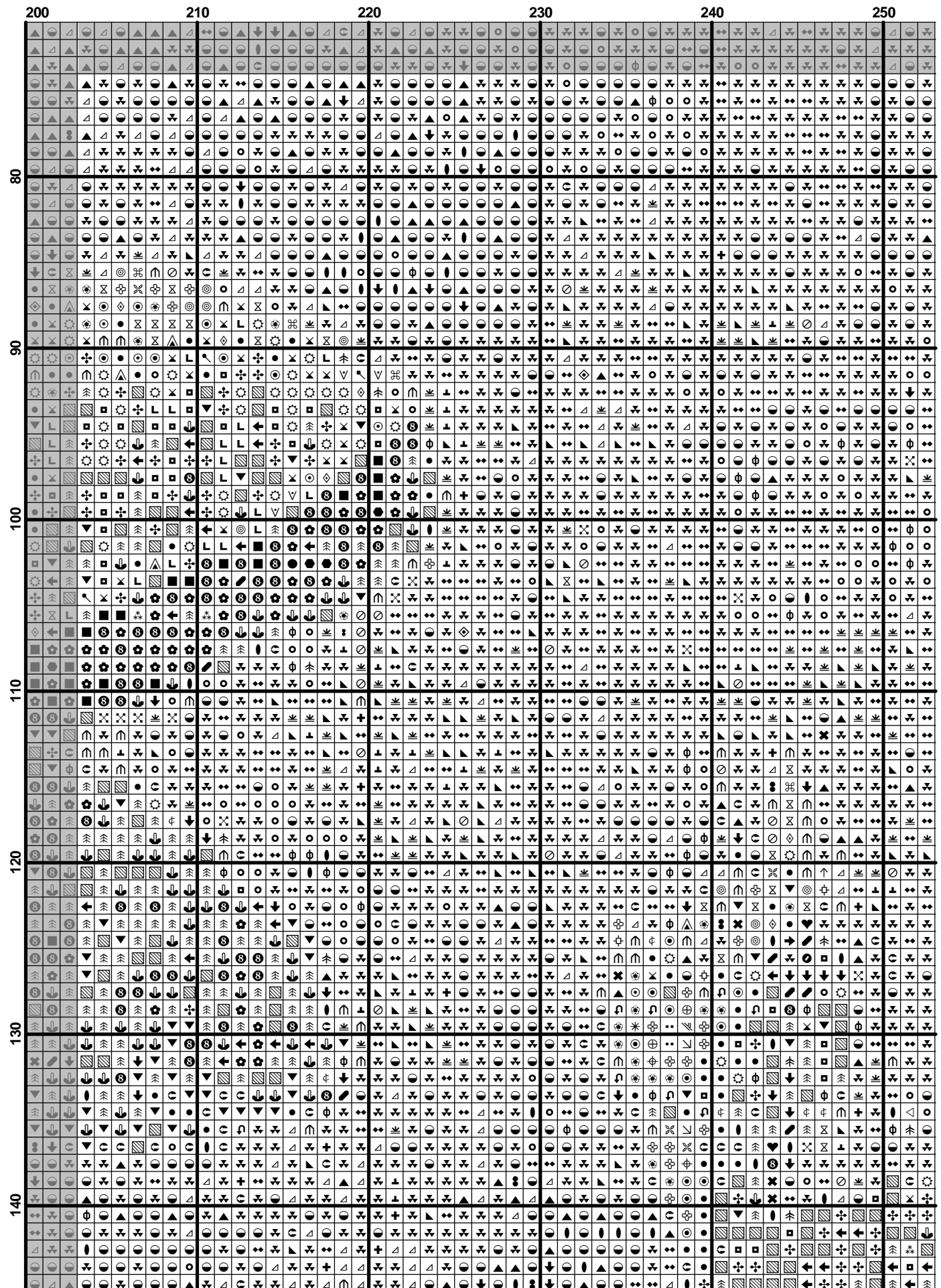


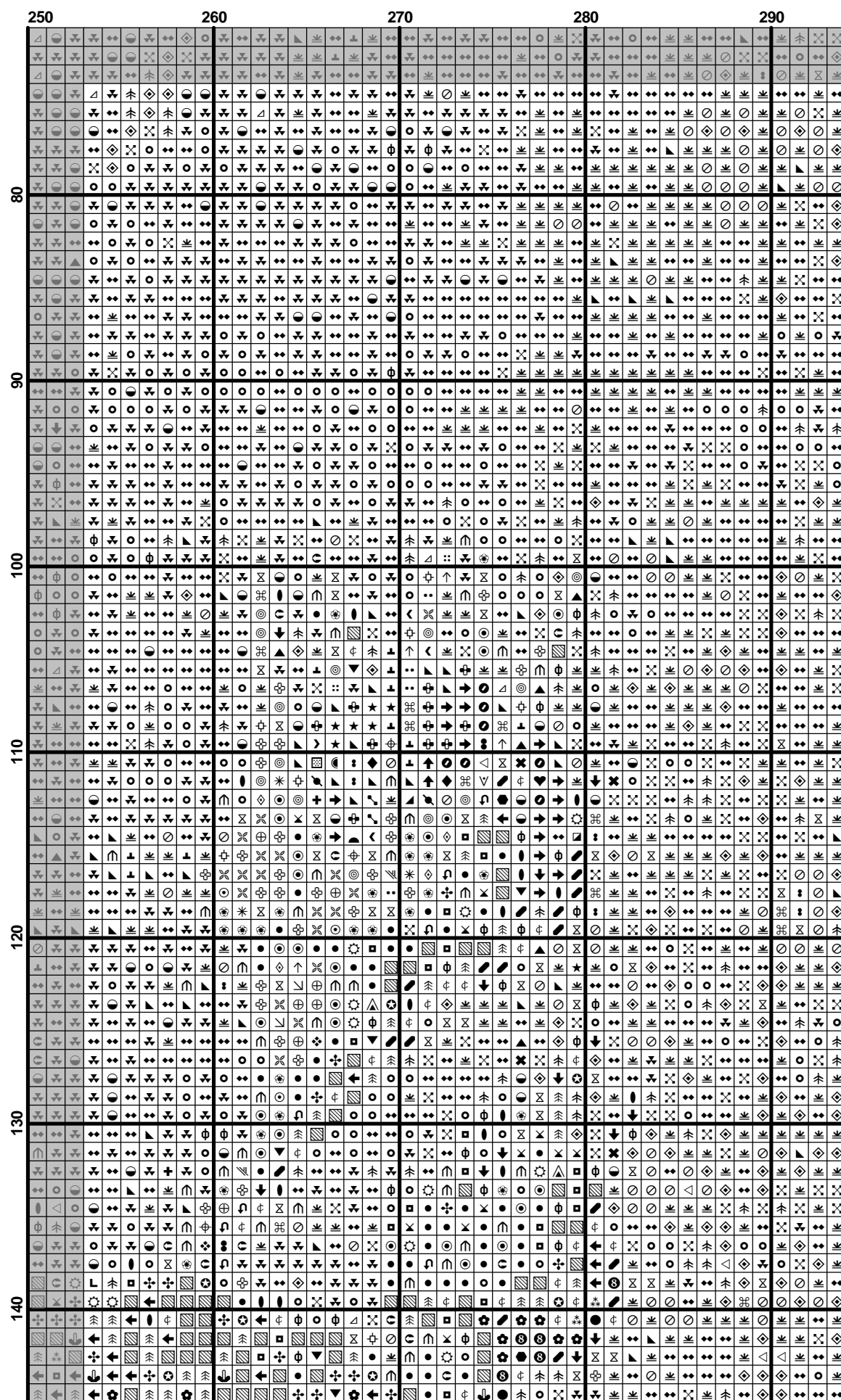


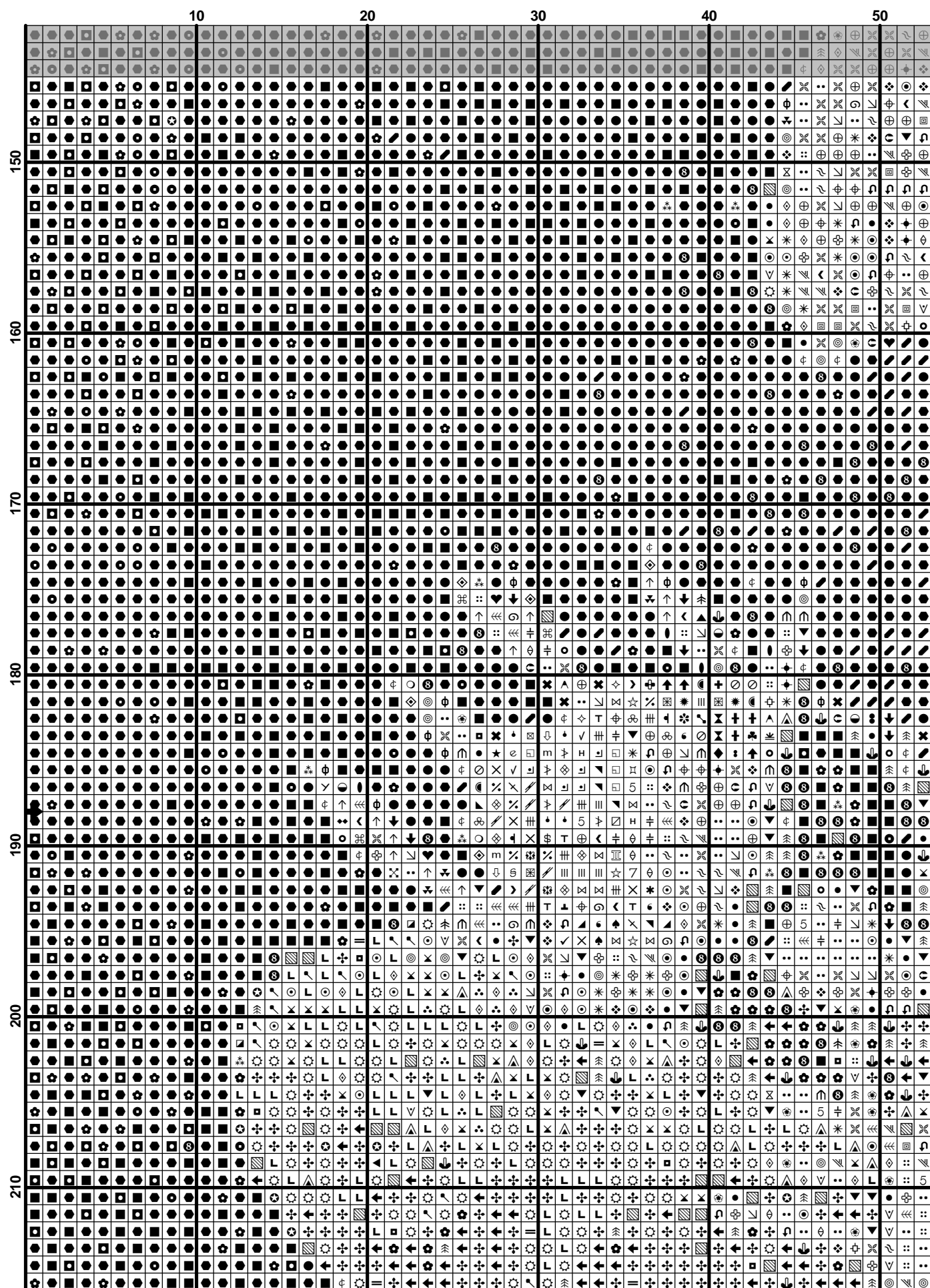












$$(20) \quad \dots \qquad \qquad \qquad (21)$$

$$(21) \quad \mathcal{L}(\mathcal{A}) = \mathcal{L}(\mathcal{B}) \quad (22)$$

