

# 1152 Sun Moon



**This pattern may not be copied, sold or in any other way handled in any way that violates the international copyright laws. If you get hold of this pattern (and or this document) in any other way than via a direct download from [www.goldenkite.com](http://www.goldenkite.com) or via a mail from us, you should report that to us at [legal\\_actions@goldenkite.com](mailto:legal_actions@goldenkite.com) .**

Copyright ( c ) 2007-, Golden Kite. All rights reserved.

Copyright ( c ) 2007-, Golden Kite (Golden K.)  
Internet: [www.goldenkite.com](http://www.goldenkite.com)

e-mail: [info@goldenkite.com](mailto:info@goldenkite.com)

## Instructions

Thank you for choosing Golden Kite products!  
We hope you will have lots of fun with this cross-stitch pattern!

### Fabric

Press the fabric with an iron if needed. A good thing to prevent the fabric from fraying is to machine zigzag the edges.

On large patterns, it is easiest to start from the upper left corner of the design. Make sure you have the proper margins before starting and that the fabric piece is of the correct size. The best way to verify this is to count all stitch positions on the fabric from the upper left corner downwards and to the right to make sure there is enough space for the design.

Some prefer to start in the center of the design instead. To locate the center of the fabric, fold the fabric in half both vertically and horizontally. The center is located where these two folds meet.

### Stitches

Each length of DMC tread consists of six strands.  
Use two of these strands for all stitches.

Note that some colors may be mixes (or blends) between two different pure colors. In that case take one strand of the two colors each and thread the two strands into the needle at the same time for stitching.

All stitches are full cross-stitches. No half-stitching and no back-stitching is necessary in this pattern.

All cross-stitches will be worked into the holes in the fabric from left to right. Always use the larger holes in the fabric for the stitches. Adjacent stitches should meet in the same hole. Make sure all stitches cross in the same direction.

Please be careful when washing the finished embroidery! The cotton thread may bleed when washed. Only hand wash it in lukewarm water. Remove excess water by roll it in a towel and lay it flat to air dry. Natural fabrics may shrink slightly when washed. We do not recommend washing the embroidery if not absolutely necessary and we take no responsibility for any damage that may occur.

*When you start using this product you agree that Golden Kite (Golden K), or any people working for or in association with Golden Kite (Golden K), cannot be set responsible for any physical, mental, economical or other type of damage caused by this product (including this document, pattern, threads, needles and any other parts received by you from Golden Kite (Golden K)).*

**This pattern may not be copied, sold or in any other way handled in any way that violates the international copyright laws. If you get hold of this pattern (and or this document) in any other way than via a direct download from [www.goldenkite.com](http://www.goldenkite.com) or via a mail from us, you should report that to us at [legal\\_actions@goldenkite.com](mailto:legal_actions@goldenkite.com) .**

## Sun Moon

Stitch Count	
Horizontal:	450
Vertical:	459

Recommended Fabric Color
Antique White

This table tells the size of the pattern (without any margins) and the size of the fabric required to stitch the pattern (including recommended margins). 3 inch margins have been added on each side in the 'Including Margins' row.

The sizes are given for 14, 16 and 18 stitches per inch fabrics.

Make sure to use the 'Including Margins' row when cutting the piece of fabric to be used. Also make sure that 3 inch margins are enough for your stitching technique and add more margin areas if necessary.

	14				16				18			
	Width		Height		Width		Height		Width		Height	
	cm	inch	cm	inch	cm	inch	cm	inch	cm	inch	cm	inch
Pattern:	82	32.14	84	32.78	72	28.12	73	28.68	64	25	65	25.5
Including Margins:	98	39	100	39	88	35	89	35	80	32	81	32
	10				12				24			
	Width		Height		Width		Height		Width		Height	
	cm	inch	cm	inch	cm	inch	cm	inch	cm	inch	cm	inch
Pattern:	114	44.99	117	45.89	95	37.49	98	38.24	47	18.74	49	19.12
Including Margins:	130	51	133	52	111	44	114	45	63	25	65	26
	25				26				27			
	Width		Height		Width		Height		Width		Height	
	cm	inch	cm	inch	cm	inch	cm	inch	cm	inch	cm	inch
Pattern:	45	17.99	47	18.35	44	17.3	45	17.65	42	16.66	43	16.99
Including Margins:	61	24	63	25	60	24	61	24	58	23	59	23
	28				30				32			
	Width		Height		Width		Height		Width		Height	
	cm	inch	cm	inch	cm	inch	cm	inch	cm	inch	cm	inch
Pattern:	41	16.07	42	16.39	38	14.99	39	15.29	35	14.06	36	14.34
Including Margins:	57	23	58	23	54	21	55	22	51	21	52	21

Solid Color Stitches. Use two strands of the specified color for these stitches.		
Symbol	DMC	Name
◊	307	Lemon
■	310	Black
7	352	Coral-LT
)	353	Peach
✱	420	Hazelnut Brown-DK
✕	435	Brown-VY LT
	437	Tan-LT
•	445	Lemon-LT
⦿	471	Avocado Green-VY LT
⊗	501	Blue Green-DK
▲	502	Blue Green
↖	503	Blue Green-MD
✕	522	Fern Green
✓	523	Fern Green-LT
•	524	Fern Green-VY LT
○	543	Beige Brown-UL VY LT
★	611	Drab Brown
✕	612	Drab Brown-LT
e	613	Drab Brown-VY LT
⬆	640	Beige Gray-VY DK
T	642	Beige Gray-DK
H	644	Beige Gray-MD
∞	677	Old Gold-VY LT
➤	680	Old Gold-DK
⊗	725	Topaz
⬆	727	Topaz-VY LT
▴	732	Olive Green
⦶	733	Olive Green-MD
⊕	734	Olive Green-LT
♡	739	Tan-UL VY LT
◦	744	Yellow-Pale
1	746	Off White
▣	780	Topaz-UL VY DK
↘	783	Topaz-MD
<	822	Beige Gray-LT
⦶	830	Golden Olive-DK
⦶	832	Golden Olive

⦶	833	Golden Olive-LT
7	834	Golden Olive-VY LT
●	838	Beige Brown-VY DK
⦶	839	Beige Brown-DK
∞	841	Beige Brown-LT
⦿	869	Hazelnut Brown-VY DK
↖	924	Gray Green-VY DK
✕	926	Gray Green-MD
✕	927	Gray Green-LT
⬆	937	Avocado Green-MD
●	938	Coffee Brown-UL DK
H	3013	Khaki Green-LT
✕	3021	Brown Gray-VY DK
⦶	3045	Yellow Beige-DK
◇	3046	Yellow Beige-MD
H	3052	Green Gray-MD
∞	3053	Green Gray
∞	3078	Golden Yellow-VY LT
⦿	3768	Gray Green-DK
H	3770	Tawny-VY LT
⦿	3781	Mocha Brown-DK
⦿	3787	Brown Gray-DK
⦿	3799	Pewter Gray-VY DK
⦿	3815	Celadon Green-DK
m	3820	Straw-DK
⇒	3822	Straw-LT
◊	3823	Yellow-UL Pale
+	3824	Apricot-LT
⬅	3825	Pumpkin-Pale
⦶	3828	Hazelnut Brown
⦶	3829	Old Gold-VY DK
⦶	3849	Teal Green-LT
⦶	3852	Straw-VY DK
↘	3854	Autumn Gold-MD
↔	3856	Mahogany-UL VY LT
●	3862	Mocha Beige-DK
//	3863	Mocha Beige-MD
U	3865	Winter White
±	3866	Mocha Brown-UL VY LT

Blend Stitches. Use one strand of each of DMC1 and DMC2 for these stitches.				
Symbol	DMC1	Name1	DMC2	Name2
▲	3862	Mocha Beige-DK	3863	Mocha Beige-MD
=	613	Drab Brown-VY LT	677	Old Gold-VY LT
↖	370	Mustard-MD	611	Drab Brown
◇	370	Mustard-MD	420	Hazelnut Brown-DK
⦶	3862	Mocha Beige-DK	611	Drab Brown
✱	501	Blue Green-DK	3799	Pewter Gray-VY DK
✕	3052	Green Gray-MD	611	Drab Brown
3	307	Lemon	3820	Straw-DK
◆	838	Beige Brown-VY DK	3781	Mocha Brown-DK

⌂	420	Hazelnut Brown-DK	435	Brown-VY LT
4	3856	Mahogany-UL VY LT	3046	Yellow Beige-MD
▼	830	Golden Olive-DK	839	Beige Brown-DK
►	3862	Mocha Beige-DK	3787	Brown Gray-DK
◄	3346	Hunter Green	3787	Brown Gray-DK
☾	3346	Hunter Green	611	Drab Brown
⊕	839	Beige Brown-DK	3346	Hunter Green
♠	830	Golden Olive-DK	3862	Mocha Beige-DK
⬠	839	Beige Brown-DK	3862	Mocha Beige-DK
⋯	926	Gray Green-MD	503	Blue Green-MD
△	613	Drab Brown-VY LT	739	Tan-UL VY LT
✱	640	Beige Gray-VY DK	3787	Brown Gray-DK
✦	420	Hazelnut Brown-DK	611	Drab Brown
z	833	Golden Olive-LT	3829	Old Gold-VY DK
▷	369	Pistachio Green-VY LT	739	Tan-UL VY LT
«	746	Off White	3770	Tawny-VY LT
⊕	435	Brown-VY LT	370	Mustard-MD
▣	612	Drab Brown-LT	356	Terra Cotta-MD
⋮	3778	Terra Cotta-LT	3863	Mocha Beige-MD
➔	924	Gray Green--VY DK	3768	Gray Green-DK
▲	3787	Brown Gray-DK	839	Beige Brown-DK
●	3021	Brown Gray-VY DK	3799	Pewter Gray-VY DK
○	420	Hazelnut Brown-DK	830	Golden Olive-DK
✚	3768	Gray Green-DK	502	Blue Green
c	3021	Brown Gray-VY DK	839	Beige Brown-DK
∅	3863	Mocha Beige-MD	370	Mustard-MD
L	677	Old Gold-VY LT	3856	Mahogany-UL VY LT
↑	839	Beige Brown-DK	3799	Pewter Gray-VY DK
· ·	738	Tan-VY LT	524	Fern Green-VY LT
◁	524	Fern Green-VY LT	3864	Mocha Beige-LT
‡	3053	Green Gray	3864	Mocha Beige-LT
ℓ	738	Tan-VY LT	613	Drab Brown-VY LT
‡	613	Drab Brown-VY LT	369	Pistachio Green-VY LT
g	613	Drab Brown-VY LT	3856	Mahogany-UL VY LT
v	369	Pistachio Green-VY LT	543	Beige Brown-UL VY LT
(	3823	Yellow-UL Pale	543	Beige Brown-UL VY LT
§	841	Beige Brown-LT	3013	Khaki Green-LT
x	3052	Green Gray-MD	522	Fern Green
⊕	522	Fern Green	3863	Mocha Beige-MD
✚	640	Beige Gray-VY DK	3346	Hunter Green
*	3862	Mocha Beige-DK	3346	Hunter Green
•	522	Fern Green	642	Beige Gray-DK
◀	3863	Mocha Beige-MD	642	Beige Gray-DK
v	437	Tan-LT	612	Drab Brown-LT
□	677	Old Gold-VY LT	739	Tan-UL VY LT
⌘	524	Fern Green-VY LT	3013	Khaki Green-LT
—	738	Tan-VY LT	3013	Khaki Green-LT
:	738	Tan-VY LT	677	Old Gold-VY LT
>	3078	Golden Yellow-VY LT	3856	Mahogany-UL VY LT
^	677	Old Gold-VY LT	727	Topaz-VY LT
‡	738	Tan-VY LT	727	Topaz-VY LT
=	3787	Brown Gray-DK	502	Blue Green
⊕	3787	Brown Gray-DK	501	Blue Green-DK
⌘	924	Gray Green--VY DK	501	Blue Green-DK
●	823	Navy Blue-DK	895	Hunter Green-VY DK
+	501	Blue Green-DK	3815	Celadon Green-DK
∞	3866	Mocha Brown-UL VY LT	3770	Tawny-VY LT
z	3820	Straw-DK	3045	Yellow Beige-DK
y	3820	Straw-DK	3828	Hazelnut Brown

Copyright ( c ) 2007-, Golden Kite (Golden K.)

Internet: [www.goldenkite.com](http://www.goldenkite.com)

e-mail: [info@goldenkite.com](mailto:info@goldenkite.com)

⦿	370	Mustard-MD	3828	Hazelnut Brown
\$	3778	Terra Cotta-LT	3828	Hazelnut Brown
○	3778	Terra Cotta-LT	3820	Straw-DK
#	3820	Straw-DK	370	Mustard-MD
←	501	Blue Green-DK	3021	Brown Gray-VY DK
↖	839	Beige Brown-DK	501	Blue Green-DK
♥	501	Blue Green-DK	823	Navy Blue-DK
♣	3787	Brown Gray-DK	3799	Pewter Gray-VY DK
♠	839	Beige Brown-DK	937	Avocado Green-MD
↓	501	Blue Green-DK	938	Coffee Brown-UL DK
‡	612	Drab Brown-LT	3778	Terra Cotta-LT
	3828	Hazelnut Brown	437	Tan-LT
..	3778	Terra Cotta-LT	437	Tan-LT
⦿	370	Mustard-MD	612	Drab Brown-LT
?	371	Mustard	522	Fern Green
*	370	Mustard-MD	3052	Green Gray-MD
⊠	937	Avocado Green-MD	3346	Hunter Green
⊞	3828	Hazelnut Brown	3045	Yellow Beige-DK
♠	3045	Yellow Beige-DK	3863	Mocha Beige-MD
▲	3045	Yellow Beige-DK	3778	Terra Cotta-LT
▲	502	Blue Green	3815	Celadon Green-DK
♠	3815	Celadon Green-DK	3768	Gray Green-DK
†	3815	Celadon Green-DK	924	Gray Green--VY DK
α	834	Golden Olive-VY LT	3822	Straw-LT
5	3820	Straw-DK	743	Yellow-MD
⊕	435	Brown-VY LT	3778	Terra Cotta-LT
♠	3815	Celadon Green-DK	3787	Brown Gray-DK
6	3024	Brown Gray-VY LT	927	Gray Green-LT
√	3854	Autumn Gold-MD	834	Golden Olive-VY LT
⊠	437	Tan-LT	3046	Yellow Beige-MD
6	3822	Straw-LT	3046	Yellow Beige-MD
/	743	Yellow-MD	834	Golden Olive-VY LT
↑	3778	Terra Cotta-LT	3825	Pumpkin-Pale
☆	3013	Khaki Green-LT	3046	Yellow Beige-MD
⊙	926	Gray Green-MD	3848	Teal Green-MD
⊙	927	Gray Green-LT	3849	Teal Green-LT
L	3848	Teal Green-MD	503	Blue Green-MD
⊠	612	Drab Brown-LT	642	Beige Gray-DK
⊙	732	Olive Green	471	Avocado Green-VY LT
⊙	3820	Straw-DK	3852	Straw-VY DK
□	444	Lemon-DK	3820	Straw-DK
::	444	Lemon-DK	3852	Straw-VY DK
⊠	3346	Hunter Green	471	Avocado Green-VY LT
♦♦	3829	Old Gold-VY DK	780	Topaz-UL VY DK
⦿	3863	Mocha Beige-MD	640	Beige Gray-VY DK
✱	501	Blue Green-DK	3740	Antique Violet-DK
↓	3013	Khaki Green-LT	612	Drab Brown-LT
⊠	612	Drab Brown-LT	3046	Yellow Beige-MD
■	830	Golden Olive-DK	3346	Hunter Green
¾	3045	Yellow Beige-DK	435	Brown-VY LT
6	471	Avocado Green-VY LT	611	Drab Brown
	677	Old Gold-VY LT	369	Pistachio Green-VY LT
↓	3787	Brown Gray-DK	924	Gray Green--VY DK
⊠	937	Avocado Green-MD	830	Golden Olive-DK
⊙	895	Hunter Green-VY DK	924	Gray Green--VY DK
■	310	Black	938	Coffee Brown-UL DK



This table specifies how much thread of each color is required to stitch this pattern. It is good to know that one complete DMC skein contains 313 inches (795 cm) thread.

DMC	Name	Usage (cm)	Usage (inch)	Usage (cm)	Usage (inch)	Usage (cm)	Usage (inch)
		14		16		18	
307	Lemon	63	24	60	23	54	21
310	Black	1674	659	1595	627	1435	564
352	Coral-LT	7	2	6	2	6	2
353	Peach	19	7	18	7	16	6
356	Terra Cotta-MD	86	33	82	32	74	29
369	Pistachio Green-VY LT	183	72	174	68	157	61
370	Mustard-MD	2894	1139	2757	1085	2481	976
371	Mustard	461	181	439	172	395	155
420	Hazelnut Brown-DK	754	296	718	282	647	254
435	Brown-VY LT	487	191	464	182	418	164
437	Tan-LT	886	348	844	332	759	298
444	Lemon-DK	24	9	23	9	20	7
445	Lemon-LT	191	75	182	71	164	64
471	Avocado Green-VY LT	164	64	156	61	141	55
501	Blue Green-DK	1980	779	1885	742	1697	668
502	Blue Green	280	110	266	104	240	94
503	Blue Green-MD	52	20	49	19	44	17
522	Fern Green	1032	406	982	386	884	348
523	Fern Green-LT	51	20	49	19	44	17
524	Fern Green-VY LT	740	291	704	277	634	249
543	Beige Brown-UL VY LT	525	206	500	196	450	177
611	Drab Brown	1582	622	1507	593	1356	533
612	Drab Brown-LT	4493	1768	4279	1684	3851	1516
613	Drab Brown-VY LT	1579	621	1503	591	1353	532
640	Beige Gray-VY DK	382	150	364	143	328	129
642	Beige Gray-DK	1072	422	1021	401	919	361
644	Beige Gray-MD	84	33	80	31	72	28
677	Old Gold-VY LT	1848	727	1760	692	1584	623
680	Old Gold-DK	26	10	24	9	22	8
725	Topaz	36	14	34	13	30	11
727	Topaz-VY LT	336	132	320	125	288	113
732	Olive Green	100	39	95	37	86	33
733	Olive Green-MD	71	27	68	26	61	24
734	Olive Green-LT	421	165	401	157	361	142
738	Tan-VY LT	2210	870	2105	828	1894	745
739	Tan-UL VY LT	853	335	812	319	731	287
743	Yellow-MD	150	59	143	56	129	50
744	Yellow-Pale	370	145	352	138	317	124
746	Off White	519	204	494	194	445	175
780	Topaz-UL VY DK	32	12	31	12	28	11
783	Topaz-MD	37	14	35	13	32	12
822	Beige Gray-LT	66	25	63	24	57	22
823	Navy Blue-DK	529	208	504	198	453	178
830	Golden Olive-DK	754	296	718	282	646	254
832	Golden Olive	54	21	51	20	46	18
833	Golden Olive-LT	121	47	116	45	104	40
834	Golden Olive-VY LT	970	381	924	363	832	327
838	Beige Brown-VY DK	163	64	156	61	140	55
839	Beige Brown-DK	702	276	669	263	602	237
841	Beige Brown-LT	537	211	512	201	460	181
869	Hazelnut Brown-VY DK	81	31	77	30	69	27
895	Hunter Green-VY DK	675	265	643	253	578	227
924	Gray Green--VY DK	1957	770	1864	733	1677	660
926	Gray Green-MD	107	42	102	40	91	35

Copyright ( c ) 2007-, Golden Kite (Golden K.)

Internet: [www.goldenkite.com](http://www.goldenkite.com)

e-mail: [info@goldenkite.com](mailto:info@goldenkite.com)

927	Gray Green-LT	41	16	39	15	35	13
937	Avocado Green-MD	181	71	173	68	155	61
938	Coffee Brown-UL DK	561	220	534	210	481	189
3013	Khaki Green-LT	2879	1133	2742	1079	2468	971
3021	Brown Gray-VY DK	333	131	317	124	286	112
3024	Brown Gray-VY LT	11	4	10	3	9	3
3045	Yellow Beige-DK	1748	688	1665	655	1498	589
3046	Yellow Beige-MD	1417	557	1349	531	1214	477
3052	Green Gray-MD	1003	394	956	376	860	338
3053	Green Gray	608	239	579	227	521	205
3078	Golden Yellow-VY LT	478	188	455	179	410	161
3346	Hunter Green	568	223	541	212	487	191
3740	Antique Violet-DK	24	9	23	9	21	8
3768	Gray Green-DK	594	233	565	222	509	200
3770	Tawny-VY LT	598	235	569	224	512	201
3778	Terra Cotta-LT	279	109	265	104	239	94
3781	Mocha Brown-DK	181	71	172	67	155	61
3787	Brown Gray-DK	980	385	933	367	840	330
3799	Pewter Gray-VY DK	808	318	769	302	692	272
3815	Celadon Green-DK	866	340	825	324	742	292
3820	Straw-DK	347	136	331	130	298	117
3822	Straw-LT	630	248	600	236	540	212
3823	Yellow-UL Pale	2223	875	2117	833	1905	750
3824	Apricot-LT	8	3	8	3	7	2
3825	Pumpkin-Pale	21	8	20	7	18	7
3828	Hazelnut Brown	1690	665	1610	633	1449	570
3829	Old Gold-VY DK	85	33	81	31	73	28
3848	Teal Green-MD	37	14	35	13	31	12
3849	Teal Green-LT	17	6	17	6	15	5
3852	Straw-VY DK	74	29	71	27	64	25
3854	Autumn Gold-MD	65	25	62	24	56	22
3856	Mahogany-UL VY LT	255	100	243	95	218	85
3862	Mocha Beige-DK	798	314	760	299	684	269
3863	Mocha Beige-MD	1467	577	1397	550	1257	494
3864	Mocha Beige-LT	505	198	481	189	433	170
3865	Winter White	272	107	259	101	233	91
3866	Mocha Brown-UL VY LT	124	48	118	46	107	42

Extended thread usage table.							
DMC	Name	Usage (cm)	Usage (inch)	Usage (cm)	Usage (inch)	Usage (cm)	Usage (inch)
		10		12		24	
307	Lemon	97	38	81	32	41	16
310	Black	2583	1015	2153	846	1076	423
352	Coral-LT	11	4	9	3	5	2
353	Peach	29	11	24	9	12	5
356	Terra Cotta-MD	133	52	111	44	56	22
369	Pistachio Green-VY LT	283	110	236	92	118	46
370	Mustard-MD	4466	1757	3722	1464	1861	732
371	Mustard	711	279	593	233	296	116
420	Hazelnut Brown-DK	1165	457	971	381	485	191
435	Brown-VY LT	752	295	627	246	314	123
437	Tan-LT	1366	536	1139	447	569	224
444	Lemon-DK	36	13	30	11	15	5
445	Lemon-LT	295	115	246	96	123	48
471	Avocado Green-VY LT	254	99	212	83	106	41
501	Blue Green-DK	3055	1202	2546	1002	1273	501



502	Blue Green	432	169	360	141	180	71
503	Blue Green-MD	79	31	66	26	33	13
522	Fern Green	1591	626	1326	522	663	261
523	Fern Green-LT	79	31	66	26	33	13
524	Fern Green-VY LT	1141	448	951	374	476	187
543	Beige Brown-UL VY LT	810	319	675	266	338	133
611	Drab Brown	2441	959	2034	800	1017	400
612	Drab Brown-LT	6932	2729	5777	2274	2888	1137
613	Drab Brown-VY LT	2435	958	2030	798	1015	399
640	Beige Gray-VY DK	590	232	492	194	246	97
642	Beige Gray-DK	1654	650	1379	542	689	271
644	Beige Gray-MD	130	50	108	42	54	21
677	Old Gold-VY LT	2851	1121	2376	935	1188	467
680	Old Gold-DK	40	14	33	12	17	6
725	Topaz	54	20	45	17	23	8
727	Topaz-VY LT	518	203	432	170	216	85
732	Olive Green	155	59	129	50	65	25
733	Olive Green-MD	110	43	92	36	46	18
734	Olive Green-LT	650	256	542	213	271	107
738	Tan-VY LT	3409	1341	2841	1118	1421	559
739	Tan-UL VY LT	1316	517	1097	431	548	215
743	Yellow-MD	232	90	194	75	97	38
744	Yellow-Pale	571	223	476	186	238	93
746	Off White	801	315	668	263	334	131
780	Topaz-UL VY DK	50	20	42	17	21	8
783	Topaz-MD	58	22	48	18	24	9
822	Beige Gray-LT	103	40	86	33	43	17
823	Navy Blue-DK	815	320	680	267	340	134
830	Golden Olive-DK	1163	457	969	381	485	191
832	Golden Olive	83	32	69	27	35	14
833	Golden Olive-LT	187	72	156	60	78	30
834	Golden Olive-VY LT	1498	589	1248	491	624	245
838	Beige Brown-VY DK	252	99	210	83	105	41
839	Beige Brown-DK	1084	427	903	356	452	178
841	Beige Brown-LT	828	326	690	272	345	136
869	Hazelnut Brown-VY DK	124	49	104	41	52	20
895	Hunter Green-VY DK	1040	409	867	341	434	170
924	Gray Green--VY DK	3019	1188	2516	990	1258	495
926	Gray Green-MD	164	63	137	53	68	26
927	Gray Green-LT	63	23	53	20	26	10
937	Avocado Green-MD	279	110	233	92	116	46
938	Coffee Brown-UL DK	866	340	722	284	361	142
3013	Khaki Green-LT	4442	1748	3702	1457	1851	728
3021	Brown Gray-VY DK	515	202	429	168	215	84
3024	Brown Gray-VY LT	16	5	14	5	7	2
3045	Yellow Beige-DK	2696	1060	2247	884	1124	442
3046	Yellow Beige-MD	2185	859	1821	716	911	358
3052	Green Gray-MD	1548	608	1290	507	645	254
3053	Green Gray	938	369	782	308	391	154
3078	Golden Yellow-VY LT	738	290	615	242	308	121
3346	Hunter Green	877	344	731	287	365	143
3740	Antique Violet-DK	38	14	32	12	16	6
3768	Gray Green-DK	916	360	764	300	382	150
3770	Tawny-VY LT	922	362	768	302	384	151
3778	Terra Cotta-LT	430	169	359	141	179	71
3781	Mocha Brown-DK	279	110	233	92	116	46
3787	Brown Gray-DK	1512	594	1260	495	630	248
3799	Pewter Gray-VY DK	1246	490	1038	408	519	204
3815	Celadon Green-DK	1336	526	1113	438	557	219

Copyright ( c ) 2007-, Golden Kite (Golden K.)

Internet: [www.goldenkite.com](http://www.goldenkite.com)

e-mail: [info@goldenkite.com](mailto:info@goldenkite.com)

3820	Straw-DK	536	211	447	176	224	88
3822	Straw-LT	972	382	810	318	405	159
3823	Yellow-UL Pale	3429	1350	2858	1125	1429	563
3824	Apricot-LT	13	4	11	3	5	2
3825	Pumpkin-Pale	32	13	27	11	14	5
3828	Hazelnut Brown	2608	1026	2174	855	1087	428
3829	Old Gold-VY DK	131	50	110	42	55	21
3848	Teal Green-MD	56	22	47	18	23	9
3849	Teal Green-LT	27	9	23	8	11	4
3852	Straw-VY DK	115	45	96	38	48	19
3854	Autumn Gold-MD	101	40	84	33	42	17
3856	Mahogany-UL VY LT	392	153	327	128	164	64
3862	Mocha Beige-DK	1231	484	1026	404	513	202
3863	Mocha Beige-MD	2263	889	1886	741	943	371
3864	Mocha Beige-LT	779	306	650	255	325	128
3865	Winter White	419	164	350	137	175	68
3866	Mocha Brown-UL VY LT	193	76	161	63	80	32

Extended thread usage table.							
DMC	Name	Usage (cm)	Usage (inch)	Usage (cm)	Usage (inch)	Usage (cm)	Usage (inch)
		25		26		27	
307	Lemon	39	15	37	15	36	14
310	Black	1033	406	993	390	957	376
352	Coral-LT	4	1	4	1	4	1
353	Peach	12	4	11	4	11	4
356	Terra Cotta-MD	53	21	51	20	49	19
369	Pistachio Green-VY LT	113	44	109	42	105	41
370	Mustard-MD	1786	703	1718	676	1654	651
371	Mustard	284	112	273	107	263	103
420	Hazelnut Brown-DK	466	183	448	176	431	169
435	Brown-VY LT	301	118	289	114	279	109
437	Tan-LT	546	215	525	206	506	199
444	Lemon-DK	14	5	14	5	13	5
445	Lemon-LT	118	46	114	44	109	43
471	Avocado Green-VY LT	102	40	98	38	94	37
501	Blue Green-DK	1222	481	1175	462	1131	445
502	Blue Green	173	68	166	65	160	63
503	Blue Green-MD	32	12	30	12	29	11
522	Fern Green	636	251	612	241	589	232
523	Fern Green-LT	32	12	30	12	29	11
524	Fern Green-VY LT	456	179	439	172	423	166
543	Beige Brown-UL VY LT	324	127	312	123	300	118
611	Drab Brown	976	384	939	369	904	355
612	Drab Brown-LT	2773	1092	2666	1050	2567	1011
613	Drab Brown-VY LT	974	383	937	368	902	355
640	Beige Gray-VY DK	236	93	227	89	219	86
642	Beige Gray-DK	662	260	636	250	613	241
644	Beige Gray-MD	52	20	50	19	48	19
677	Old Gold-VY LT	1140	449	1097	431	1056	415
680	Old Gold-DK	16	6	15	6	15	5
725	Topaz	22	8	21	8	20	7
727	Topaz-VY LT	207	81	199	78	192	75
732	Olive Green	62	24	60	23	57	22
733	Olive Green-MD	44	17	42	17	41	16
734	Olive Green-LT	260	102	250	98	241	95
738	Tan-VY LT	1364	536	1311	516	1263	497

739	Tan-UL VY LT	526	207	506	199	487	191
743	Yellow-MD	93	36	89	35	86	33
744	Yellow-Pale	228	89	219	86	211	83
746	Off White	320	126	308	121	297	117
780	Topaz-UL VY DK	20	8	19	8	19	7
783	Topaz-MD	23	9	22	8	21	8
822	Beige Gray-LT	41	16	39	15	38	15
823	Navy Blue-DK	326	128	314	123	302	119
830	Golden Olive-DK	465	183	447	176	431	169
832	Golden Olive	33	13	32	12	31	12
833	Golden Olive-LT	75	29	72	28	69	27
834	Golden Olive-VY LT	599	235	576	226	555	218
838	Beige Brown-VY DK	101	40	97	38	93	37
839	Beige Brown-DK	433	171	417	164	401	158
841	Beige Brown-LT	331	130	318	125	307	121
869	Hazelnut Brown-VY DK	50	19	48	19	46	18
895	Hunter Green-VY DK	416	163	400	157	385	151
924	Gray Green--VY DK	1207	475	1161	457	1118	440
926	Gray Green-MD	66	25	63	24	61	23
927	Gray Green-LT	25	9	24	9	23	9
937	Avocado Green-MD	112	44	107	42	103	41
938	Coffee Brown-UL DK	346	136	333	131	321	126
3013	Khaki Green-LT	1777	699	1709	672	1645	647
3021	Brown Gray-VY DK	206	81	198	78	191	75
3024	Brown Gray-VY LT	6	2	6	2	6	2
3045	Yellow Beige-DK	1079	424	1037	408	999	393
3046	Yellow Beige-MD	874	343	840	330	809	318
3052	Green Gray-MD	619	243	595	234	573	225
3053	Green Gray	375	148	361	142	347	137
3078	Golden Yellow-VY LT	295	116	284	111	273	107
3346	Hunter Green	351	138	337	132	325	127
3740	Antique Violet-DK	15	6	15	6	14	5
3768	Gray Green-DK	366	144	352	138	339	133
3770	Tawny-VY LT	369	145	354	139	341	134
3778	Terra Cotta-LT	172	68	165	65	159	63
3781	Mocha Brown-DK	112	44	107	42	103	41
3787	Brown Gray-DK	605	238	582	228	560	220
3799	Pewter Gray-VY DK	498	196	479	188	461	181
3815	Celadon Green-DK	534	210	514	202	495	195
3820	Straw-DK	215	84	206	81	199	78
3822	Straw-LT	389	153	374	147	360	141
3823	Yellow-UL Pale	1372	540	1319	519	1270	500
3824	Apricot-LT	5	1	5	1	5	1
3825	Pumpkin-Pale	13	5	12	5	12	5
3828	Hazelnut Brown	1043	410	1003	395	966	380
3829	Old Gold-VY DK	53	20	51	19	49	19
3848	Teal Green-MD	22	9	21	8	21	8
3849	Teal Green-LT	11	4	10	3	10	3
3852	Straw-VY DK	46	18	44	17	43	17
3854	Autumn Gold-MD	40	16	39	15	37	15
3856	Mahogany-UL VY LT	157	61	151	59	145	57
3862	Mocha Beige-DK	492	194	474	186	456	179
3863	Mocha Beige-MD	905	356	870	342	838	329
3864	Mocha Beige-LT	312	122	300	118	289	113
3865	Winter White	168	66	161	63	155	61
3866	Mocha Brown-UL VY LT	77	30	74	29	71	28

Extended thread usage table.							
DMC	Name	Usage (cm)	Usage (inch)	Usage (cm)	Usage (inch)	Usage (cm)	Usage (inch)
		28		30		32	
307	Lemon	35	14	32	13	30	12
310	Black	923	363	861	338	807	317
352	Coral-LT	4	1	4	1	3	1
353	Peach	10	4	10	4	9	3
356	Terra Cotta-MD	48	19	44	17	42	16
369	Pistachio Green-VY LT	101	39	94	37	88	34
370	Mustard-MD	1595	627	1489	586	1396	549
371	Mustard	254	100	237	93	222	87
420	Hazelnut Brown-DK	416	163	388	152	364	143
435	Brown-VY LT	269	105	251	98	235	92
437	Tan-LT	488	192	455	179	427	168
444	Lemon-DK	13	5	12	4	11	4
445	Lemon-LT	105	41	98	38	92	36
471	Avocado Green-VY LT	91	35	85	33	79	31
501	Blue Green-DK	1091	429	1018	401	955	376
502	Blue Green	154	60	144	56	135	53
503	Blue Green-MD	28	11	26	10	25	10
522	Fern Green	568	224	530	209	497	196
523	Fern Green-LT	28	11	26	10	25	10
524	Fern Green-VY LT	408	160	380	149	357	140
543	Beige Brown-UL VY LT	289	114	270	106	253	100
611	Drab Brown	872	343	814	320	763	300
612	Drab Brown-LT	2476	975	2311	910	2166	853
613	Drab Brown-VY LT	870	342	812	319	761	299
640	Beige Gray-VY DK	211	83	197	77	185	73
642	Beige Gray-DK	591	232	551	217	517	203
644	Beige Gray-MD	46	18	43	17	41	16
677	Old Gold-VY LT	1018	401	950	374	891	350
680	Old Gold-DK	14	5	13	5	12	5
725	Topaz	19	7	18	7	17	6
727	Topaz-VY LT	185	73	173	68	162	64
732	Olive Green	55	21	52	20	48	19
733	Olive Green-MD	39	15	37	14	34	14
734	Olive Green-LT	232	91	217	85	203	80
738	Tan-VY LT	1218	479	1136	447	1065	419
739	Tan-UL VY LT	470	185	439	172	411	161
743	Yellow-MD	83	32	77	30	73	28
744	Yellow-Pale	204	80	190	74	178	70
746	Off White	286	113	267	105	250	98
780	Topaz-UL VY DK	18	7	17	7	16	6
783	Topaz-MD	21	8	19	7	18	7
822	Beige Gray-LT	37	14	34	13	32	12
823	Navy Blue-DK	291	114	272	107	255	100
830	Golden Olive-DK	415	163	388	152	363	143
832	Golden Olive	30	12	28	11	26	10
833	Golden Olive-LT	67	26	62	24	59	23
834	Golden Olive-VY LT	535	210	499	196	468	184
838	Beige Brown-VY DK	90	35	84	33	79	31
839	Beige Brown-DK	387	152	361	142	339	133
841	Beige Brown-LT	296	116	276	109	259	102
869	Hazelnut Brown-VY DK	44	17	41	16	39	15
895	Hunter Green-VY DK	372	146	347	136	325	128
924	Gray Green--VY DK	1078	424	1006	396	943	371
926	Gray Green-MD	59	23	55	21	51	20

927	Gray Green-LT	23	8	21	8	20	7
937	Avocado Green-MD	100	39	93	37	87	34
938	Coffee Brown-UL DK	309	122	289	113	271	106
3013	Khaki Green-LT	1587	624	1481	583	1388	546
3021	Brown Gray-VY DK	184	72	172	67	161	63
3024	Brown Gray-VY LT	6	2	5	2	5	2
3045	Yellow Beige-DK	963	379	899	353	843	331
3046	Yellow Beige-MD	780	307	728	286	683	268
3052	Green Gray-MD	553	217	516	203	484	190
3053	Green Gray	335	132	313	123	293	115
3078	Golden Yellow-VY LT	264	104	246	97	231	91
3346	Hunter Green	313	123	292	115	274	107
3740	Antique Violet-DK	14	5	13	5	12	5
3768	Gray Green-DK	327	129	305	120	286	113
3770	Tawny-VY LT	329	129	307	121	288	113
3778	Terra Cotta-LT	154	60	143	56	134	53
3781	Mocha Brown-DK	100	39	93	37	87	34
3787	Brown Gray-DK	540	212	504	198	473	186
3799	Pewter Gray-VY DK	445	175	415	163	389	153
3815	Celadon Green-DK	477	188	445	175	417	164
3820	Straw-DK	192	75	179	70	168	66
3822	Straw-LT	347	136	324	127	304	119
3823	Yellow-UL Pale	1225	482	1143	450	1072	422
3824	Apricot-LT	5	1	4	1	4	1
3825	Pumpkin-Pale	12	5	11	4	10	4
3828	Hazelnut Brown	932	366	869	342	815	321
3829	Old Gold-VY DK	47	18	44	17	41	16
3848	Teal Green-MD	20	8	19	7	17	7
3849	Teal Green-LT	10	3	9	3	8	3
3852	Straw-VY DK	41	16	38	15	36	14
3854	Autumn Gold-MD	36	14	34	13	32	12
3856	Mahogany-UL VY LT	140	55	131	51	123	48
3862	Mocha Beige-DK	440	173	410	161	385	151
3863	Mocha Beige-MD	808	318	754	296	707	278
3864	Mocha Beige-LT	278	109	260	102	244	96
3865	Winter White	150	59	140	55	131	51
3866	Mocha Brown-UL VY LT	69	27	64	25	60	24

(11)



	60	70	80	90	100
10	...	...	...	...	...
20	...	...	...	...	...
30	...	...	...	...	...
40	...	...	...	...	...
50	...	...	...	...	...
60	...	...	...	...	...
70	...	...	...	...	...

$$(12) \quad \frac{d}{dt} \left( \frac{\partial L}{\partial \dot{x}} \right) = \frac{\partial L}{\partial x}$$

$$(13) \quad \frac{d}{dt} \left( \frac{\partial L}{\partial \dot{x}} \right) = \frac{\partial L}{\partial x}$$

	210	220	230	240	250	260
10	...	...	...	...	...	...
20	...	...	...	...	...	...
30	...	...	...	...	...	...
40	...	...	...	...	...	...
50	...	...	...	...	...	...
60	...	...	...	...	...	...
70	...	...	...	...	...	...

[illegible]

$$(16) \quad \mathcal{L}(\mathcal{A}) = \mathcal{L}(\mathcal{B}) \quad (17)$$



[illegible]

(18)

[illegible]

[illegible]

	110	120	130	140	150
80	...	...	...	...	...
90	...	...	...	...	...
100	...	...	...	...	...
110	...	...	...	...	...
120	...	...	...	...	...
130	...	...	...	...	...
140	...	...	...	...	...
150	...	...	...	...	...

	160	170	180	190	200	210
80	?	?	?	?	?	?
90	?	?	?	?	?	?
100	?	?	?	?	?	?
110	?	?	?	?	?	?
120	?	?	?	?	?	?
130	?	?	?	?	?	?
140	?	?	?	?	?	?
150	?	?	?	?	?	?



	210	220	230	240	250	260
80	...	...	...	...	...	...
90	...	...	...	...	...	...
100	...	...	...	...	...	...
110	...	...	...	...	...	...
120	...	...	...	...	...	...
130	...	...	...	...	...	...
140	...	...	...	...	...	...
150	...	...	...	...	...	...

	260	270	280	290	300	310
80	...	...	...	...	...	...
90	...	...	...	...	...	...
100	...	...	...	...	...	...
110	...	...	...	...	...	...
120	...	...	...	...	...	...
130	...	...	...	...	...	...
140	...	...	...	...	...	...
150	...	...	...	...	...	...

$$(25) \quad \mathcal{L}(\mathcal{A}) = \mathcal{L}(\mathcal{B}) \quad (26)$$

[illegible]

(27)

	10										20										30										40										50									
150																																																		
160																																																		
170																																																		
180																																																		
190																																																		
200																																																		
210																																																		
220																																																		

	60										70										80										90										100																																																											
150																																																																																																				
160																																																																																																				
170																																																																																																				
180																																																																																																				
190																																																																																																				
200																																																																																																				
210																																																																																																				
220																																																																																																				

	110	120	130	140	150
150					
160					
170					
180					
190					
200					
210					
220					



	160	170	180	190	200	210
150	<div> </div>	<div> </div>	<div> </div>	<div> </div>	<div> </div>	<div> </div>
160	<div> </div>	<div> </div>	<div> </div>	<div> </div>	<div> </div>	<div> </div>
170	<div> </div>	<div> </div>	<div> </div>	<div> </div>	<div> </div>	<div> </div>
180	<div> </div>	<div> </div>	<div> </div>	<div> </div>	<div> </div>	<div> </div>
190	<div> </div>	<div> </div>	<div> </div>	<div> </div>	<div> </div>	<div> </div>
200	<div> </div>	<div> </div>	<div> </div>	<div> </div>	<div> </div>	<div> </div>
210	<div> </div>	<div> </div>	<div> </div>	<div> </div>	<div> </div>	<div> </div>
220	<div> </div>	<div> </div>	<div> </div>	<div> </div>	<div> </div>	<div> </div>

[illegible]

[illegible]

[illegible]

	370										380										390										400										410									
150																																																		
160																																																		
170																																																		
180																																																		
190																																																		

	420	430	440	450
150	...	...	...	...
160	...	...	...	...
170	...	...	...	...
180	...	...	...	...
190	...	...	...	...
200	...	...	...	...
210	...	...	...	...
220	...	...	...	...

[illegible]

[illegible]



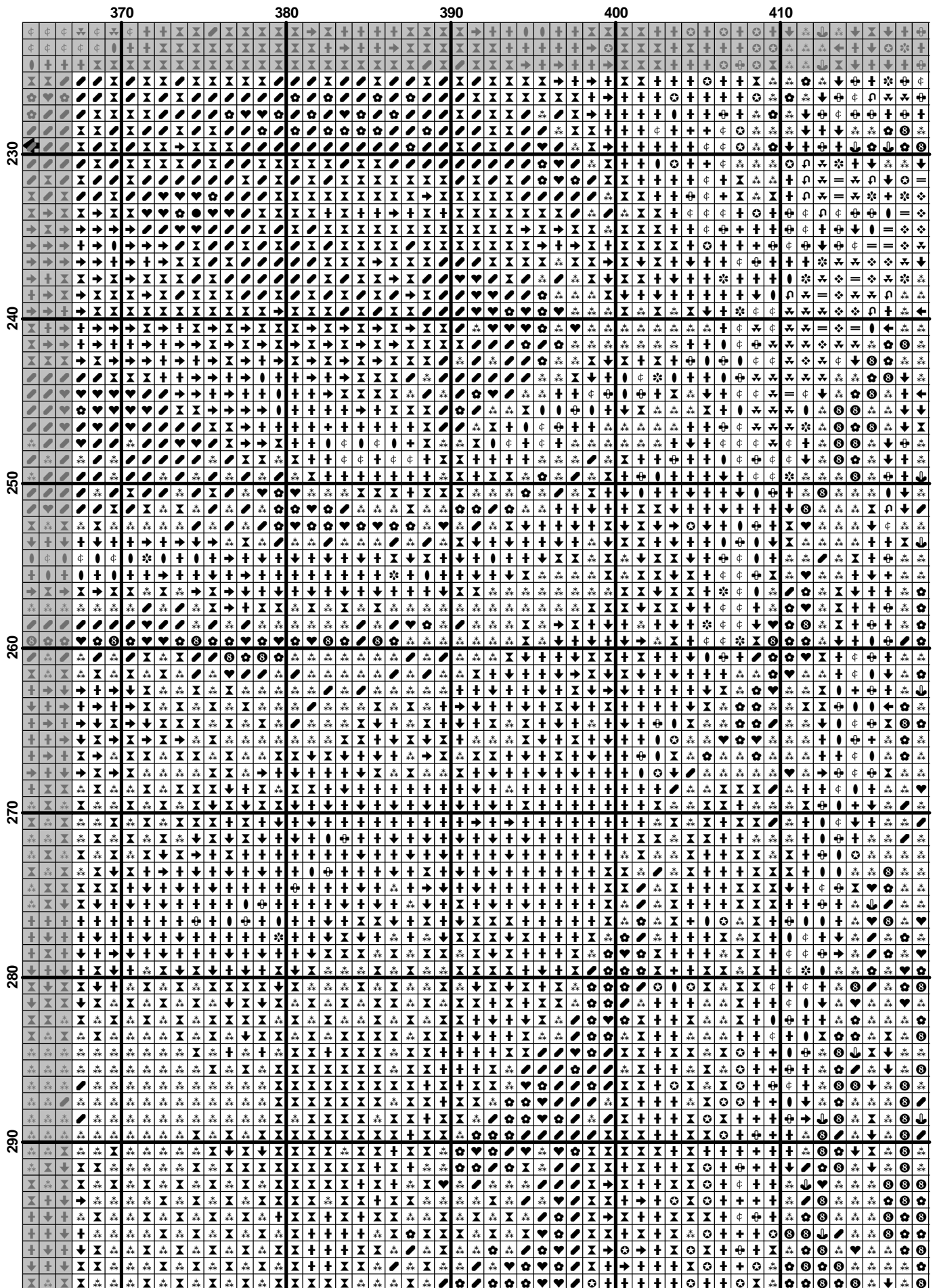
	110	120	130	140	150
230	...	...	...	...	...
240	...	...	...	...	...
250	...	...	...	...	...
260	...	...	...	...	...
270	...	...	...	...	...
280	...	...	...	...	...
290	...	...	...	...	...

	160	170	180	190	200	210
230	230	230	230	230	230	230
240	240	240	240	240	240	240
250	250	250	250	250	250	250
260	260	260	260	260	260	260
270	270	270	270	270	270	270
280	280	280	280	280	280	280
290	290	290	290	290	290	290

[illegible]

	260	270	280	290	300	310
230						
240						
250						
260						
270						
280						
290						

$$(43) \quad \mathcal{L}(\mathcal{A}) = \mathcal{L}(\mathcal{B}) \quad (44)$$



(45)

[illegible]



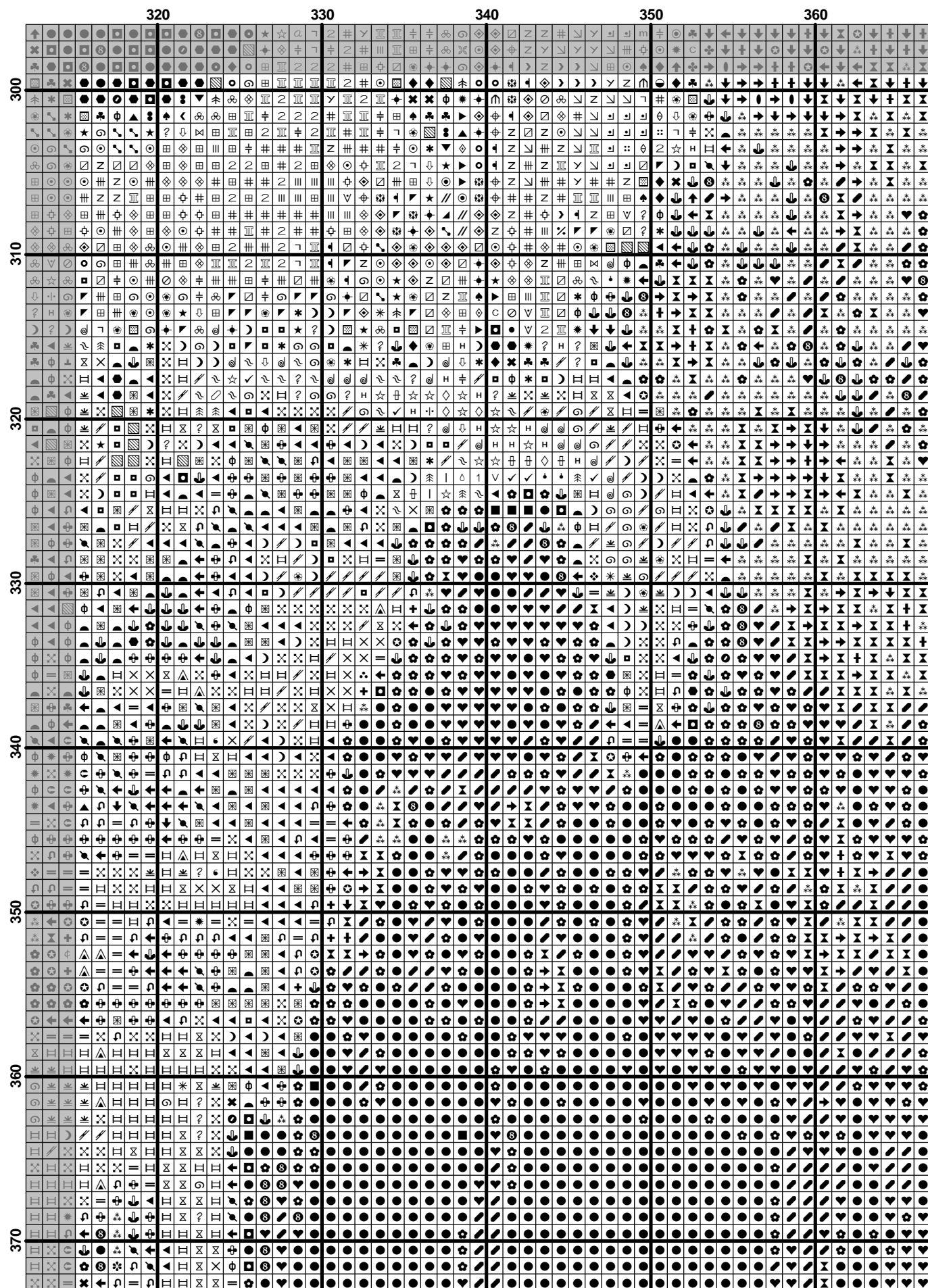
	60						70						80						90						100					
300																														
310																														
320																														

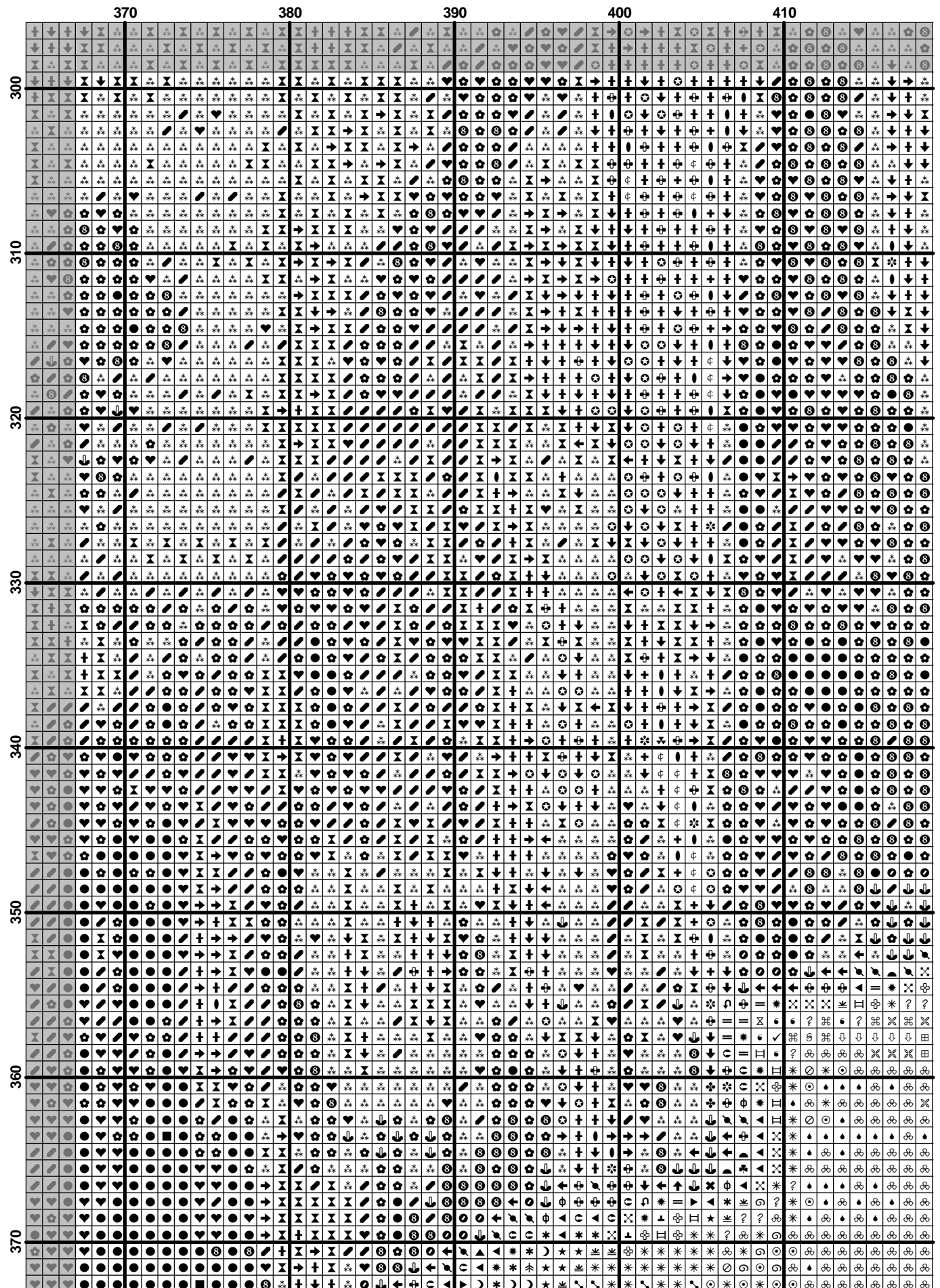
[illegible]

[illegible]

[illegible]

	260	270	280	290	300	310
300	...	...	...	...	...	...
310	...	...	...	...	...	...
320	...	...	...	...	...	...
330	...	...	...	...	...	...
340	...	...	...	...	...	...
350	...	...	...	...	...	...
360	...	...	...	...	...	...
370	...	...	...	...	...	...

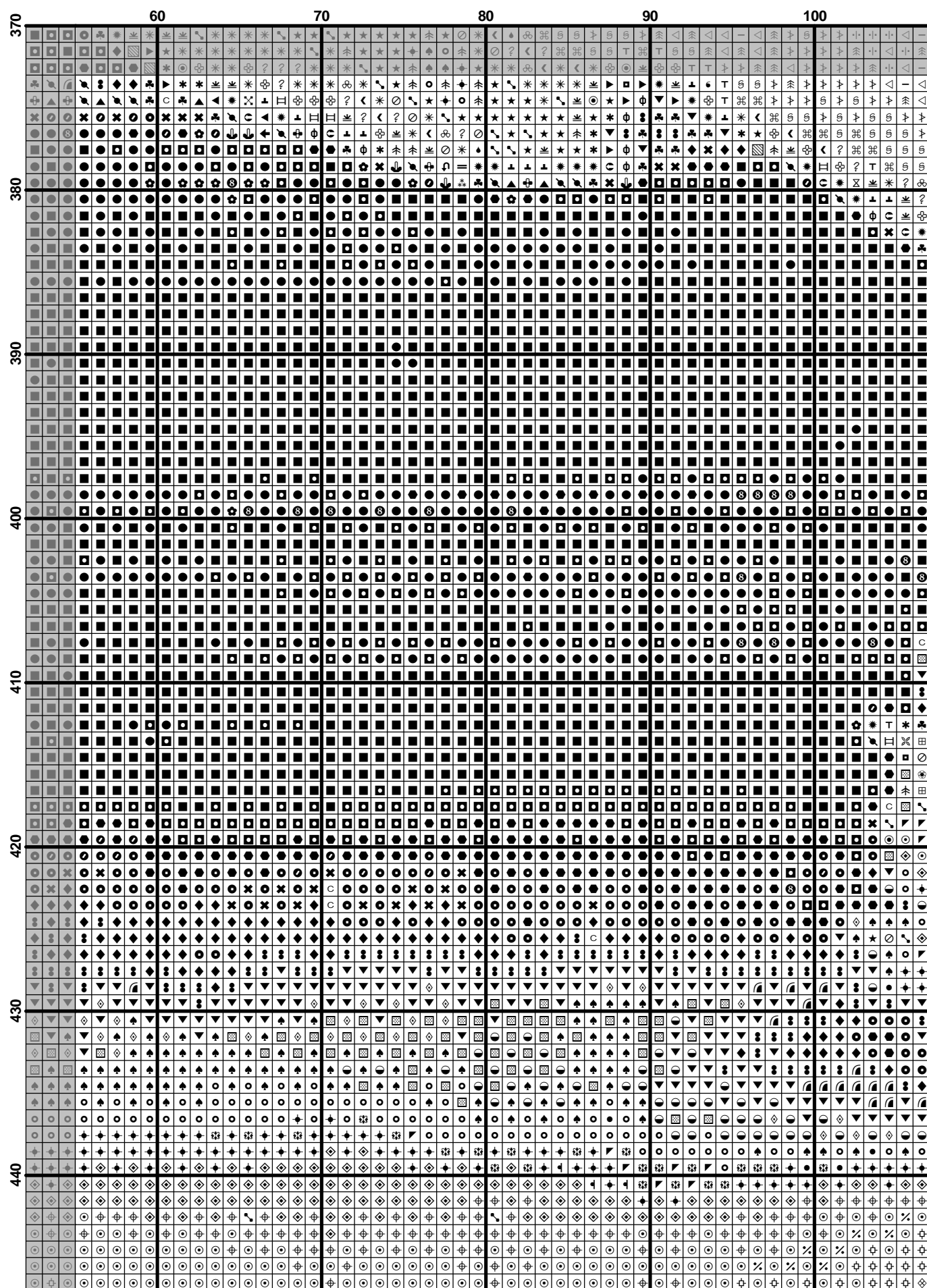




	420										430										440										450									
300																																								
310																																								
320																																								
330																																								
340																																								



(56)

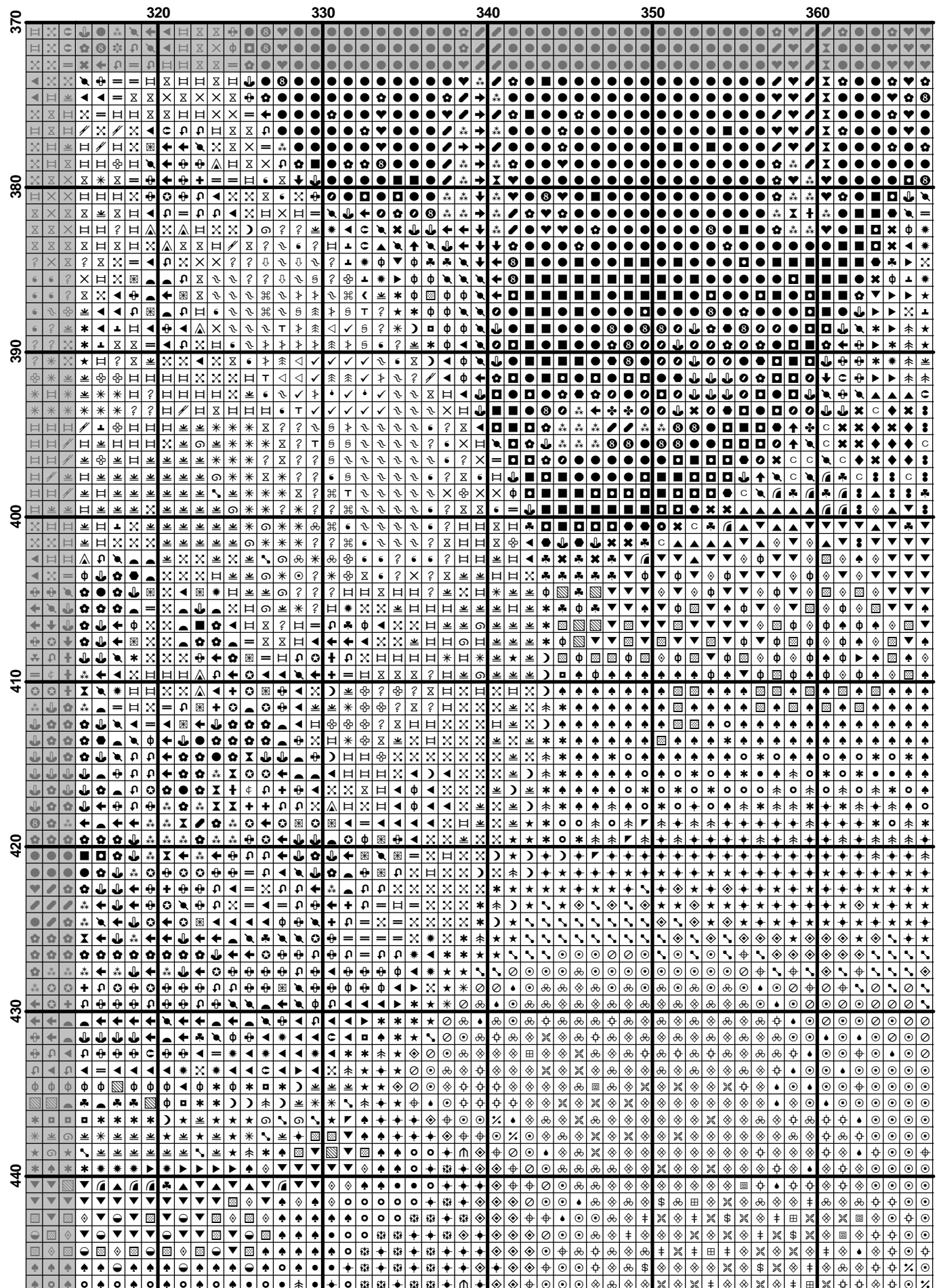


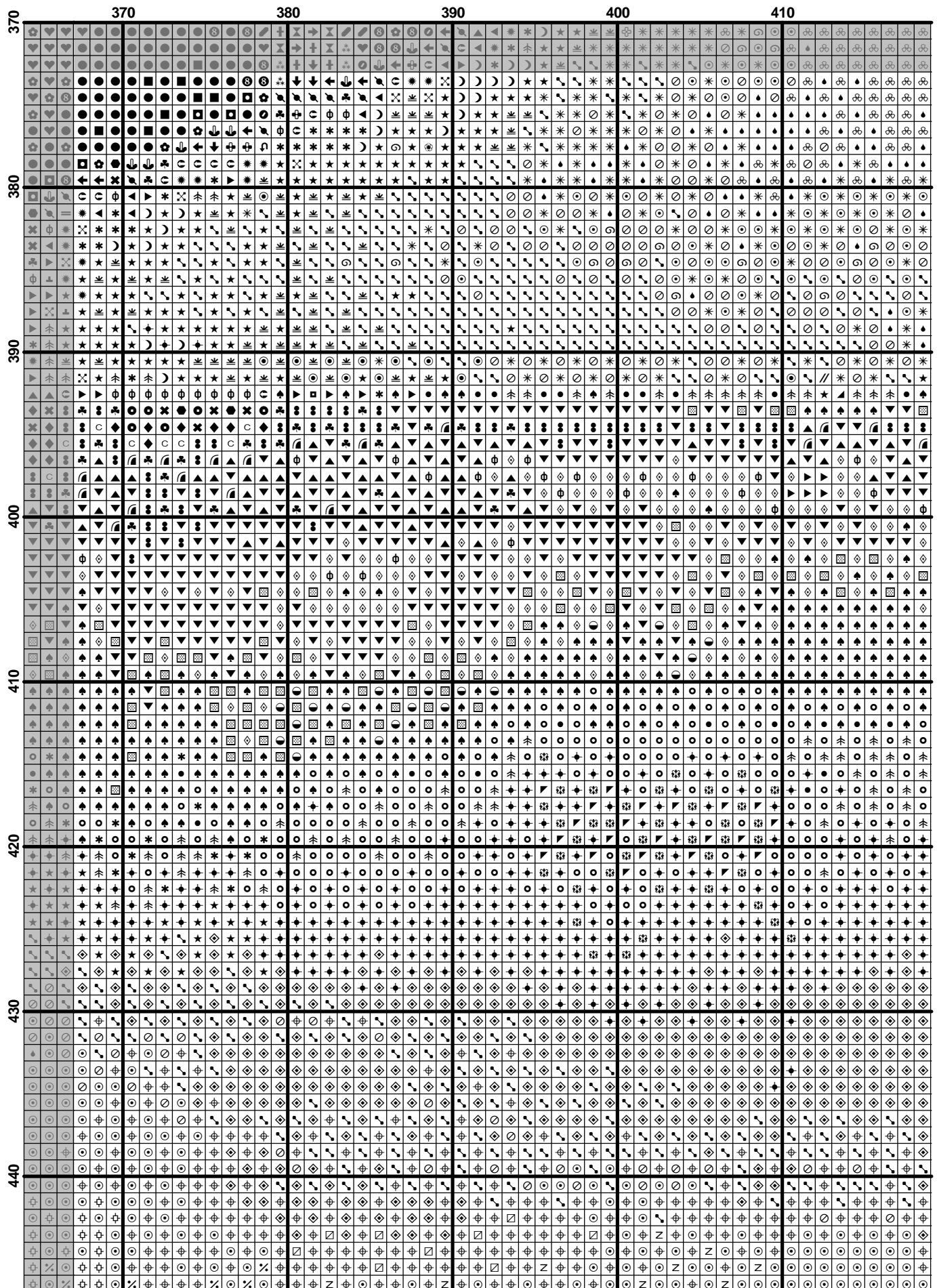
	110	120	130	140	150
370					
380					
390					
400					
410					
420					
430					
440					

	160	170	180	190	200	210
370	...	...	...	...	...	...
380	...	...	...	...	...	...
390	...	...	...	...	...	...
400	...	...	...	...	...	...
410	...	...	...	...	...	...
420	...	...	...	...	...	...
430	...	...	...	...	...	...
440	...	...	...	...	...	...

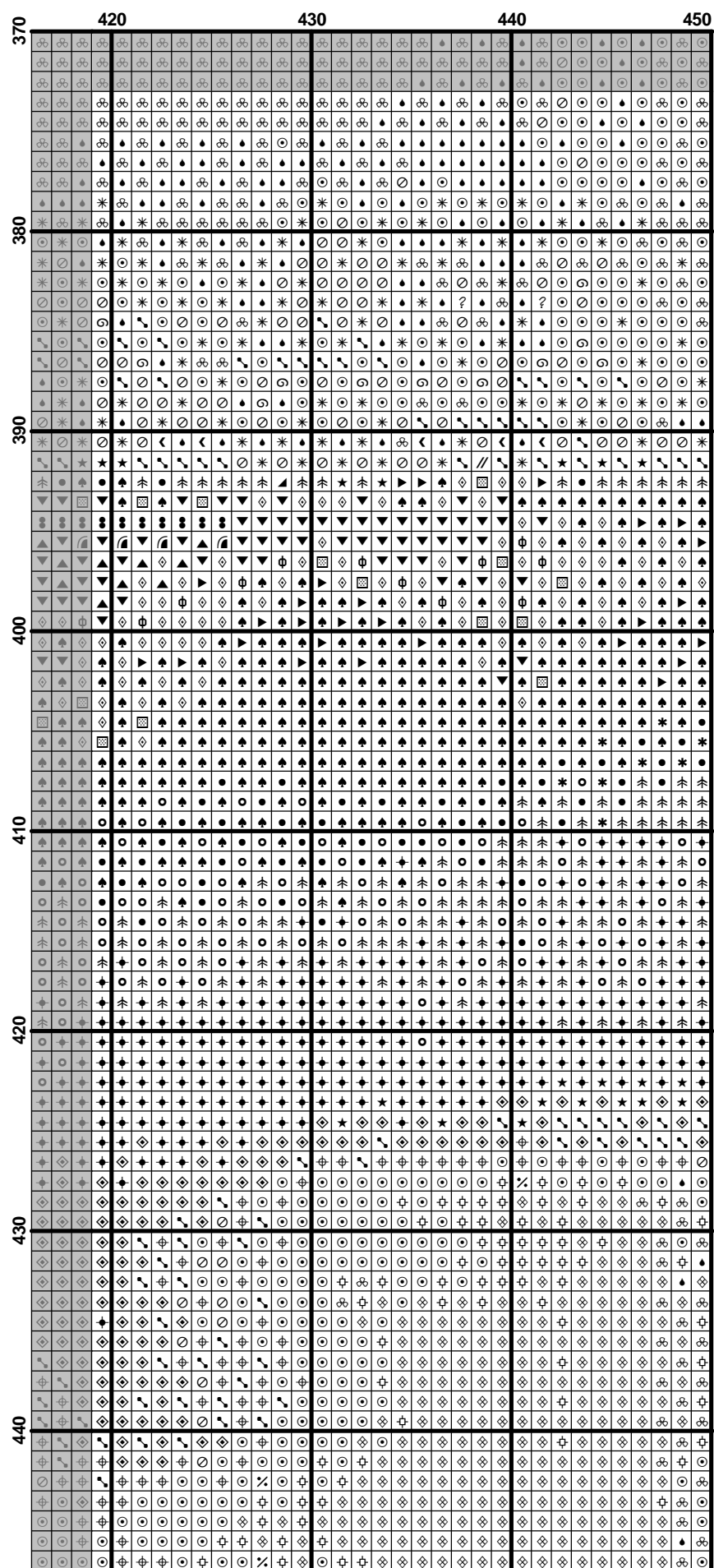
	210	220	230	240	250	260
370	...	...	...	...	...	...
380	...	...	...	...	...	...
390	...	...	...	...	...	...
400	...	...	...	...	...	...
410	...	...	...	...	...	...
420	...	...	...	...	...	...
430	...	...	...	...	...	...
440	...	...	...	...	...	...

	260	270	280	290	300	310
370	?	?	?	?	?	?
380	?	?	?	?	?	?
390	?	?	?	?	?	?
400	?	?	?	?	?	?
410	?	?	?	?	?	?
420	?	?	?	?	?	?
430	?	?	?	?	?	?
440	?	?	?	?	?	?









[illegible]

[illegible]

[illegible]

[illegible]

[illegible]

[illegible]

	320										330										340										350										360									
450																																																		



[illegible]

